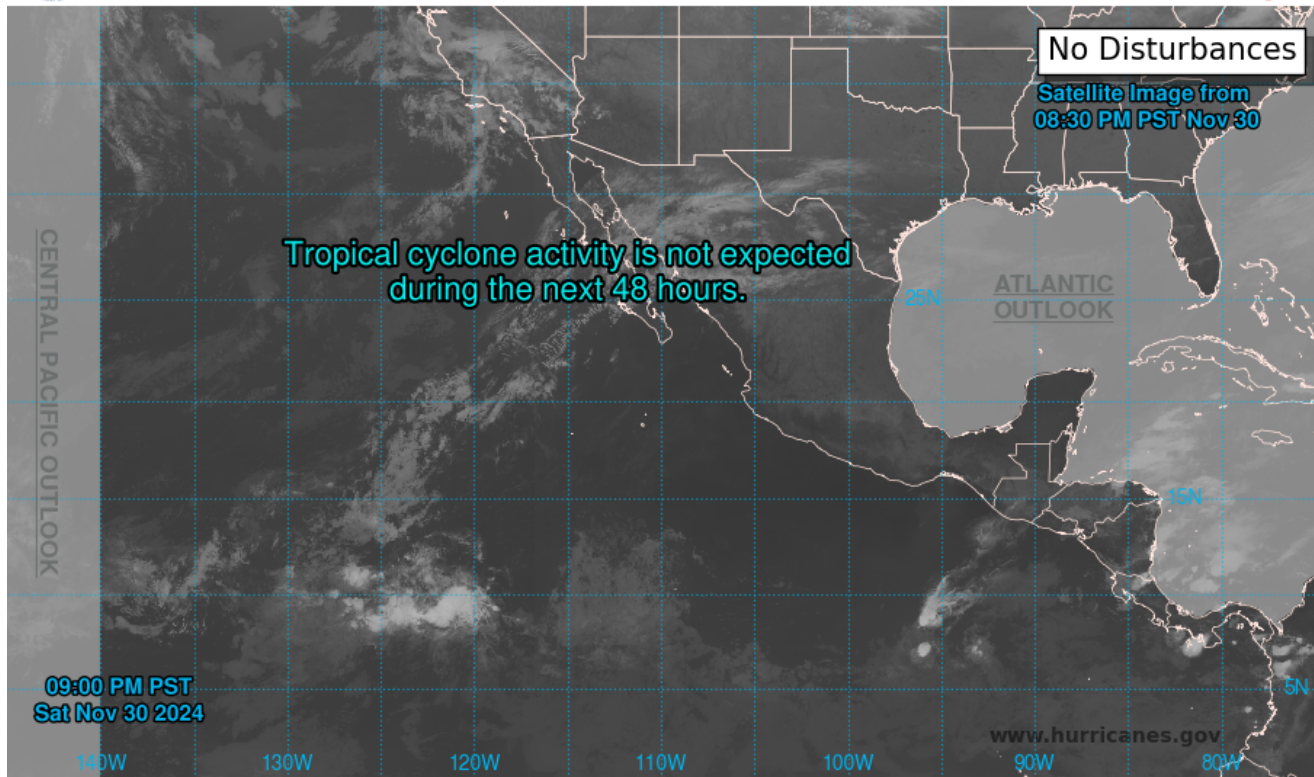




Two-Day Graphical Tropical Weather Outlook

National Hurricane Center Miami, Florida



Current Disturbances and Two-Day Cyclone Formation Chance: ✘ < 40% ✘ 40-60% ✘ > 60%
 Tropical or Sub-Tropical Cyclone: ○ Depression ⦿ Storm ⦿ Hurricane
⊗ Post-Tropical Cyclone or Remnants



Seven-Day Graphical Tropical Weather Outlook

National Hurricane Center Miami, Florida



Current Disturbances and Seven-Day Cyclone Formation Chance: ✘ < 40% ✘ 40-60% ✘ > 60%
 Tropical or Sub-Tropical Cyclone: ○ Depression ⦿ Storm ⦿ Hurricane
⊗ Post-Tropical Cyclone or Remnants

Tropical Weather Outlook
NWS National Hurricane Center Miami FL
1000 PM PST Sat Nov 30 2024

For the eastern North Pacific...east of 140 degrees west longitude:

Tropical cyclone formation is not expected during the next 7 days.

This is the last regularly scheduled Tropical Weather Outlook of the 2024 eastern North Pacific Hurricane Season. Routine issuance of the Tropical Weather Outlook will resume on May 15, 2025. During the off-season, Special Tropical Weather Outlooks will be issued as conditions warrant.

Tropical Weather Discussion
NWS National Hurricane Center Miami FL
0405 UTC Sun Dec 1 2024

Tropical Weather Discussion for the eastern Pacific Ocean from 03.4S to 30N, east of 120W including the Gulf of California, and from the Equator to 30N, between 120W and 140W. The following information is based on satellite imagery, weather observations, radar, and meteorological analysis.

Based on 0000 UTC surface analysis and satellite imagery through 0230 UTC.

...SPECIAL FEATURES...

Gulf of Tehuantepec Gale Warning: Strong winds and rough seas will prevail in the Gulf of Tehuantepec through Sun as high pressure settles into the western Gulf of Mexico. Gales are likely to develop Sun night and Mon as another cold front and stronger high pressure move S into the Gulf of Mexico. These gales and associated very rough seas may prevail through mid-week. Please read the latest High Seas Forecast issued by the National Hurricane Center at the website - <https://www.nhc.noaa.gov/text/MIAHSFEP2.shtml> for details.

...INTERTROPICAL CONVERGENCE ZONE/MONSOON TROUGH...

The monsoon trough extends from near 10N85W to 06N98W. The ITCZ continues from 06N98W to 12N127W, and resumes near 12N131W to beyond 10N140W. A 1011 mb low is centered near 13N129W. Scattered moderate to isolated strong convection is occurring from 09N to 14N between 120W and 129W.

...OFFSHORE WATERS WITHIN 250 NM OF MEXICO...

See Special Features section above for information on gale-force gap winds in the Gulf of Tehuantepec.

Moderate to locally fresh NW winds prevail in the Gulf of California, supported by the pressure gradient between a trough analyzed over northwestern Mexico and a 1019 mb high centered near 29N121W. Weak ridging prevails across the remainder of the Mexico offshore waters, supporting light to gentle winds and moderate seas.

For the forecast, aside from the Tehuantepec gales, moderate NW winds will also prevail in the Gulf of California early this week. Otherwise, gentle to moderate winds and moderate seas will prevail across the rest of the Mexico offshore waters through mid-week as high pressure builds in the eastern Pacific.

...OFFSHORE WATERS WITHIN 250 NM OF CENTRAL AMERICA, COLOMBIA,
AND WITHIN 750 NM OF ECUADOR...

Fresh NE winds are occurring in the Gulf of Papagayo. Otherwise, gentle to locally moderate NE winds and seas of 3 to 5 ft prevail north of the monsoon trough, with gentle to locally moderate moderate winds and seas of 3 to 5 ft occurring to the south of the trough.

For the forecast, fresh NE winds will pulse in the Gulf of Papagayo this weekend, then increase to strong Mon as the pressure gradient between low pressure in the south-central Caribbean and building high pressure in the Gulf of Mexico tightens. These strong winds will continue to pulse through at least mid-week. Rough seas induced by strong winds in the Gulf of Tehuantepec will enter waters well offshore Guatemala tonight, diminish Sun, then increase again Sun night as gales develop to the north. Otherwise, gentle to locally moderate S to SW winds and moderate seas will occur south of the monsoon trough through then week, with gentle to locally moderate NE winds and moderate seas occurring north of the trough.

...REMAINDER OF THE AREA...

A surface trough that was entering the far NW waters has lifted N of the region. Weak ridging prevails north of the ITCZ, supporting gentle to locally moderate winds north of 18N. South of 18N to the ITCZ, moderate to locally fresh E to NE trade winds and seas of 5 to 7 ft are noted. South of the ITCZ, moderate to fresh SE winds and seas of 5 to 7 ft prevail.

For the forecast, building high pressure over the eastern Pacific will support light to gentle winds and moderate seas north of 20N through the week. A tradewind regime will prevail south of 20N, with moderate to locally fresh trade winds occurring west of 110W through the middle of the week. Long-period NW swell north of 20N and west of 135W will expand rough seas to areas north of 05N and west of 125W Sun into early next week. Seas will peak near 10 ft in the far NW waters.