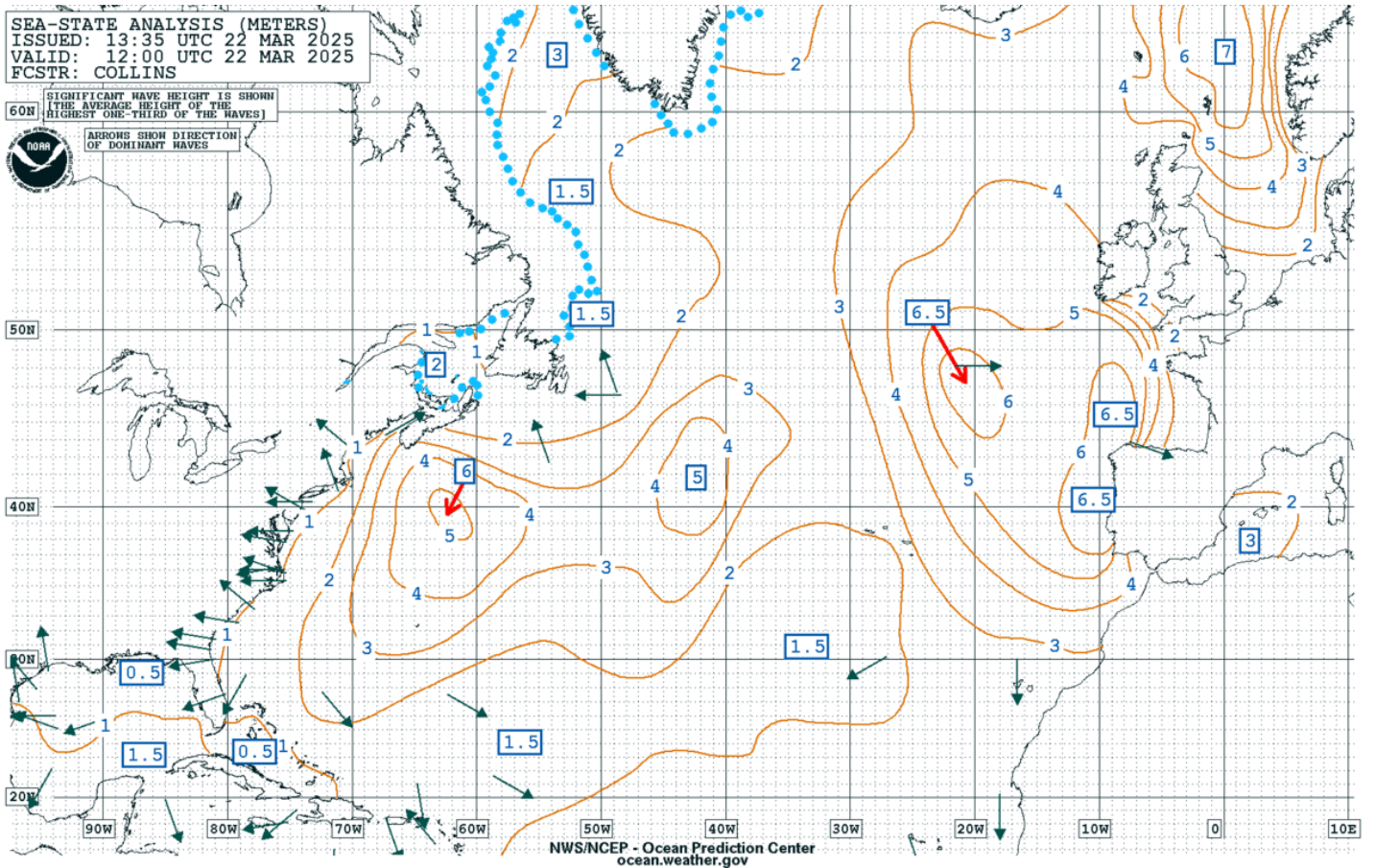
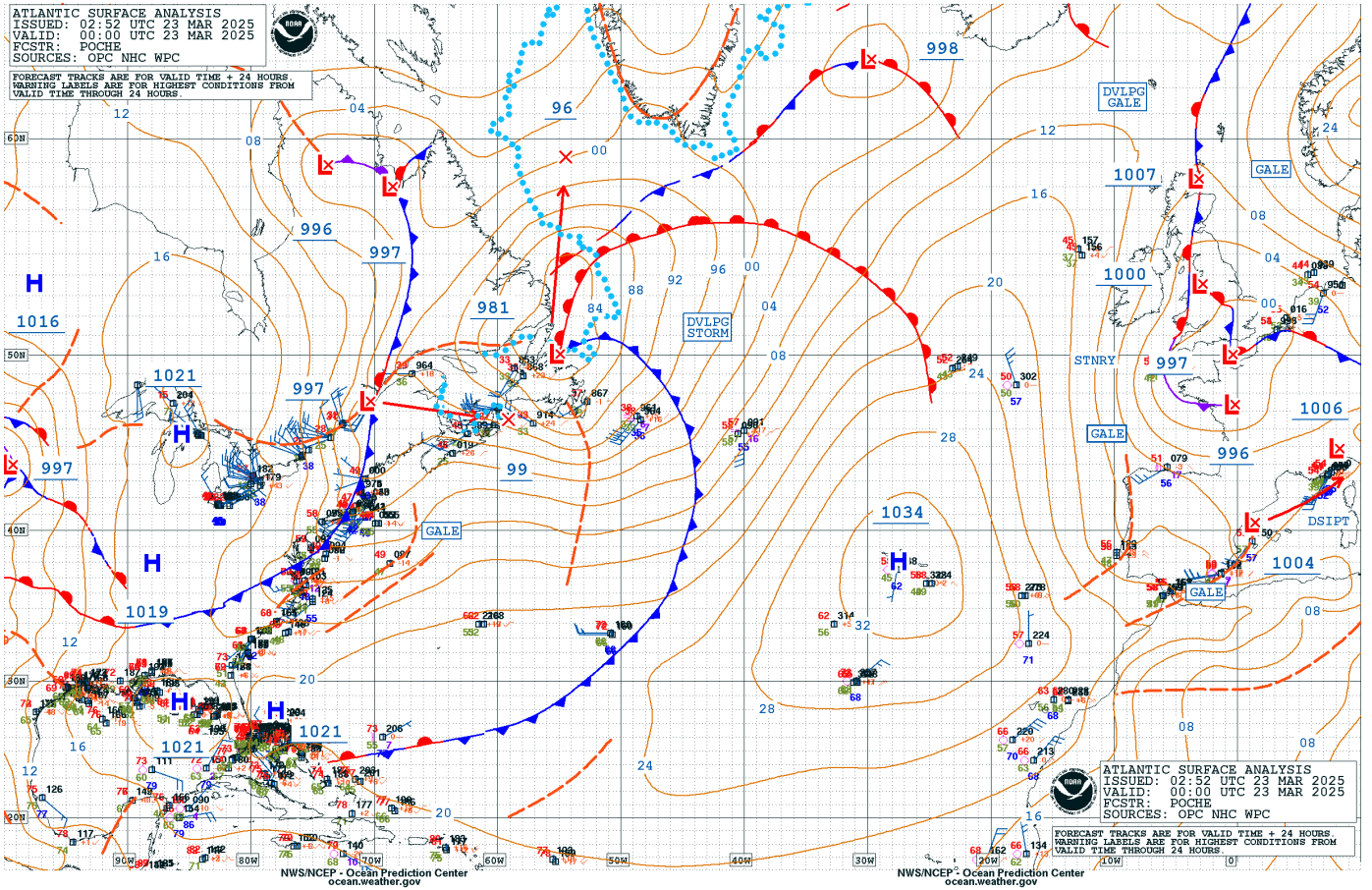
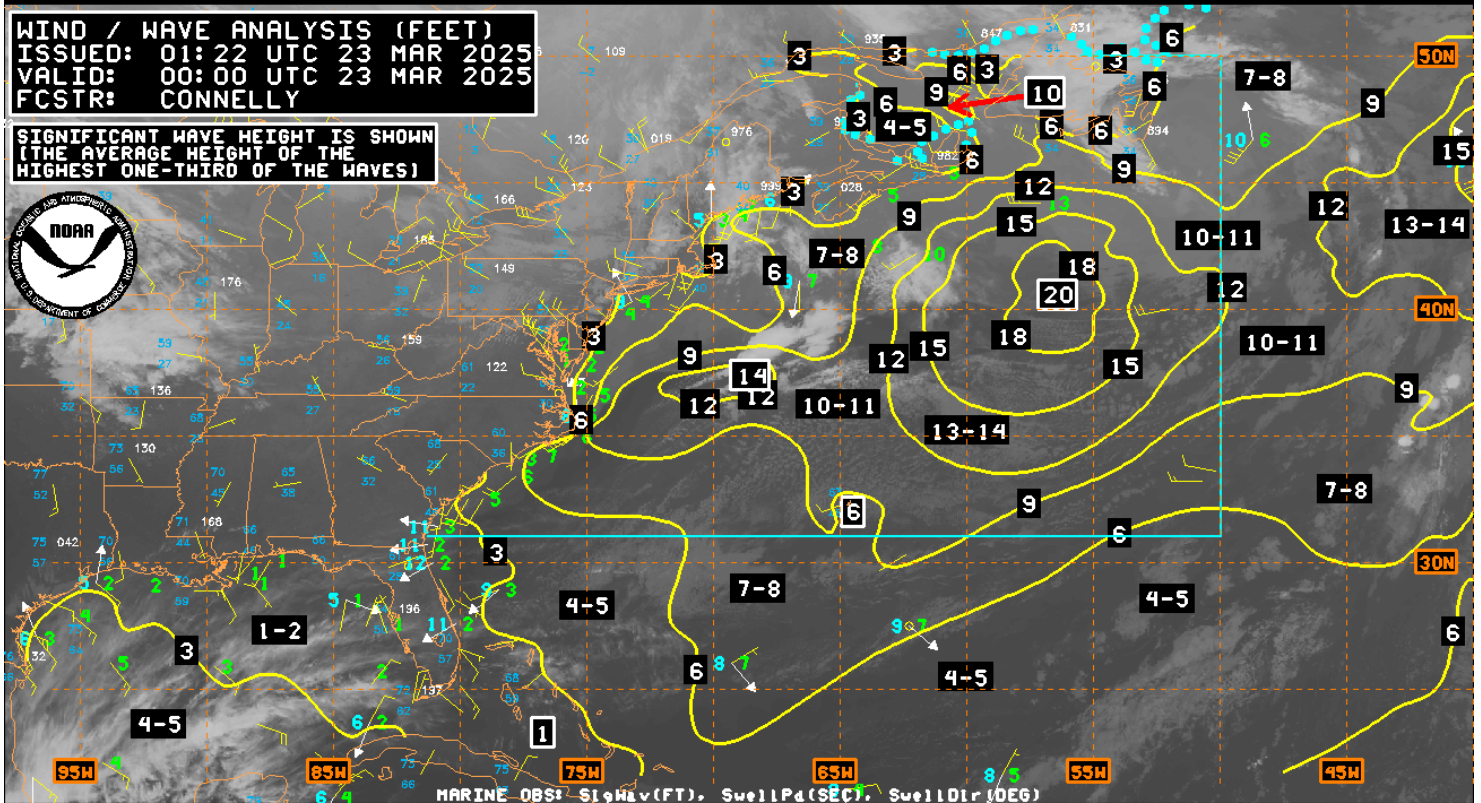


ATLANTIC OCEAN ANALYSIS



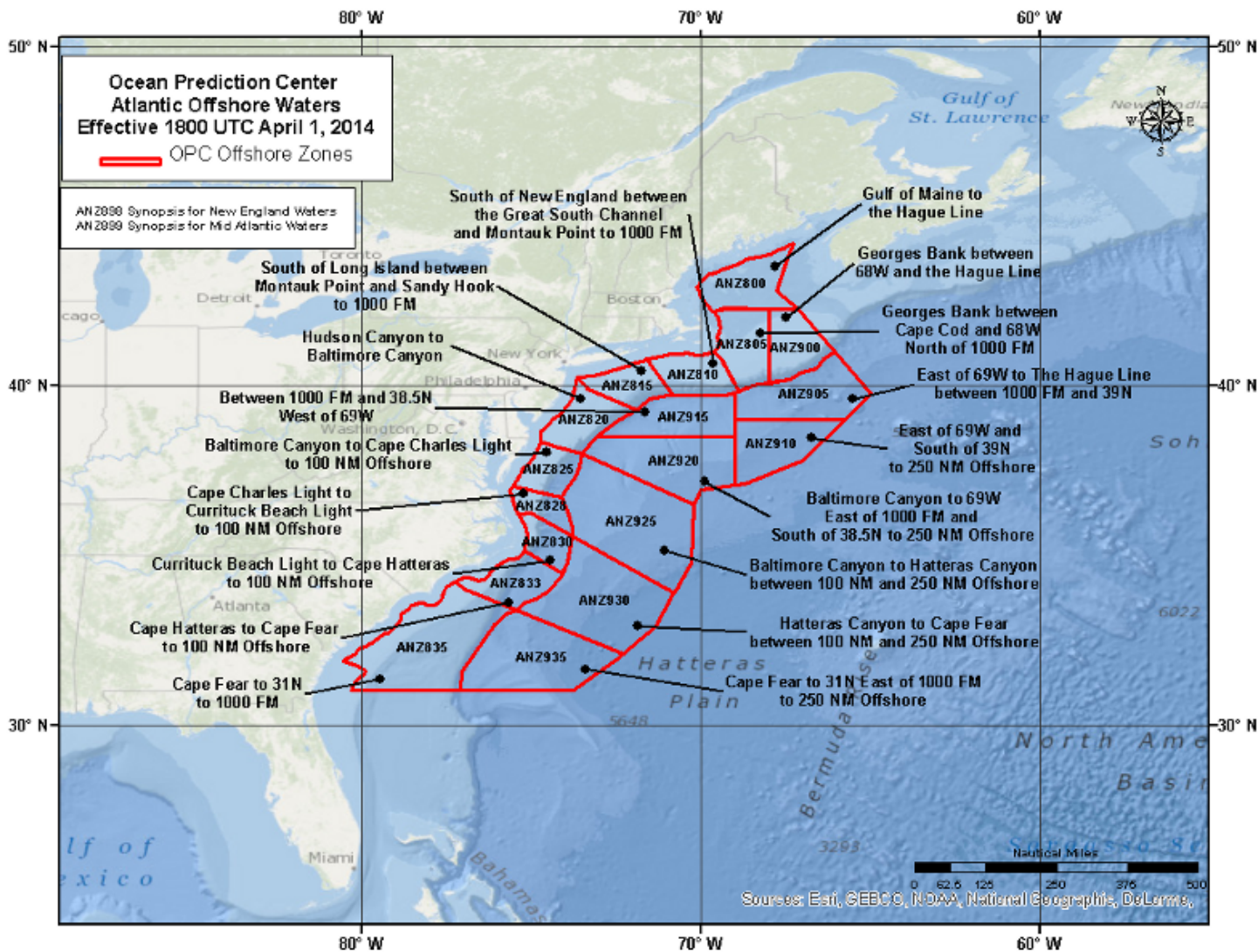
WIND / WAVE ANALYSIS (FEET)
ISSUED: 01:22 UTC 23 MAR 2025
VALID: 00:00 UTC 23 MAR 2025
FCSTR: CONNELLY

SIGNIFICANT WAVE HEIGHT IS SHOWN
(THE AVERAGE HEIGHT OF THE
HIGHEST ONE-THIRD OF THE WAVES)



MARINE OBS: SigWav(FT), SwellPd(SEC), SwellDir(DEG)
NWS/NCEP - Ocean Prediction Center
ocean.weather.gov

OFFSHORE WATERS FORECAST: ZONE MAP



KWBC 230251

OFFNT1

Offshore Waters Forecast

NWS Ocean Prediction Center Washington DC

1051 PM EDT Sat Mar 22 2025

New England continental shelf and slope waters from 25 nm offshore to the Hague Line, except to 1000 fm south of New England.

Seas given as significant wave height, which is the average height of the highest 1/3 of the waves. Individual waves may be more than twice the significant wave height.

Locally higher winds and seas can be expected in and near tstms.

ANZ898-240215-

1051 PM EDT Sat Mar 22 2025

.SYNOPSIS FOR NEW ENGLAND WATERS...A cold front will move across the waters tonight. High pressure will build to the coast Sun, move offshore Sun night, then shift E of the area Mon. An area of low pressure will form over the Mid-Atlantic Mon and push a warm front N across the waters, followed by the associated cold front moving SE across the area Mon night as the low lifts NE into the Gulf of Saint Lawrence. A secondary cold front or low pressure trough will move E across the waters Tue and Tue night. Low pressure will develop S of the area Tue night, then then track NE across the outer portions Wed and Wed night. High pressure will build over the waters Thu and Thu night.

ANZ800-240215-

Gulf of Maine to the Hague Line-

1051 PM EDT Sat Mar 22 2025

...GALE WARNING...

.TONIGHT...W to SW winds 20 to 25 kt, becoming W to NW 25 to 35 kt. Seas 5 to 6 ft, building to 6 to 10 ft.

.SUN...NW winds 20 to 30 kt. Seas 6 to 11 ft.

.SUN NIGHT...NW winds 15 to 25 kt, becoming variable 5 to 15 kt. Seas 5 to 9 ft.

.MON...S winds 15 to 25 kt. Seas 5 to 8 ft. Rain and areas of fog with vsby 1 nm or less.

.MON NIGHT...S winds 20 to 30 kt, becoming W 5 to 15 kt. Seas 5 to 9 ft.

.TUE...W to SW winds 5 to 15 kt. Seas 4 to 7 ft.

.TUE NIGHT...W winds 10 to 20 kt. Seas 4 to 7 ft.

.WED...W winds 10 to 20 kt, becoming SW 5 to 15 kt. Seas 4 to 7 ft.
.WED NIGHT...Variable winds 5 to 15 kt, becoming N to NW 15 to 20 kt. Seas 4 to 7 ft.
.THU...NW winds 15 to 20 kt, becoming W 10 to 15 kt. Seas 4 to 7 ft.
.THU NIGHT...W winds 10 to 20 kt, becoming SW 10 to 15 kt. Seas 3 to 6 ft.

ANZ805-240215-

Georges Bank between Cape Cod and 68W north of 1000 FM-
1051 PM EDT Sat Mar 22 2025

...GALE WARNING...

.TONIGHT...W winds 20 to 25 kt, becoming W to NW 25 to 35 kt. Seas 6 to 10 ft.
.SUN...NW winds 20 to 30 kt. Seas 6 to 11 ft.
.SUN NIGHT...NW winds 10 to 20 kt, becoming S to SW less than 10 kt. Seas 5 to 8 ft.
.MON...S winds 20 to 30 kt. Seas 5 to 8 ft. Rain.
.MON NIGHT...S to SW winds 15 to 25 kt, becoming W 5 to 15 kt. Seas 5 to 9 ft.
.TUE...W winds 5 to 15 kt, becoming W to SW 10 to 20 kt. Seas 5 to 9 ft.
.TUE NIGHT...W winds 10 to 20 kt, becoming 10 to 15 kt. Seas 4 to 7 ft.
.WED...W to SW winds 5 to 15 kt, becoming variable. Seas 4 to 6 ft.
.WED NIGHT...W to SW winds 5 to 15 kt, becoming NW 15 to 20 kt. Seas 4 to 8 ft.
.THU...W to NW winds 10 to 15 kt. Seas 5 to 8 ft.
.THU NIGHT...W winds 10 to 15 kt. Seas 4 to 6 ft.

ANZ900-240215-

Georges Bank between 68W and the Hague Line-
1051 PM EDT Sat Mar 22 2025

.TONIGHT...W to SW winds 20 to 30 kt. Seas 6 to 9 ft.
.SUN...W to NW winds 20 to 30 kt. Seas 9 to 11 ft.
.SUN NIGHT...NW winds 15 to 25 kt, becoming W to NW less than 10 kt. Seas 6 to 10 ft.
.MON...S winds 10 to 20 kt, increasing to 20 to 30 kt. Seas 4 to 7 ft.
.MON NIGHT...S to SW winds 20 to 30 kt, becoming W to SW 10 to 20 kt. Seas 6 to 9 ft.
.TUE...W winds 5 to 10 kt, increasing to 10 to 20 kt. Seas 6 to 9 ft.

.TUE NIGHT...W winds 15 to 20 kt, diminishing to 10 to 15 kt.
Seas 6 to 8 ft.
.WED...SW winds 5 to 10 kt, becoming S 5 to 15 kt. Seas 5 to
7 ft.
.WED NIGHT...SE winds 10 to 20 kt, becoming W to NW 15 to 20 kt.
Seas 5 to 9 ft.
.THU...NW winds 10 to 15 kt, becoming W. Seas 6 to 9 ft.
.THU NIGHT...W winds 10 to 15 kt. Seas 5 to 7 ft.

ANZ810-240215-

South of New England between the Great South Channel and Montauk
Point to 1000 FM-

1051 PM EDT Sat Mar 22 2025

.TONIGHT...W winds 20 to 25 kt, becoming NW 20 to 30 kt. Seas
6 to 9 ft.
.SUN...NW winds 20 to 30 kt, diminishing to 15 to 20 kt. Seas
6 to 10 ft.
.SUN NIGHT...W winds 5 to 15 kt, becoming S. Seas 4 to 7 ft.
.MON...S winds 15 to 25 kt. Seas 4 to 7 ft. Rain.
.MON NIGHT...SW winds 10 to 20 kt, becoming W 5 to 15 kt. Seas
6 to 9 ft.
.TUE...W winds 5 to 15 kt, increasing to 15 to 20 kt. Seas 6 to
8 ft.
.TUE NIGHT...W winds 10 to 20 kt, diminishing to 5 to 10 kt.
Seas 5 to 7 ft.
.WED...Variable winds less than 10 kt, becoming NE. Seas 4 to
6 ft.
.WED NIGHT...NW winds 10 to 15 kt. Seas 4 to 8 ft.
.THU...W to NW winds 10 to 15 kt. Seas 4 to 7 ft.
.THU NIGHT...W winds 10 to 15 kt, becoming W to SW 15 to 20 kt.
Seas 4 to 6 ft.

ANZ815-240215-

South of Long Island between Montauk Point and Sandy Hook to
1000 FM-

1051 PM EDT Sat Mar 22 2025

.TONIGHT...W to NW winds 20 to 30 kt. Seas 5 to 9 ft.
.SUN...W to NW winds 15 to 25 kt. Seas 5 to 9 ft.
.SUN NIGHT...S to SW winds 5 to 15 kt, becoming S 10 to 20 kt.
Seas 3 to 5 ft.
.MON...S to SE winds 20 to 25 kt, becoming S to SW 15 to 25 kt.
Seas 4 to 7 ft. Rain.
.MON NIGHT...SW winds 10 to 15 kt, becoming W. Seas 4 to 7 ft.
.TUE...W winds 10 to 20 kt. Seas 4 to 7 ft.
.TUE NIGHT...W winds 10 to 15 kt, becoming W to NW. Seas 3 to
6 ft.

.WED...E to NE winds 5 to 15 kt, becoming N to NE. Seas 3 to 5 ft.

.WED NIGHT...NW winds 10 to 15 kt, becoming 10 to 20 kt. Seas 4 to 7 ft.

.THU...W to NW winds 10 to 15 kt. Seas 3 to 6 ft.

.THU NIGHT...W to SW winds 10 to 20 kt. Seas 3 to 5 ft.

KWBC 230251

OFFNT2

Offshore Waters Forecast

NWS Ocean Prediction Center Washington DC

1051 PM EDT Sat Mar 22 2025

West central North Atlantic continental shelf and slope waters beyond 20 nm to 250 nm offshore, including south of Georges Bank from 1000 fm to 250 nm offshore.

Seas given as significant wave height, which is the average height of the highest 1/3 of the waves. Individual waves may be more than twice the significant wave height.

Locally higher winds and seas can be expected in and near tstms.

ANZ899-240215-

1051 PM EDT Sat Mar 22 2025

.SYNOPSIS FOR MID ATLC WATERS...A cold front will move across the waters tonight, stall over the S portions Sun, then return N as a warm front Sun night and Mon while a high pressure ridge builds across the southern waters. Another strong cold front will approach the coast Mon, then move across the waters Mon night into Tue. High pressure will build offshore later Tue, then shift E of the area Tue night. Low pressure will develop off the Delmarva Tue night, then track NE across the N portion Wed and Wed night while pulling a cold front SE across the central and S portions. High pressure will build to the coast Thu, then settle offshore Thu night.

ANZ820-240215-

Hudson Canyon to Baltimore Canyon to 1000 FM-

1051 PM EDT Sat Mar 22 2025

.TONIGHT...NW winds 15 to 25 kt. Seas 4 to 8 ft.

.SUN...NW winds 15 to 25 kt, diminishing to 5 to 15 kt. Seas 5 to 8 ft.

.SUN NIGHT...S winds 5 to 15 kt, becoming S to SE 10 to 20 kt. Seas 3 to 5 ft.

.MON...S winds 20 to 25 kt, becoming SW 15 to 25 kt. Seas 4 to 7 ft. Rain.

.MON NIGHT...W to SW winds 10 to 20 kt, becoming W to NW 10 to 15 kt. Seas 4 to 7 ft.

.TUE...W winds 10 to 15 kt. Seas 4 to 7 ft.

.TUE NIGHT...SW winds 5 to 15 kt, becoming W to SW 5 to 10 kt. Seas 3 to 5 ft.

.WED...Variable winds less than 10 kt, becoming N. Seas 3 to

5 ft.

.WED NIGHT...N to NW winds 10 to 15 kt. Seas 3 to 6 ft.

.THU...NW winds 10 to 15 kt. Seas 3 to 6 ft.

.THU NIGHT...W winds 10 to 15 kt, becoming SW. Seas 3 to 4 ft.

ANZ915-240215-

Between 1000FM and 38.5 N west of 69 W-

1051 PM EDT Sat Mar 22 2025

.TONIGHT...W winds 20 to 25 kt, becoming NW. Seas 6 to 9 ft.

.SUN...NW winds 15 to 25 kt. Seas 5 to 9 ft.

.SUN NIGHT...W to NW winds 5 to 15 kt, becoming S. Seas 5 to 8 ft.

.MON...S winds 15 to 25 kt. Seas 4 to 8 ft.

.MON NIGHT...SW winds 20 to 30 kt, becoming W to SW 10 to 20 kt. Seas 6 to 11 ft.

.TUE...W to NW winds 5 to 15 kt, becoming W 10 to 20 kt. Seas 6 to 10 ft.

.TUE NIGHT...W winds 10 to 20 kt, becoming SW 5 to 15 kt. Seas 4 to 7 ft.

.WED...S to SE winds less than 10 kt, becoming S to SW 10 to 20 kt. Seas 4 to 8 ft.

.WED NIGHT...W to NW winds 10 to 15 kt. Seas 5 to 9 ft.

.THU...NW winds 10 to 15 kt. Seas 5 to 7 ft.

.THU NIGHT...W to NW winds 10 to 15 kt. Seas 4 to 6 ft.

ANZ920-240215-

Baltimore Canyon to 69W east of 1000 FM and south of 38.5N to 250 NM offshore-

1051 PM EDT Sat Mar 22 2025

...GALE WARNING...

.TONIGHT...W winds 20 to 30 kt, becoming NW 20 to 25 kt. Seas 7 to 13 ft.

.SUN...NW winds 15 to 25 kt. Seas 6 to 10 ft.

.SUN NIGHT...NW winds 5 to 15 kt, becoming S. Seas 5 to 8 ft.

.MON...S winds 20 to 30 kt, becoming S to SW 25 to 35 kt. Seas 7 to 11 ft.

.MON NIGHT...SW winds 25 to 35 kt. Seas 8 to 14 ft.

.TUE...NW winds 10 to 15 kt, becoming W 10 to 20 kt. Seas 8 to 13 ft.

.TUE NIGHT...W winds 10 to 20 kt, becoming W to SW 5 to 15 kt. Seas 4 to 8 ft.

.WED...S winds 5 to 15 kt, becoming S to SW 15 to 25 kt. Seas 4 to 5 ft, building to 5 to 9 ft.

.WED NIGHT...W to NW winds 15 to 20 kt. Seas 6 to 10 ft.

.THU...NW winds 15 to 20 kt. Seas 5 to 8 ft.

.THU NIGHT...NW winds 10 to 20 kt, becoming W to NW 10 to 15 kt.
Seas 4 to 8 ft.

ANZ905-240215-

East of 69W to the Hague Line between 1000 FM and 39N-
1051 PM EDT Sat Mar 22 2025

.TONIGHT...W to SW winds 20 to 30 kt. Seas 6 to 10 ft.
.SUN...W to NW winds 20 to 30 kt. Seas 8 to 12 ft.
.SUN NIGHT...NW winds 15 to 25 kt, becoming variable 5 to 15 kt.
Seas 6 to 11 ft.
.MON...S winds 15 to 25 kt. Seas 4 to 7 ft.
.MON NIGHT...S winds 20 to 30 kt, becoming SW. Seas 7 to 12 ft.
.TUE...SW winds 15 to 25 kt, becoming W 10 to 20 kt. Seas 7 to
12 ft.
.TUE NIGHT...W winds 10 to 20 kt. Seas 6 to 9 ft.
.WED...SW winds 5 to 15 kt, becoming S 10 to 20 kt. Seas 5 to
8 ft.
.WED NIGHT...S to SW winds 10 to 20 kt, becoming W to NW 15 to
20 kt. Seas 7 to 9 ft.
.THU...NW winds 10 to 15 kt. Seas 6 to 9 ft.
.THU NIGHT...NW winds 15 to 20 kt, becoming W 10 to 15 kt. Seas
5 to 8 ft.

ANZ910-240215-

East of 69W and south of 39N to 250 NM offshore-
1051 PM EDT Sat Mar 22 2025

...GALE FORCE WINDS POSSIBLE MON NIGHT...

.TONIGHT...W winds 20 to 30 kt. Seas 9 to 13 ft.
.SUN...W to NW winds 20 to 30 kt. Seas 8 to 11 ft.
.SUN NIGHT...NW winds 10 to 20 kt, becoming variable less than
10 kt. Seas 6 to 10 ft.
.MON...S winds 20 to 30 kt. Seas 5 to 9 ft.
.MON NIGHT...S to SW winds 25 to 35 kt. Seas 9 to 15 ft.
.TUE...SW winds 20 to 30 kt, becoming W 10 to 20 kt. Seas 8 to
14 ft.
.TUE NIGHT...W winds 10 to 20 kt. Seas 6 to 10 ft.
.WED...S winds 5 to 10 kt, increasing to 15 to 25 kt. Seas 5 to
8 ft.
.WED NIGHT...SW winds 15 to 20 kt, becoming NW. Seas 7 to 10 ft.
.THU...NW winds 10 to 15 kt. Seas 6 to 9 ft.
.THU NIGHT...NW winds 15 to 20 kt, diminishing to 10 to 15 kt.
Seas 6 to 8 ft.

ANZ825-240215-

Baltimore Canyon to Cape Charles Light to 100 NM offshore-
1051 PM EDT Sat Mar 22 2025

.TONIGHT...N to NW winds 15 to 25 kt. Seas 4 to 7 ft.
.SUN...N to NW winds 10 to 20 kt, diminishing to less than
10 kt. Seas 4 to 7 ft.
.SUN NIGHT...S to SE winds 10 to 20 kt. Seas 3 to 4 ft.
.MON...S to SW winds 15 to 25 kt. Seas 4 to 7 ft. Scattered
tstms.
.MON NIGHT...SW winds 10 to 20 kt, becoming NW 10 to 15 kt. Seas
4 to 8 ft.
.TUE...W to NW winds 5 to 10 kt, becoming W to SW 5 to 15 kt.
Seas 3 to 5 ft.
.TUE NIGHT...S winds 10 to 15 kt, becoming S to SW 5 to 10 kt.
Seas 3 to 4 ft.
.WED...SW winds 5 to 15 kt, becoming W 10 to 15 kt. Seas 3 to
6 ft.
.WED NIGHT...N to NW winds 10 to 15 kt. Seas 3 to 6 ft.
.THU...N to NW winds 10 to 15 kt. Seas 3 to 5 ft.
.THU NIGHT...W winds 5 to 10 kt, becoming SW 10 to 15 kt. Seas
3 to 4 ft.

ANZ828-240215-

Cape Charles Light to Currituck Beach Light to 100 NM offshore-
1051 PM EDT Sat Mar 22 2025

.TONIGHT...W winds 15 to 25 kt, becoming N 10 to 20 kt. Seas
5 to 8 ft.
.SUN...N winds 10 to 20 kt, diminishing to 5 to 15 kt. Seas 4 to
7 ft.
.SUN NIGHT...SE winds 10 to 20 kt, becoming S 15 to 25 kt. Seas
3 to 5 ft.
.MON...S to SW winds 20 to 30 kt. Seas 6 to 10 ft. Scattered
tstms.
.MON NIGHT...SW winds 20 to 30 kt, becoming W to NW 10 to 20 kt.
Seas 6 to 11 ft.
.TUE...N to NW winds 5 to 15 kt, becoming W. Seas 4 to 7 ft.
.TUE NIGHT...S winds 5 to 15 kt, becoming SW 10 to 15 kt. Seas
3 to 5 ft.
.WED...SW winds 10 to 20 kt, becoming W. Seas 5 to 8 ft.
.WED NIGHT...N winds 10 to 20 kt, becoming 10 to 15 kt. Seas
4 to 7 ft.
.THU...N winds 10 to 20 kt, becoming NW. Seas 3 to 6 ft.
.THU NIGHT...N to NW winds 5 to 15 kt, becoming SW 5 to 10 kt.
Seas 3 to 5 ft.

ANZ925-240215-

Baltimore Canyon to Hatteras Canyon between 100 NM and 250 NM

offshore-
1051 PM EDT Sat Mar 22 2025

...GALE WARNING...

.TONIGHT...W to NW winds 20 to 30 kt. Seas 6 to 11 ft.
.SUN...N to NW winds 15 to 25 kt. Seas 5 to 9 ft.
.SUN NIGHT...Variable winds 5 to 15 kt, becoming S 15 to 25 kt.
Seas 4 to 7 ft.
.MON...S winds 20 to 30 kt, becoming S to SW 25 to 35 kt. Seas
6 to 11 ft.
.MON NIGHT...S to SW winds 25 to 35 kt, becoming SW 20 to 30 kt.
Seas 8 to 13 ft.
.TUE...W to SW winds 15 to 25 kt, becoming W 5 to 15 kt. Seas
6 to 11 ft.
.TUE NIGHT...W winds 5 to 15 kt, becoming SW. Seas 3 to 6 ft.
.WED...S to SW winds 15 to 25 kt. Seas 4 to 6 ft, building to
6 to 10 ft.
.WED NIGHT...W to NW winds 10 to 20 kt, becoming N 10 to 15 kt.
Seas 5 to 9 ft.
.THU...N to NW winds 10 to 20 kt. Seas 5 to 7 ft.
.THU NIGHT...N to NW winds 10 to 20 kt, becoming NW 5 to 15 kt.
Seas 4 to 8 ft.

ANZ830-240215-
Currituck Beach Light to Cape Hatteras to 100 NM offshore-
1051 PM EDT Sat Mar 22 2025

.TONIGHT...W winds 15 to 25 kt. Seas 5 to 9 ft.
.SUN...N winds 10 to 20 kt, becoming NE 5 to 10 kt. Seas 4 to
7 ft.
.SUN NIGHT...S to SE winds 15 to 25 kt. Seas 3 to 6 ft.
.MON...SW winds 20 to 30 kt. Seas 6 to 10 ft. Scattered tstms.
.MON NIGHT...SW winds 20 to 30 kt, becoming W to NW 15 to 25 kt.
Seas 6 to 11 ft.
.TUE...N to NW winds 10 to 20 kt, becoming W to NW 5 to 15 kt.
Seas 5 to 8 ft.
.TUE NIGHT...SW winds 5 to 15 kt. Seas 3 to 5 ft.
.WED...W to SW winds 15 to 25 kt. Seas 4 to 8 ft.
.WED NIGHT...NW winds 10 to 20 kt, becoming N 10 to 15 kt. Seas
4 to 8 ft.
.THU...N winds 15 to 20 kt. Seas 4 to 7 ft.
.THU NIGHT...N winds 5 to 15 kt, becoming variable 5 to 10 kt.
Seas 3 to 6 ft.

ANZ833-240215-
Cape Hatteras to Cape Fear to 100 NM Offshore.-
1051 PM EDT Sat Mar 22 2025

.TONIGHT...W winds 15 to 25 kt. Seas 5 to 8 ft.
.SUN...NE winds 10 to 20 kt, becoming E to NE less than 10 kt.
Seas 4 to 7 ft.
.SUN NIGHT...S to SW winds 15 to 25 kt. Seas 3 to 5 ft.
.MON...SW winds 20 to 30 kt. Seas 5 to 9 ft. Scattered tstms.
.MON NIGHT...SW winds 20 to 30 kt, becoming W 15 to 25 kt. Seas
6 to 10 ft.
.TUE...N to NW winds 10 to 15 kt, becoming W to NW 5 to 10 kt.
Seas 5 to 8 ft.
.TUE NIGHT...SW winds 5 to 15 kt, increasing to 10 to 20 kt.
Seas 3 to 5 ft.
.WED...SW winds 15 to 25 kt. Seas 4 to 8 ft.
.WED NIGHT...W winds 10 to 20 kt, becoming N 10 to 15 kt. Seas
4 to 8 ft.
.THU...N winds 10 to 20 kt. Seas 4 to 7 ft.
.THU NIGHT...N winds 10 to 15 kt, becoming N to NE 5 to 10 kt.
Seas 4 to 7 ft.

ANZ930-240215-

Hatteras Canyon to Cape Fear between 100 NM and 250 NM offshore-
1051 PM EDT Sat Mar 22 2025

.TONIGHT...W winds 15 to 25 kt. Seas 6 to 10 ft.
.SUN...N winds 10 to 20 kt, becoming N to NE 5 to 15 kt. Seas
4 to 7 ft.
.SUN NIGHT...E to SE winds 5 to 15 kt, becoming S 10 to 20 kt.
Seas 3 to 6 ft.
.MON...S to SW winds 20 to 30 kt. Seas 6 to 10 ft.
.MON NIGHT...S to SW winds 20 to 30 kt. Seas 6 to 11 ft.
.TUE...W to SW winds 15 to 25 kt, becoming NW 5 to 15 kt. Seas
5 to 9 ft.
.TUE NIGHT...W to NW winds less than 10 kt, becoming variable.
Seas 3 to 6 ft.
.WED...S winds 5 to 15 kt, becoming SW 10 to 20 kt. Seas 5 to
8 ft.
.WED NIGHT...W to SW winds 10 to 20 kt, becoming N 5 to 15 kt.
Seas 4 to 8 ft.
.THU...N winds 10 to 20 kt. Seas 4 to 7 ft.
.THU NIGHT...N winds 5 to 15 kt. Seas 4 to 7 ft.

ANZ835-240215-

Cape Fear to 31N to 1000 FM-
1051 PM EDT Sat Mar 22 2025

.TONIGHT...W winds 10 to 20 kt. Seas 3 to 6 ft.
.SUN...N to NE winds 5 to 15 kt, becoming S to SW. Seas 3 to
5 ft.

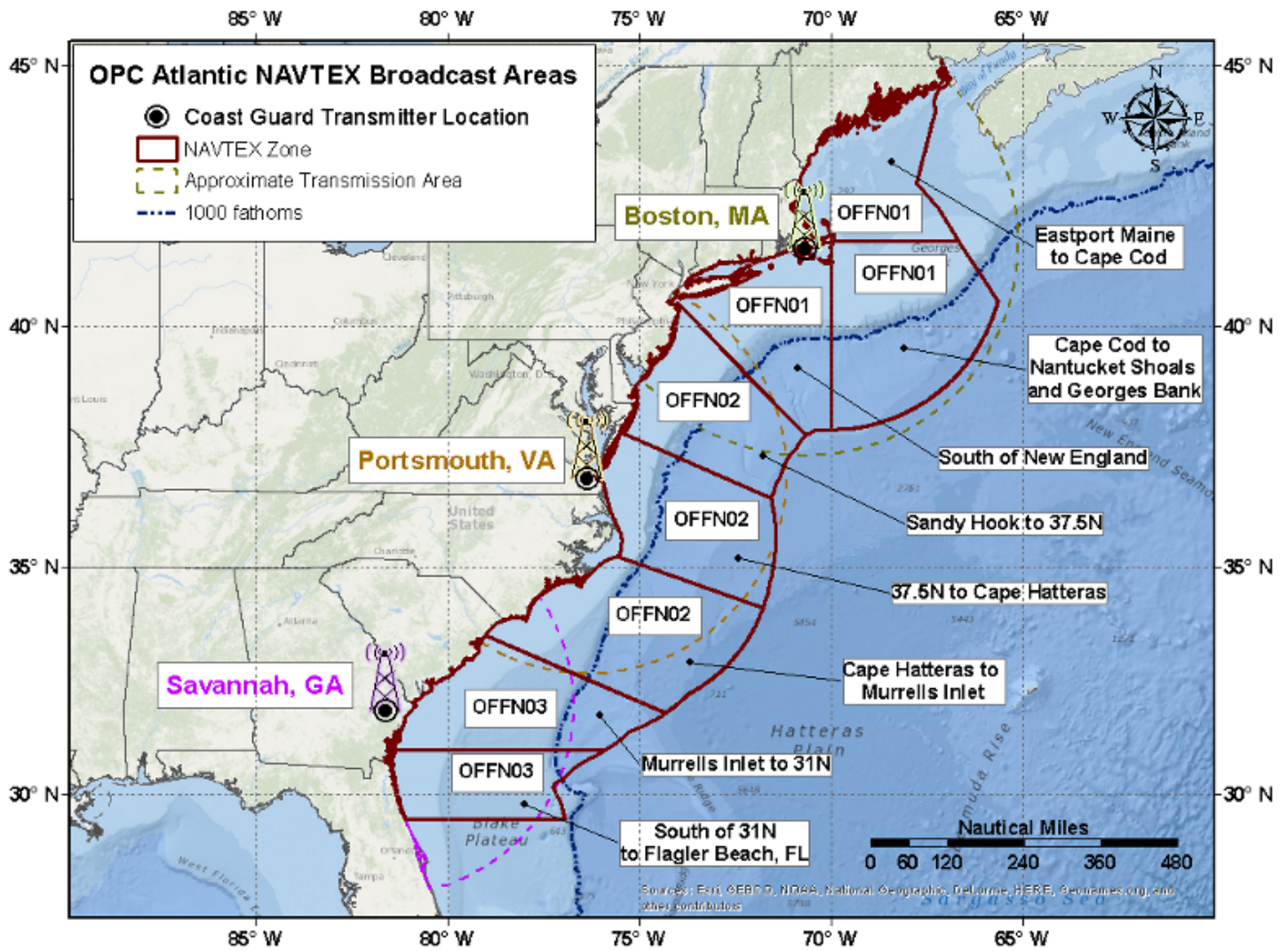
.SUN NIGHT...S to SW winds 15 to 25 kt. Seas 3 to 5 ft.
.MON...SW winds 20 to 30 kt. Seas 5 to 8 ft. Slight chance of showers.
.MON NIGHT...W to SW winds 20 to 30 kt. Seas 5 to 9 ft.
.TUE...N winds 5 to 15 kt, becoming variable. Seas 4 to 7 ft.
.TUE NIGHT...S to SW winds 5 to 15 kt. Seas 3 to 4 ft.
.WED...SW winds 5 to 15 kt, increasing to 10 to 20 kt. Seas 3 to 6 ft.
.WED NIGHT...SW winds 5 to 15 kt, becoming N 10 to 15 kt. Seas 3 to 6 ft.
.THU...N to NE winds 10 to 20 kt. Seas 4 to 7 ft.
.THU NIGHT...NE winds 5 to 15 kt, becoming E. Seas 4 to 7 ft.

ANZ935-240215-

Cape Fear to 31N east of 1000 FM to 250 NM offshore-
1051 PM EDT Sat Mar 22 2025

.TONIGHT...W winds 15 to 25 kt. Seas 4 to 7 ft.
.SUN...W to NW winds 5 to 15 kt, becoming W to SW. Seas 3 to 6 ft.
.SUN NIGHT...S to SW winds 5 to 15 kt, becoming S 10 to 20 kt. Seas 3 to 5 ft.
.MON...S to SW winds 20 to 30 kt. Seas 4 to 7 ft.
.MON NIGHT...W to SW winds 20 to 30 kt. Seas 4 to 8 ft.
.TUE...W to NW winds 10 to 20 kt, diminishing to 5 to 15 kt. Seas 4 to 7 ft.
.TUE NIGHT...Variable winds less than 10 kt. Seas 3 to 5 ft.
.WED...S winds 5 to 15 kt, becoming SW 10 to 20 kt. Seas 3 to 5 ft.
.WED NIGHT...W to SW winds 5 to 15 kt. Seas 3 to 6 ft.
.THU...N winds 10 to 20 kt. Seas 4 to 7 ft.
.THU NIGHT...N winds 15 to 20 kt, becoming NE 5 to 15 kt. Seas 5 to 8 ft.

NAVTEX MARINE FORECAST: ZONE MAP



KWNM 230258

OFFN01

NAVTEX Marine Forecast for NE US waters
NWS Ocean Prediction Center Washington DC
1058 PM EDT Sat Mar 22 2025

Conditions given represent the highest within that period.

Locally higher winds and seas can be expected in and near tstms.

...Please refer to Coastal Waters Forecasts (CWF) available through NOAA Weather Radio and other means for detailed coastal waters forecasts...

.SYNOPSIS...A cold front will move across the waters tonight. High pressure will build to the coast Sun, move offshore Sun night, then shift E of the area Mon. An area of low pressure will form over the Mid-Atlantic Mon and push a warm front N across the waters, followed by the associated cold front moving SE across the area Mon night as the low lifts NE into the Gulf of Saint Lawrence. A secondary cold front or low pressure trough will move E across the waters Tue and Tue night. Low pressure will develop S of the area Tue night, then then track NE across the outer portions Wed and Wed night. High pressure will build over the waters Thu and Thu night.

Eastport Maine to Cape Cod

...GALE WARNING...

.TONIGHT...W to SW winds 15 to 25 kt, becoming W to NW 25 to 35 kt. Seas 4 to 6 ft, building to 7 to 10 ft.
.SUN...NW winds 20 to 30 kt. Seas 8 to 11 ft.
.SUN NIGHT...Variable winds 15 to 25 kt. Seas 5 to 9 ft.
.MON...S winds 20 to 30 kt. Seas 5 to 8 ft. Rain and slight chance of snow with vsby 1 nm or less.
.MON NIGHT...W to SW winds 20 to 30 kt. Seas 5 to 9 ft.
.TUE...SW winds 10 to 20 kt. Seas 5 to 7 ft.
.TUE NIGHT...W winds 10 to 20 kt. Seas 5 to 7 ft.
.WED...SW winds 10 to 20 kt. Seas 4 to 7 ft.
.WED NIGHT...NW winds 10 to 20 kt. Seas 4 to 8 ft.
.THU...W winds 10 to 20 kt. Seas 5 to 8 ft.
.THU NIGHT...W to SW winds 10 to 20 kt. Seas 4 to 7 ft.

Cape Cod to Nantucket Shoals and Georges Bank

...GALE FORCE WINDS POSSIBLE MON NIGHT...

.TONIGHT...W winds 20 to 30 kt. Seas 8 to 11 ft.

.SUN...W to NW winds 20 to 30 kt. Seas 8 to 12 ft.
.SUN NIGHT...Variable winds 15 to 25 kt. Seas 6 to 11 ft.
.MON...S winds 20 to 30 kt. Seas 6 to 10 ft.
.MON NIGHT...SW winds 25 to 35 kt. Seas 9 to 14 ft.
.TUE...W winds 10 to 20 kt. Seas 7 to 13 ft.
.TUE NIGHT...W winds 10 to 20 kt. Seas 6 to 9 ft.
.WED...S winds 10 to 20 kt. Seas 5 to 9 ft.
.WED NIGHT...NW winds 10 to 20 kt. Seas 6 to 10 ft.
.THU...W to NW winds 10 to 20 kt. Seas 5 to 9 ft.
.THU NIGHT...W winds 10 to 20 kt. Seas 5 to 7 ft.

South of New England

.TONIGHT...W winds 15 to 25 kt, becoming NW 20 to 30 kt. Seas
6 to 10 ft.
.SUN...W to NW winds 20 to 30 kt. Seas 5 to 9 ft.
.SUN NIGHT...S winds 10 to 20 kt. Seas 4 to 7 ft.
.MON...S to SW winds 20 to 30 kt. Seas 6 to 10 ft. Rain.
.MON NIGHT...W winds 20 to 30 kt. Seas 8 to 13 ft.
.TUE...W winds 10 to 20 kt. Seas 6 to 10 ft.
.TUE NIGHT...W to SW winds 10 to 20 kt. Seas 4 to 7 ft.
.WED...W to SW winds 10 to 20 kt. Seas 5 to 9 ft.
.WED NIGHT...NW winds 10 to 20 kt. Seas 5 to 9 ft.
.THU...W to NW winds 10 to 20 kt. Seas 4 to 7 ft.
.THU NIGHT...W winds 10 to 20 kt. Seas 3 to 6 ft.

KWNM 230258

OFFN02

NAVTEX Marine Forecast for Mid-Atlantic states waters

NWS Ocean Prediction Center Washington DC

1058 PM EDT Sat Mar 22 2025

Conditions given represent the highest within that period.

Locally higher winds and seas can be expected in and near tstms.

...Please refer to Coastal Waters Forecasts (CWF) available through NOAA Weather Radio and other means for detailed coastal waters forecasts...

.SYNOPSIS...A cold front will move across the waters tonight, stall over the S portions Sun, then return N as a warm front Sun night and Mon while a high pressure ridge builds across the southern waters. Another strong cold front will approach the coast Mon, then move across the waters Mon night into Tue. High pressure will build offshore later Tue, then shift E of the area Tue night. Low pressure will develop off the Delmarva Tue night, then track NE across the N portion Wed and Wed night while pulling a cold front SE across the central and S portions. High pressure will build to the coast Thu, then settle offshore Thu night.

Sandy Hook to 37.5N

...GALE WARNING...

.TONIGHT...W to NW winds 15 to 25 kt. Seas 7 to 11 ft.
.SUN...NW winds 15 to 25 kt. Seas 5 to 9 ft.
.SUN NIGHT...S to SE winds 15 to 25 kt. Seas 3 to 6 ft.
.MON...SW winds 25 to 35 kt. Seas 6 to 11 ft. Rain.
.MON NIGHT...W to NW winds 25 to 35 kt. Seas 9 to 13 ft.
.TUE...W winds 10 to 20 kt. Seas 5 to 9 ft.
.TUE NIGHT...SW winds 10 to 20 kt. Seas 4 to 7 ft.
.WED...W to SW winds 15 to 25 kt. Seas 6 to 10 ft.
.WED NIGHT...NW winds 10 to 20 kt. Seas 5 to 9 ft.
.THU...NW winds 10 to 20 kt. Seas 5 to 7 ft.
.THU NIGHT...W to SW winds 5 to 15 kt. Seas 4 to 7 ft.

37.5N to Cape Hatteras

...GALE WARNING...

.TONIGHT...W winds 15 to 25 kt, becoming N. Seas 7 to 10 ft.
.SUN...N to NW winds 15 to 25 kt. Seas 5 to 9 ft.
.SUN NIGHT...S winds 15 to 25 kt. Seas 4 to 6 ft.

.MON...SW winds 25 to 35 kt. Seas 6 to 11 ft.
.MON NIGHT...W to SW winds 20 to 30 kt. Seas 8 to 12 ft.
.TUE...W winds 10 to 20 kt. Seas 5 to 9 ft.
.TUE NIGHT...SW winds 10 to 20 kt. Seas 3 to 6 ft.
.WED...SW winds 15 to 25 kt. Seas 5 to 9 ft.
.WED NIGHT...N winds 10 to 20 kt. Seas 5 to 9 ft.
.THU...NW winds 10 to 20 kt. Seas 5 to 7 ft.
.THU NIGHT...W to SW winds 10 to 20 kt. Seas 4 to 7 ft.

Cape Hatteras to Murrells Inlet

.TONIGHT...W winds 15 to 25 kt. Seas 5 to 9 ft.
.SUN...E to NE winds 10 to 20 kt. Seas 4 to 7 ft.
.SUN NIGHT...S to SW winds 15 to 25 kt. Seas 3 to 5 ft.
.MON...SW winds 20 to 30 kt. Seas 5 to 9 ft.
.MON NIGHT...W to SW winds 20 to 30 kt. Seas 7 to 10 ft.
.TUE...NW winds 10 to 20 kt. Seas 5 to 8 ft.
.TUE NIGHT...S to SW winds 10 to 20 kt. Seas 3 to 6 ft.
.WED...SW winds 15 to 25 kt. Seas 5 to 8 ft.
.WED NIGHT...N winds 10 to 20 kt. Seas 5 to 8 ft.
.THU...N winds 10 to 20 kt. Seas 5 to 7 ft.
.THU NIGHT...NE winds 5 to 15 kt. Seas 5 to 7 ft.

KWNM 230258

OFFN03

NAVTEX Marine Forecast for southeast U.S. waters

NWS Ocean Prediction Center Washington DC

1058 PM EDT Sat Mar 22 2025

Conditions given represent the highest within that period.

Locally higher winds and seas can be expected in and near tstms.

...Please refer to Coastal Waters Forecasts (CWF) available through NOAA Weather Radio and other means for detailed coastal waters forecasts...

.SYNOPSIS...High pressure will shift SE of the area tonight. A cold front will approach the area later tonight, stall across the N portions Sun, then lift back N as a warm front Sun night. High pressure will build E over the area Sun, then shift E of the region Sun night. Another cold front will approach the coast Mon, then move across the waters Mon night into Tue. High pressure will build SE across the area later Tue and Tue night, then shift E Wed. Another cold front will move SE across the area late Wed and Wed night. High pressure will build SE over the waters Thu and Thu night.

Murrells Inlet to 31N

.TONIGHT...W to SW winds 10 to 20 kt. Seas 4 to 6 ft.
.SUN...S to SW winds 5 to 15 kt. Seas 3 to 5 ft.
.SUN NIGHT...S winds 10 to 20 kt. Seas 3 to 4 ft.
.MON...SW winds 15 to 25 kt. Seas 4 to 7 ft.
.MON NIGHT...W winds 15 to 25 kt. Seas 5 to 8 ft.
.TUE...Variable winds 10 to 20 kt. Seas 4 to 7 ft.
.TUE NIGHT...S winds 5 to 15 kt. Seas 3 to 5 ft.
.WED...SW winds 5 to 15 kt. Seas 3 to 4 ft.
.WED NIGHT...N winds 10 to 20 kt. Seas 3 to 5 ft.
.THU...N to NE winds 10 to 20 kt. Seas 4 to 7 ft.
.THU NIGHT...E to NE winds 5 to 15 kt. Seas 5 to 7 ft.

South of 31N

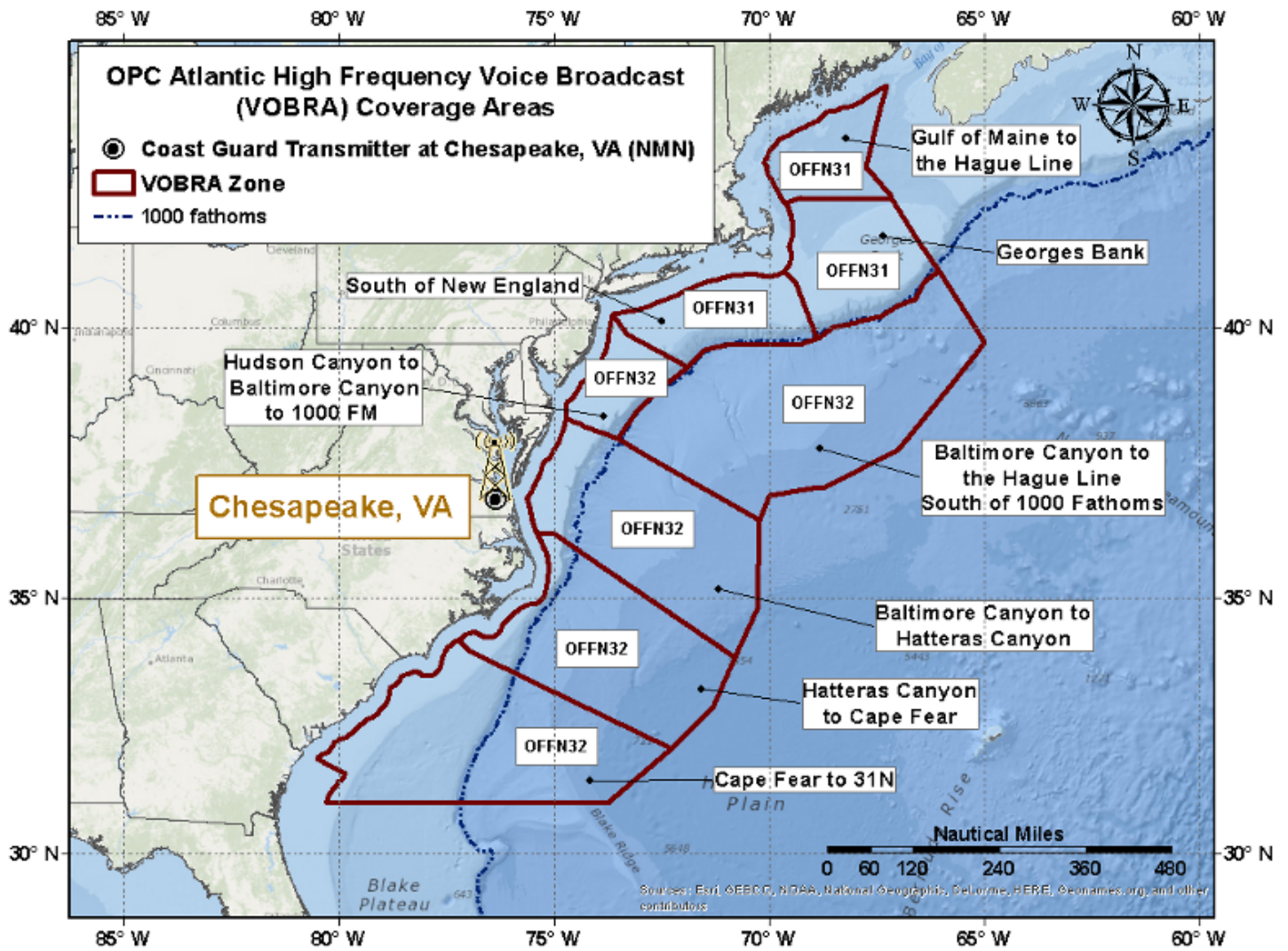
.TONIGHT...W to SW winds 5 to 15 kt. Seas 3 to 4 ft.
.SUN...S winds less than 10 kt. Seas 3 to 4 ft.
.SUN NIGHT...S winds 10 to 20 kt. Seas 3 to 4 ft.
.MON...S to SW winds 10 to 20 kt. Seas 3 to 5 ft.
.MON NIGHT...W to SW winds 5 to 15 kt. Seas 3 to 5 ft.
.TUE...Variable winds 5 to 15 kt. Seas 3 to 5 ft.
.TUE NIGHT...SW winds less than 10 kt. Seas 3 to 4 ft.
.WED...N to NW winds less than 10 kt. Seas 3 to 4 ft.

.WED NIGHT...NE winds 5 to 15 kt. Seas 3 to 4 ft.

.THU...E winds 10 to 20 kt. Seas 3 to 5 ft.

.THU NIGHT...E winds 10 to 20 kt. Seas 4 to 6 ft.

MARINE WEATHER HF VOICE BROADCAST: ZONE MAP



KWBC 230252

OFFN31

Marine Weather HF Voice Broadcast
NWS Ocean Prediction Center Washington DC
1052 PM EDT Sat Mar 22 2025

New England continental shelf and slope waters from 25 nm offshore to the Hague Line, except to 1000 fm south of New England.

Conditions given represent the highest within that period.

Seas given as significant wave height, which is the average height of the highest 1/3 of the waves. Individual waves may be more than twice the significant wave height.

Locally higher winds and seas can be expected in and near tstms.

.SYNOPSIS FOR NEW ENGLAND WATERS...A cold front will move across the waters tonight. High pressure will build to the coast Sun, move offshore Sun night, then shift E of the area Mon. An area of low pressure will form over the Mid-Atlantic Mon and push a warm front N across the waters, followed by the associated cold front moving SE across the area Mon night as the low lifts NE into the Gulf of Saint Lawrence. A secondary cold front or low pressure trough will move E across the waters Tue and Tue night. Low pressure will develop S of the area Tue night, then then track NE across the outer portions Wed and Wed night. High pressure will build over the waters Thu and Thu night.

Gulf of Maine to the Hague Line

...GALE WARNING...

.TONIGHT...W to SW winds 20 to 25 kt, becoming W to NW 25 to 35 kt. Seas 5 to 6 ft, building to 6 to 10 ft.

.SUN...NW winds 20 to 30 kt. Seas 6 to 11 ft.

.SUN NIGHT...NW winds 15 to 25 kt, becoming variable 5 to 15 kt. Seas 5 to 9 ft.

.MON...S winds 15 to 25 kt. Seas 5 to 8 ft. Rain with vsby 1 nm or less.

.MON NIGHT...S winds 20 to 30 kt, becoming W 5 to 15 kt. Seas 5 to 9 ft.

.TUE...W to SW winds 5 to 15 kt. Seas 4 to 7 ft.

.TUE NIGHT...W winds 10 to 20 kt. Seas 4 to 7 ft.

.WED...W winds 10 to 20 kt, becoming SW 5 to 15 kt. Seas 4 to 7 ft.

.WED NIGHT...Variable winds 5 to 15 kt, becoming N to NW 15 to 20 kt. Seas 4 to 7 ft.

.THU...NW winds 15 to 20 kt, becoming W 10 to 15 kt. Seas 4 to 7 ft.

.THU NIGHT...W winds 10 to 20 kt, becoming SW 10 to 15 kt. Seas 3 to 6 ft.

Georges Bank...from the Northeast Channel to the Great South Channel including waters east of Cape Cod...to the Hague Line

...GALE WARNING...

.TONIGHT...W to SW winds 20 to 25 kt, becoming W to NW 25 to 35 kt. Seas 6 to 10 ft.

.SUN...NW winds 20 to 30 kt. Seas 6 to 11 ft.

.SUN NIGHT...NW winds 15 to 25 kt, becoming S to SW less than 10 kt. Seas 6 to 10 ft.

.MON...S winds 20 to 30 kt. Seas 5 to 8 ft. Rain.

.MON NIGHT...S to SW winds 20 to 30 kt, becoming W to SW 10 to 20 kt. Seas 5 to 9 ft.

.TUE...W winds 5 to 15 kt, increasing to 10 to 20 kt. Seas 5 to 9 ft.

.TUE NIGHT...W winds 10 to 20 kt, becoming 10 to 15 kt. Seas 4 to 8 ft.

.WED...W to SW winds 5 to 15 kt, becoming S. Seas 4 to 7 ft.

.WED NIGHT...SE winds 10 to 20 kt, becoming NW 15 to 20 kt. Seas 5 to 9 ft.

.THU...NW winds 10 to 15 kt, becoming W. Seas 5 to 9 ft.

.THU NIGHT...W winds 10 to 15 kt. Seas 4 to 7 ft.

South of New England...from the Great South Channel to Hudson Canyon including the waters south of Marthas Vineyard and Nantucket Island...out to 1000 fm

.TONIGHT...W winds 20 to 25 kt, becoming NW 20 to 30 kt. Seas 5 to 9 ft.

.SUN...NW winds 20 to 30 kt, becoming W to NW 10 to 20 kt. Seas 6 to 10 ft.

.SUN NIGHT...W to SW winds 5 to 15 kt, becoming S 10 to 20 kt. Seas 4 to 7 ft.

.MON...S to SW winds 15 to 25 kt. Seas 4 to 7 ft. Rain.

.MON NIGHT...SW winds 10 to 20 kt, becoming W 5 to 15 kt. Seas 5 to 9 ft.

.TUE...W winds 10 to 20 kt. Seas 4 to 8 ft.

.TUE NIGHT...W winds 10 to 20 kt, diminishing to less than 10 kt. Seas 4 to 7 ft.

.WED...Variable winds 5 to 15 kt, becoming N to NE. Seas 3 to 6 ft.

.WED NIGHT...NW winds 10 to 15 kt, becoming 10 to 20 kt. Seas 4 to 8 ft.

.THU...W to NW winds 10 to 15 kt. Seas 4 to 7 ft.

.THU NIGHT...W to SW winds 10 to 20 kt. Seas 3 to 6 ft.

KWBC 230252

OFFN32

Marine Weather HF Voice Broadcast
NWS Ocean Prediction Center Washington DC
1052 PM EDT Sat Mar 22 2025

West central North Atlantic continental shelf and slope waters beyond 20 nm to 250 nm offshore, including south of Georges Bank from 1000 fm to 250 nm offshore.

Conditions given represent the highest within that period.

Seas given as significant wave height, which is the average height of the highest 1/3 of the waves. Individual waves may be more than twice the significant wave height.

Locally higher winds and seas can be expected in and near tsrms.

.SYNOPSIS FOR MID ATLC WATERS...A cold front will move across the waters tonight, stall over the S portions Sun, then return N as a warm front Sun night and Mon while a high pressure ridge builds across the southern waters. Another strong cold front will approach the coast Mon, then move across the waters Mon night into Tue. High pressure will build offshore later Tue, then shift E of the area Tue night. Low pressure will develop off the Delmarva Tue night, then track NE across the N portion Wed and Wed night while pulling a cold front SE across the central and S portions. High pressure will build to the coast Thu, then settle offshore Thu night.

Hudson Canyon to Baltimore Canyon including the waters west of 39.3N 71.9W...SW to 37.7N 72.9W

.TONIGHT...NW winds 15 to 25 kt. Seas 4 to 8 ft.

.SUN...NW winds 15 to 25 kt, diminishing to 5 to 15 kt. Seas 5 to 8 ft.

.SUN NIGHT...S winds 5 to 15 kt, becoming S to SE 10 to 20 kt. Seas 3 to 5 ft. Rain likely.

.MON...S winds 20 to 25 kt, becoming SW 15 to 25 kt. Seas 4 to 7 ft. Rain.

.MON NIGHT...W to SW winds 10 to 20 kt, becoming W to NW 10 to 15 kt. Seas 4 to 7 ft.

.TUE...W winds 10 to 15 kt. Seas 4 to 7 ft.

.TUE NIGHT...SW winds 5 to 15 kt, becoming W to SW 5 to 10 kt. Seas 3 to 5 ft.

.WED...Variable winds less than 10 kt, becoming N. Seas 3 to 5 ft.

.WED NIGHT...N to NW winds 10 to 15 kt. Seas 3 to 6 ft.

.THU...NW winds 10 to 15 kt. Seas 3 to 6 ft.

.THU NIGHT...W winds 10 to 15 kt, becoming SW. Seas 3 to 4 ft.

Baltimore Canyon to the Hague Line south of 1000 fm

...GALE WARNING...

.TONIGHT...W to NW winds 20 to 30 kt. Seas 7 to 13 ft.

.SUN...W to NW winds 20 to 30 kt. Seas 7 to 12 ft.

.SUN NIGHT...NW winds 15 to 25 kt, becoming S 5 to 15 kt. Seas 6 to 11 ft.

.MON...S winds 20 to 30 kt, increasing to 25 to 35 kt. Seas 7 to 11 ft.

.MON NIGHT...S to SW winds 25 to 35 kt. Seas 9 to 15 ft.

.TUE...SW winds 20 to 30 kt, becoming W 10 to 20 kt. Seas 8 to 14 ft.

.TUE NIGHT...W to SW winds 10 to 20 kt. Seas 6 to 10 ft.

.WED...S winds 5 to 15 kt, increasing to 15 to 25 kt. Seas 5 to 9 ft.

.WED NIGHT...W to SW winds 10 to 20 kt, becoming NW. Seas 6 to 10 ft.

.THU...NW winds 10 to 20 kt. Seas 5 to 9 ft.

.THU NIGHT...NW winds 10 to 20 kt, becoming W to NW 10 to 15 kt. Seas 4 to 8 ft.

Baltimore Canyon to Hatteras Canyon out to 36N 70W to 34N 71W

...GALE WARNING...

.TONIGHT...W winds 20 to 30 kt, becoming N to NW 15 to 25 kt. Seas 6 to 11 ft.

.SUN...N to NW winds 15 to 25 kt. Seas 5 to 9 ft.

.SUN NIGHT...SE winds 10 to 20 kt, becoming S 15 to 25 kt. Seas 4 to 7 ft.

.MON...S winds 20 to 30 kt, becoming S to SW 25 to 35 kt. Seas 6 to 11 ft.

.MON NIGHT...S to SW winds 25 to 35 kt, becoming SW 20 to 30 kt. Seas 8 to 13 ft.

.TUE...W to SW winds 15 to 25 kt, becoming W 5 to 15 kt. Seas 6 to 11 ft.

.TUE NIGHT...W to SW winds 5 to 15 kt. Seas 3 to 6 ft.

.WED...S winds 10 to 20 kt, becoming W to SW 15 to 25 kt. Seas 3 to 6 ft, building to 6 to 10 ft.

.WED NIGHT...N to NW winds 10 to 20 kt, becoming N 10 to 15 kt. Seas 5 to 9 ft.

.THU...N to NW winds 10 to 20 kt. Seas 4 to 7 ft.

.THU NIGHT...N to NW winds 10 to 20 kt, becoming W to SW 5 to 15 kt. Seas 4 to 8 ft.

Hatteras Canyon to Cape Fear out to 34N 71W to 32N 73W

.TONIGHT...W winds 15 to 25 kt. Seas 6 to 10 ft.
.SUN...N to NE winds 10 to 20 kt, diminishing to 5 to 15 kt.
Seas 4 to 7 ft.
.SUN NIGHT...S to SE winds 10 to 20 kt, becoming S to SW 15 to
25 kt. Seas 3 to 6 ft.
.MON...SW winds 20 to 30 kt. Seas 6 to 10 ft.
.MON NIGHT...W to SW winds 20 to 30 kt. Seas 6 to 11 ft.
.TUE...W to SW winds 15 to 25 kt, becoming W to NW 5 to 15 kt.
Seas 5 to 9 ft.
.TUE NIGHT...SW winds 5 to 15 kt, increasing to 10 to 20 kt.
Seas 3 to 6 ft.
.WED...S to SW winds 15 to 25 kt. Seas 5 to 8 ft.
.WED NIGHT...W to SW winds 10 to 20 kt, becoming N 5 to 15 kt.
Seas 4 to 8 ft.
.THU...N winds 10 to 20 kt. Seas 4 to 7 ft.
.THU NIGHT...N to NE winds 5 to 15 kt. Seas 4 to 7 ft.

Cape Fear to 31N out to 32N 73W to 31N 74W

.TONIGHT...W winds 15 to 25 kt. Seas 4 to 7 ft.
.SUN...N to NE winds 5 to 15 kt, becoming variable. Seas 3 to
6 ft.
.SUN NIGHT...S to SW winds 15 to 25 kt. Seas 3 to 5 ft.
.MON...S to SW winds 20 to 30 kt. Seas 5 to 8 ft.
.MON NIGHT...W to SW winds 20 to 30 kt. Seas 5 to 9 ft.
.TUE...W to NW winds 10 to 20 kt, becoming variable 5 to 15 kt.
Seas 4 to 7 ft.
.TUE NIGHT...Variable winds 5 to 15 kt. Seas 3 to 5 ft.
.WED...S to SW winds 5 to 15 kt, becoming SW 10 to 20 kt. Seas
3 to 6 ft.
.WED NIGHT...SW winds 5 to 15 kt, becoming N. Seas 3 to 6 ft.
.THU...N winds 10 to 20 kt. Seas 4 to 7 ft.
.THU NIGHT...N to NE winds 10 to 20 kt, becoming E to NE 5 to
15 kt. Seas 4 to 8 ft.