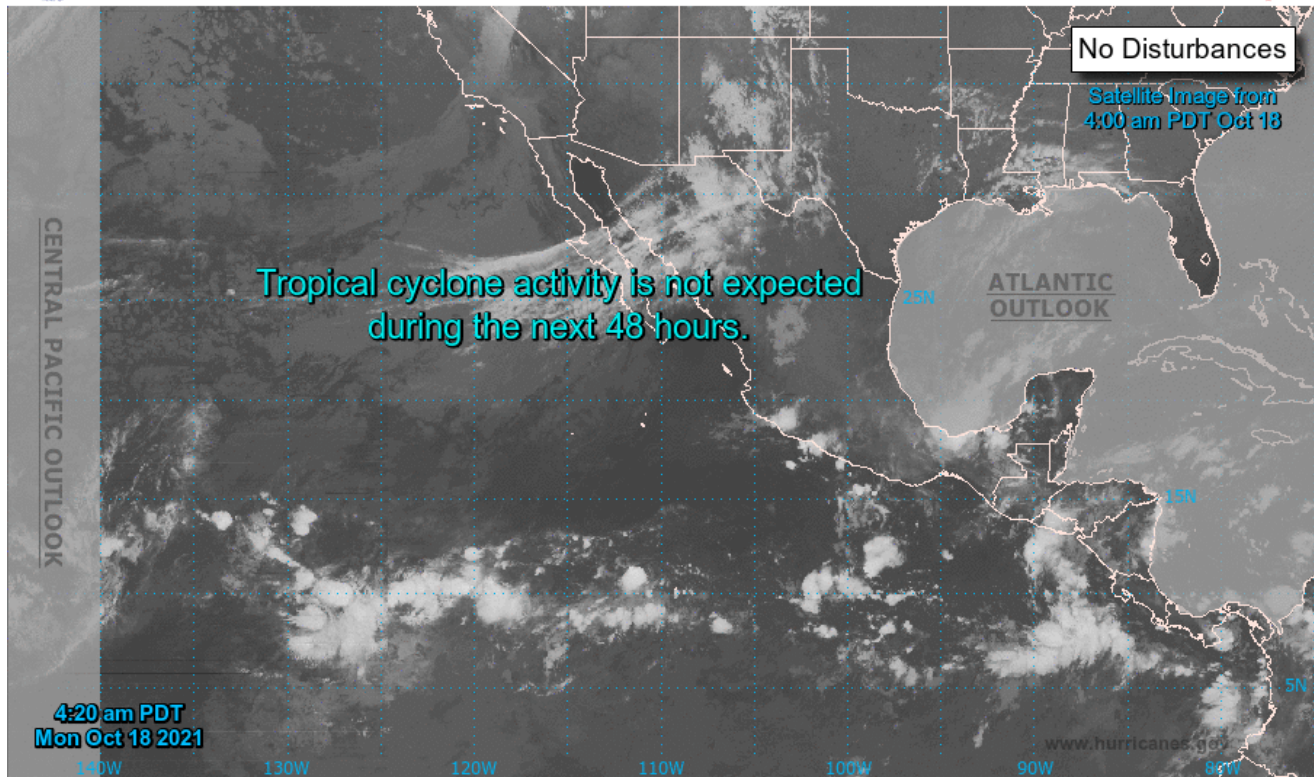




## Two-Day Graphical Tropical Weather Outlook

National Hurricane Center Miami, Florida

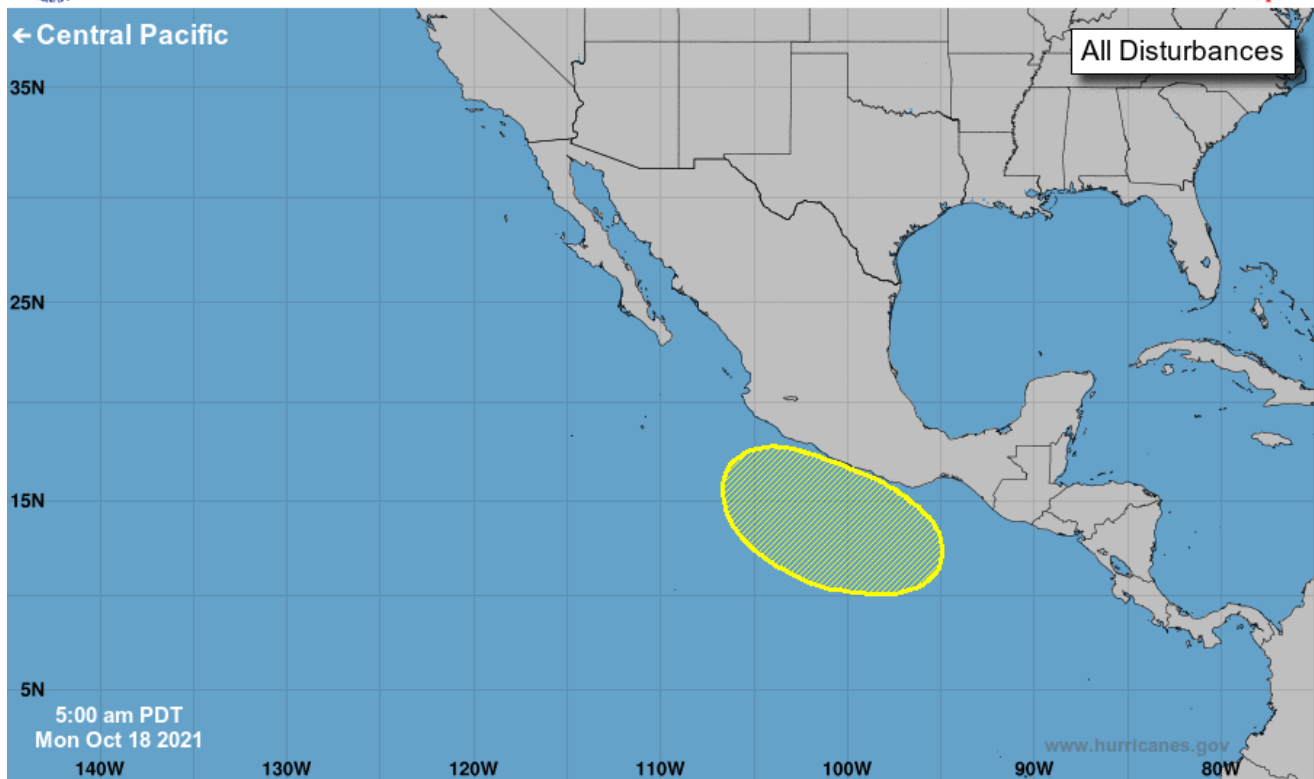


Current Disturbances and Two-Day Cyclone Formation Chance: < 40% 40-60% > 60%  
 Tropical or Sub-Tropical Cyclone: Depression Storm Hurricane  
 Post-Tropical Cyclone or Remnants



## Five-Day Graphical Tropical Weather Outlook

National Hurricane Center Miami, Florida



Current Disturbances and Five-Day Cyclone Formation Chance: < 40% 40-60% > 60%  
 Tropical or Sub-Tropical Cyclone: Depression Storm Hurricane  
 Post-Tropical Cyclone or Remnants

Tropical Weather Outlook  
NWS National Hurricane Center Miami FL  
500 AM PDT Mon Oct 18 2021

For the eastern North Pacific...east of 140 degrees west longitude:

A broad area of low pressure is expected to form in a few days a couple of hundred miles south of the coast of southern Mexico. Some gradual development of this system is possible thereafter as it moves west-northwestward off the coast of Mexico.

\* Formation chance through 48 hours...low...near 0 percent.

\* Formation chance through 5 days...low...30 percent.

Tropical Weather Discussion  
NWS National Hurricane Center Miami FL  
1005 UTC Mon Oct 18 2021

Tropical Weather Discussion for the eastern Pacific Ocean from 03.4S to 30N, east of 120W including the Gulf of California, and from the Equator to 30N, between 120W and 140W. The following information is based on satellite imagery, weather observations, radar, and meteorological analysis.

Based on 0600 UTC surface analysis and satellite imagery through 0920 UTC.

...SPECIAL FEATURES...

Gulf of Tehuantepec Gale Warning: High pressure continues to build across the Gulf of Mexico behind a frontal boundary that extends from Key Largo to the eastern Bay of Campeche. Fresh to near gale force winds in the Bay of Campeche continue to funnel across the Chivela Pass this morning, thus supporting northerly strong to gale force winds in the Tehuantepec region. Seas with these winds range between 8 to 11 ft. The front will move east of the Gulf of Mexico later this morning. This will result in a weaker pressure gradient and winds diminishing below gale force in Tehuantepec. Please see the latest High Seas Forecast at <http://nhc.noaa.gov/text/MIAHSFEP2.shtml> for more details.

...TROPICAL WAVES...

A tropical wave extends north of 02N to Guatemala with axis near 90W, moving westward at 10-15 kt. Scattered moderate convection is N of 06N between 83W and 93W.

A tropical wave extends from 03N to 15N with axis near 104W, moving westward at 10-15 kt. Scattered moderate convection is from 06N to 16N between 96W and 102W.

A tropical wave extends from 04N to 16N with axis near 121W, moving westward at 15 kt. Scattered moderate convection is from 06N to 13N between 116W and 129W.

...INTERTROPICAL CONVERGENCE ZONE/MONSOON TROUGH...

The monsoon trough axis extends from 08N79W to 11N104W to a 1012 mb low near 11N110W to 11N140W. Aside from the convection associated with the tropical waves discussed in the section above, scattered moderate convection is N of 02N E of 82W, from 08N to 12N between 108W and 114W, and from 07N to 15N W of 135W.

OFFSHORE WATERS WITHIN 250 NM OF MEXICO...

See the Special Features section above for more information on the ongoing Gale Warning for the Gulf of Tehuantepec.

A weak pressure gradient across the region is maintaining gentle to locally moderate NW winds over the Baja California peninsula offshore waters and light to gentle variable winds across the southern half of the Gulf of California and the SW Mexico offshore waters outside of the Tehuantepec area. Seas are 3 to 5 ft in mixed NW and SW swell. Over the northern Gulf of California, a surface trough is supporting fresh to locally strong SW to W winds with seas to 3 ft. Otherwise, showers and tstms are across the offshore waters of Oaxaca and Chiapas associated with the frontal boundary N of the area and a tropical wave approaching from the E.

For the forecast, gentle to moderate winds will persist into mid week and the swell will subside by Tue. By Tue night, new NW long period swell will start to move into the waters off Baja California Norte, building seas of 5 to 7 ft through Thu and to 9 ft Fri and Sat.

OFFSHORE WATERS WITHIN 250 NM OF CENTRAL AMERICA, COLOMBIA, and WITHIN 750 NM OF ECUADOR...

Latest scatterometer data continue to show light to gentle variable winds N of the monsoon trough and gentle to moderate SW winds south of it. Seas across the region are in the 4-5 ft range in SW swell. Otherwise, scattered showers and isolated thunderstorms prevails in the offshore waters of Costa Rica, Nicaragua and Guatemala due to the passage of a tropical wave.

For the forecast, a broad area of low pressure is expected to form in a few days a couple of hundred miles S of the coast of southern Mexico. Some slow development of this system is possible thereafter as it moves WNW off the coast of Mexico.

REMAINDER OF THE AREA...

Moderate to locally fresh NE winds continue over the waters N of the monsoon trough and W of 120W, with gentle to moderate winds S of the monsoon trough. Gentle to moderate N to NE winds and seas in the 5-7 ft range will change little into Tue. A NW swell expected to raise seas to 8 ft will move into the waters N of 27N between 120W-130W Tue into Wed, then subside.

Looking ahead, another round of NW swell will accompany a cold front that will move into the waters N of 28N and W of 130W Tue night, with seas in excess of 8 ft dominating the waters NW of a line from Guadalupe Island to 14N140W by late Thu.