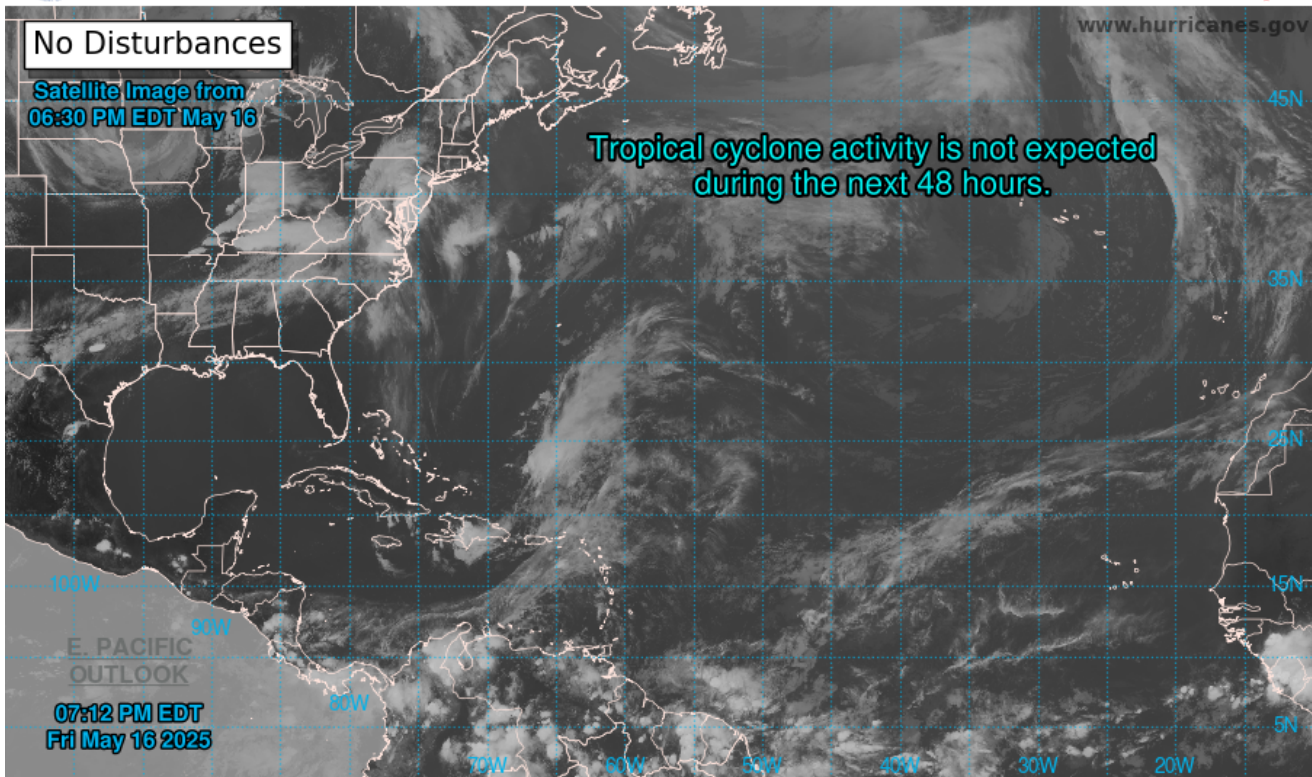




Two-Day Graphical Tropical Weather Outlook

National Hurricane Center Miami, Florida

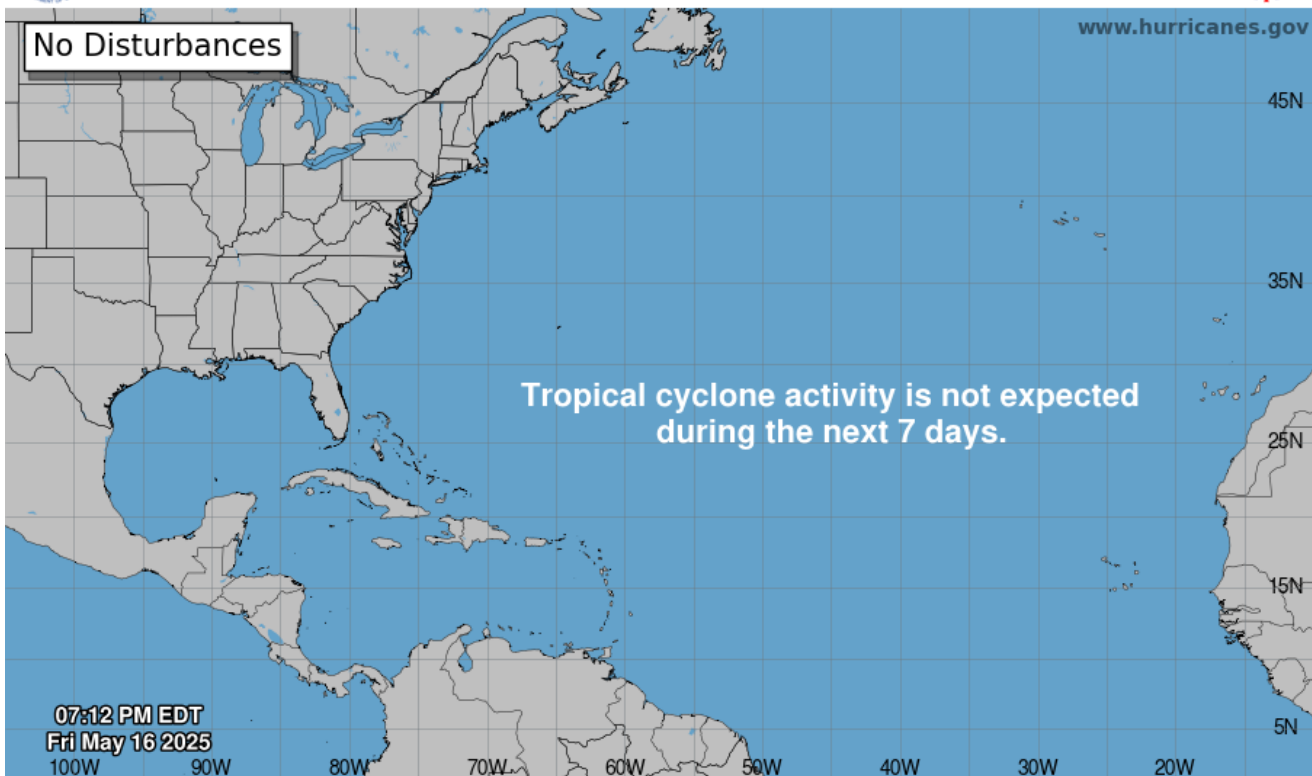


Current Disturbances and Two-Day Cyclone Formation Chance: < 40% 40-60% > 60%
 Tropical or Sub-Tropical Cyclone: Depression Storm Hurricane
 Post-Tropical Cyclone or Remnants



Seven-Day Graphical Tropical Weather Outlook

National Hurricane Center Miami, Florida



Current Disturbances and Seven-Day Cyclone Formation Chance: < 40% 40-60% > 60%
 Tropical or Sub-Tropical Cyclone: Depression Storm Hurricane
 Post-Tropical Cyclone or Remnants

Tropical Weather Outlook
NWS National Hurricane Center Miami FL
800 PM EDT Fri May 16 2025

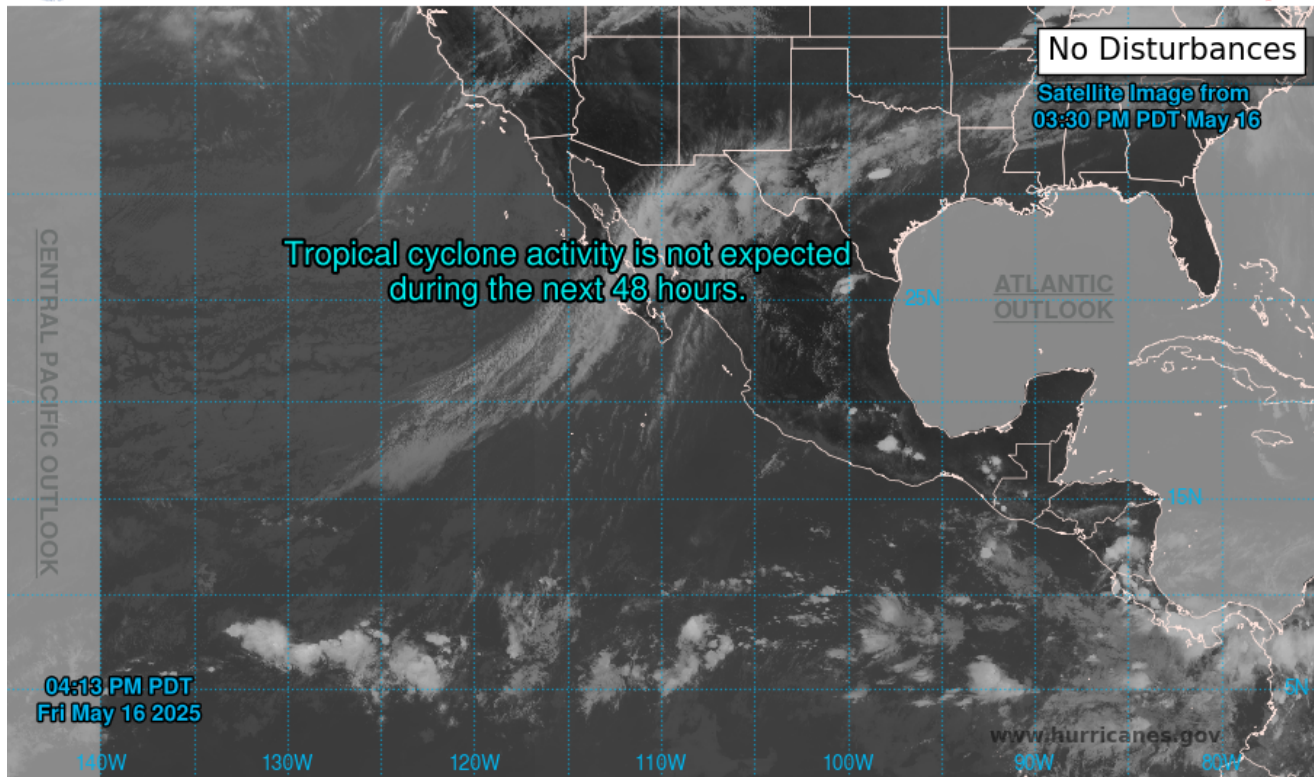
For the North Atlantic...Caribbean Sea and the Gulf of America:

Tropical cyclone formation is not expected during the next 7 days.



Two-Day Graphical Tropical Weather Outlook

National Hurricane Center Miami, Florida



Current Disturbances and Two-Day Cyclone Formation Chance: < 40% 40-60% > 60%
 Tropical or Sub-Tropical Cyclone: Depression Storm Hurricane
 Post-Tropical Cyclone or Remnants



Seven-Day Graphical Tropical Weather Outlook

National Hurricane Center Miami, Florida



Current Disturbances and Seven-Day Cyclone Formation Chance: < 40% 40-60% > 60%
 Tropical or Sub-Tropical Cyclone: Depression Storm Hurricane
 Post-Tropical Cyclone or Remnants

Tropical Weather Outlook
NWS National Hurricane Center Miami FL
500 PM PDT Fri May 16 2025

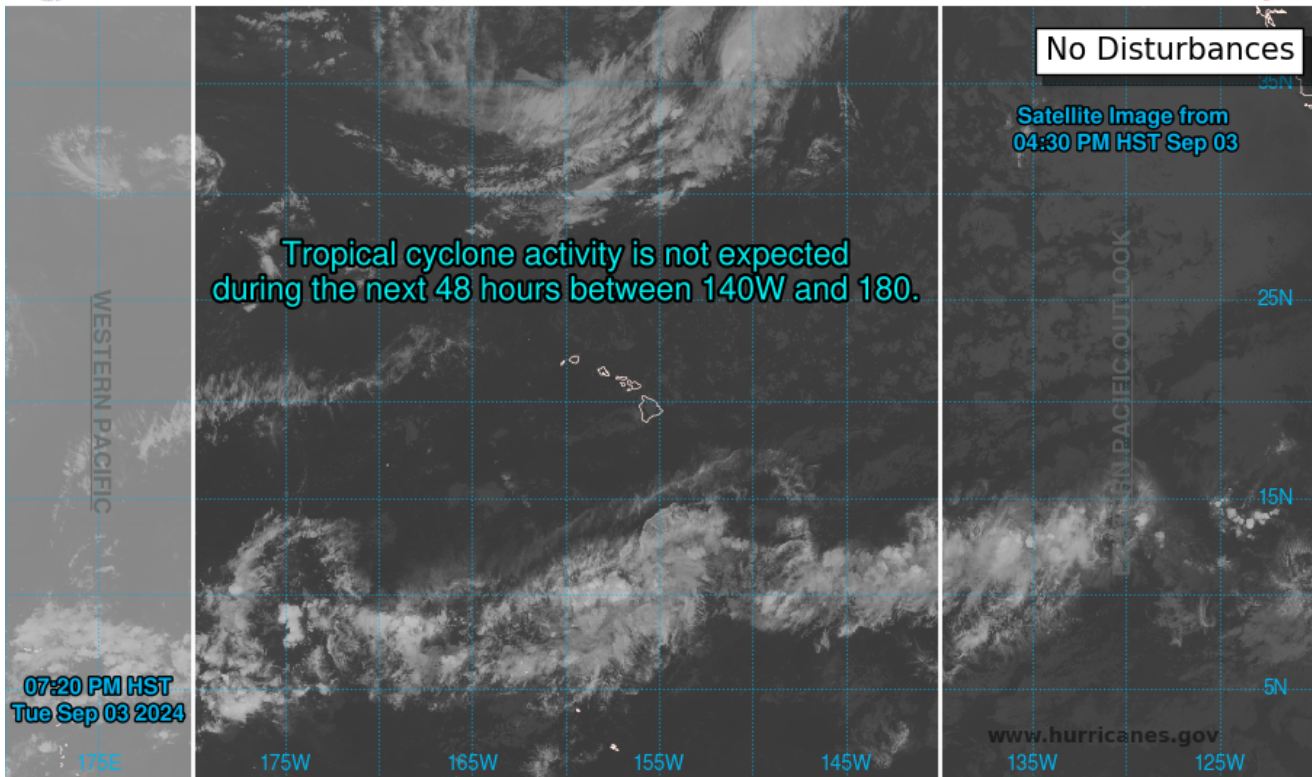
For the eastern North Pacific...east of 140 degrees west longitude:

Tropical cyclone formation is not expected during the next 7 days.



Two-Day Graphical Tropical Weather Outlook

Central Pacific Hurricane Center Honolulu, Hawaii

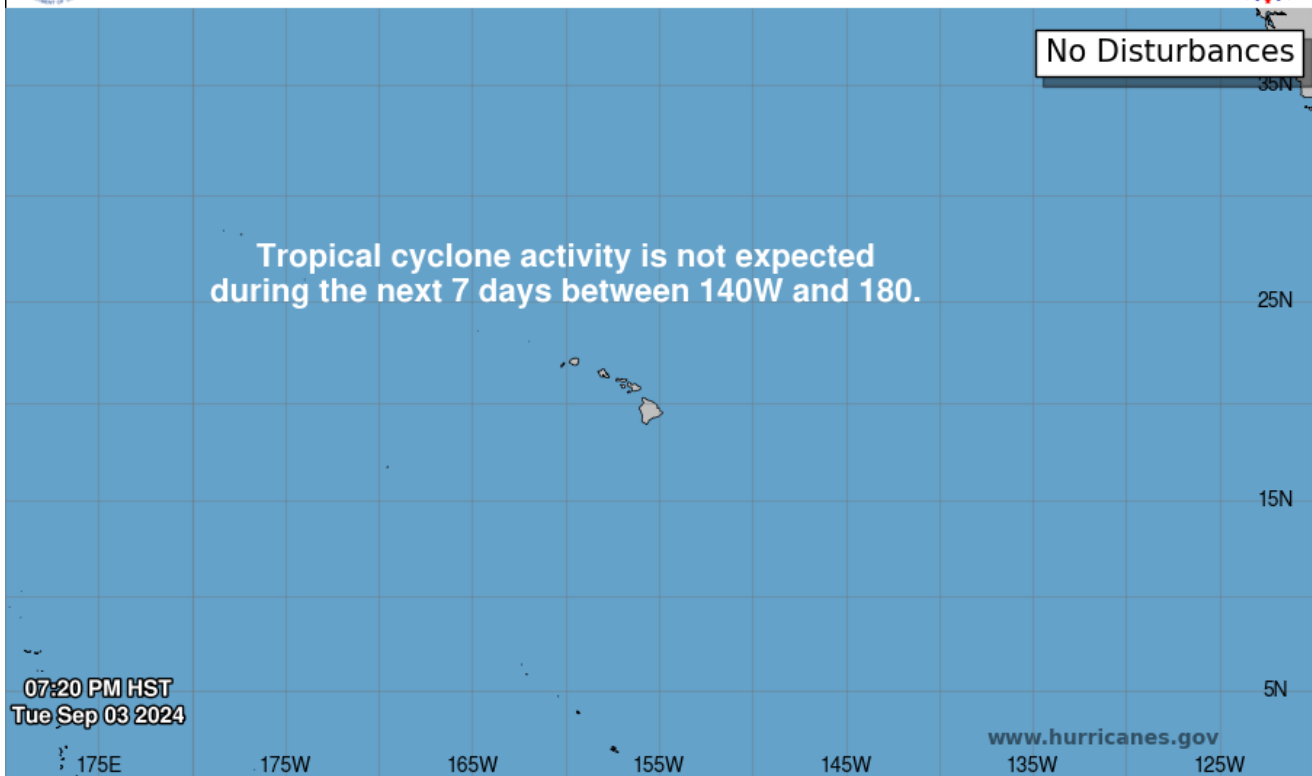


Current Disturbances and Two-Day Cyclone Formation Chance: < 40% 40-60% > 60%
 Tropical or Sub-Tropical Cyclone: Depression Storm Hurricane
 Post-Tropical Cyclone or Remnants



Seven-Day Graphical Tropical Weather Outlook

Central Pacific Hurricane Center Honolulu, Hawaii



Current Disturbances and Two-Day Cyclone Formation Chance: < 40% 40-60% > 60%
 Tropical or Sub-Tropical Cyclone: Depression Storm Hurricane
 Post-Tropical Cyclone or Remnants

Tropical Weather Outlook
NWS Central Pacific Hurricane Center Honolulu HI
800 PM HST Sat Nov 30 2024

For the central North Pacific...between 140W and 180W:

No tropical cyclones are expected during the next 7 days.

The 2024 central North Pacific hurricane season officially ends today, November 30. As such, this is the final routine Tropical Weather Outlook for the 2024 season in general, and for this forecaster in particular. Routine issuance of the Tropical Weather Outlook will resume on June 1, 2025. During the off-season, Special Tropical Weather Outlooks will be issued as conditions warrant.