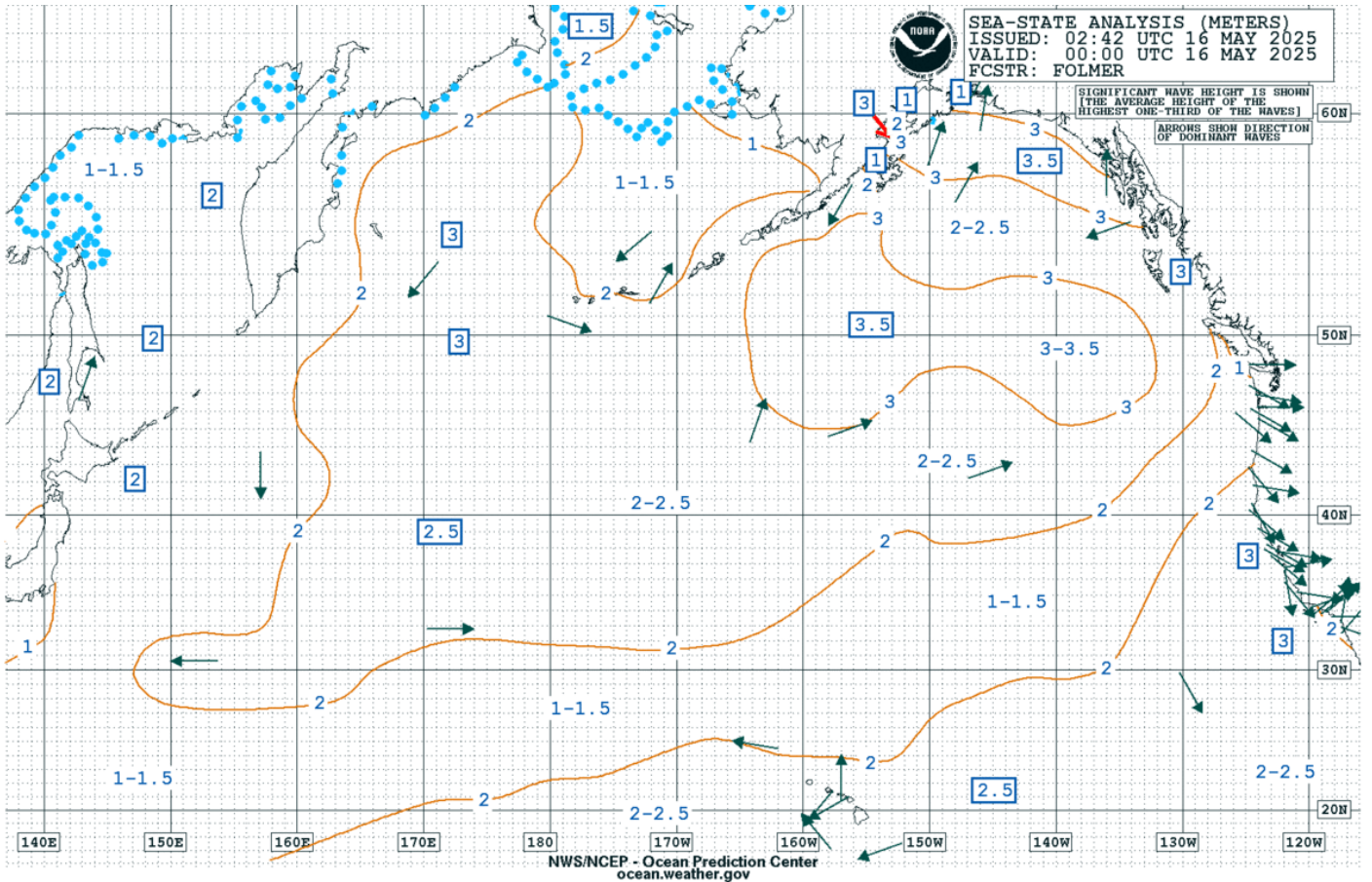
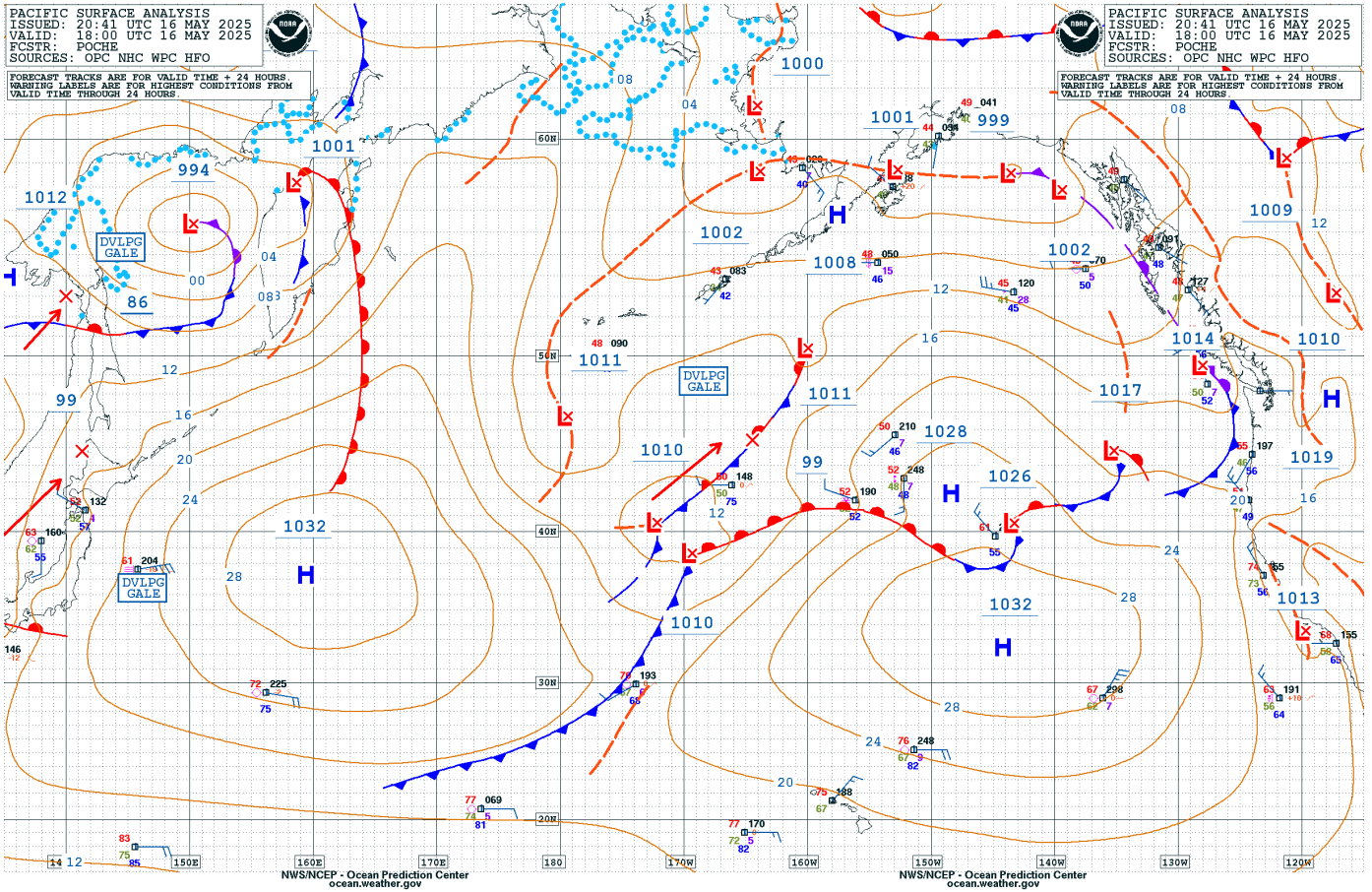
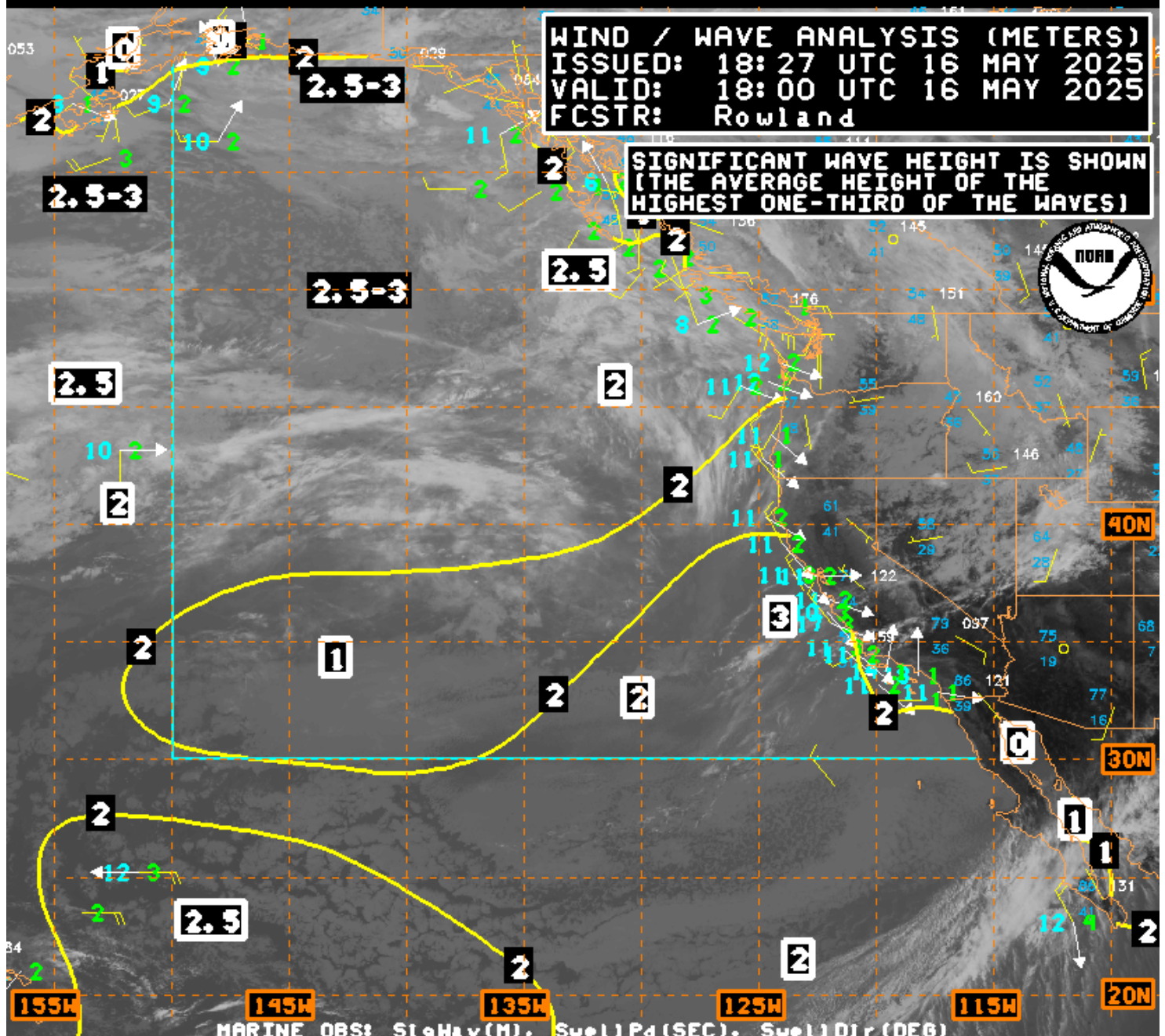


# PACIFIC OCEAN ANALYSIS



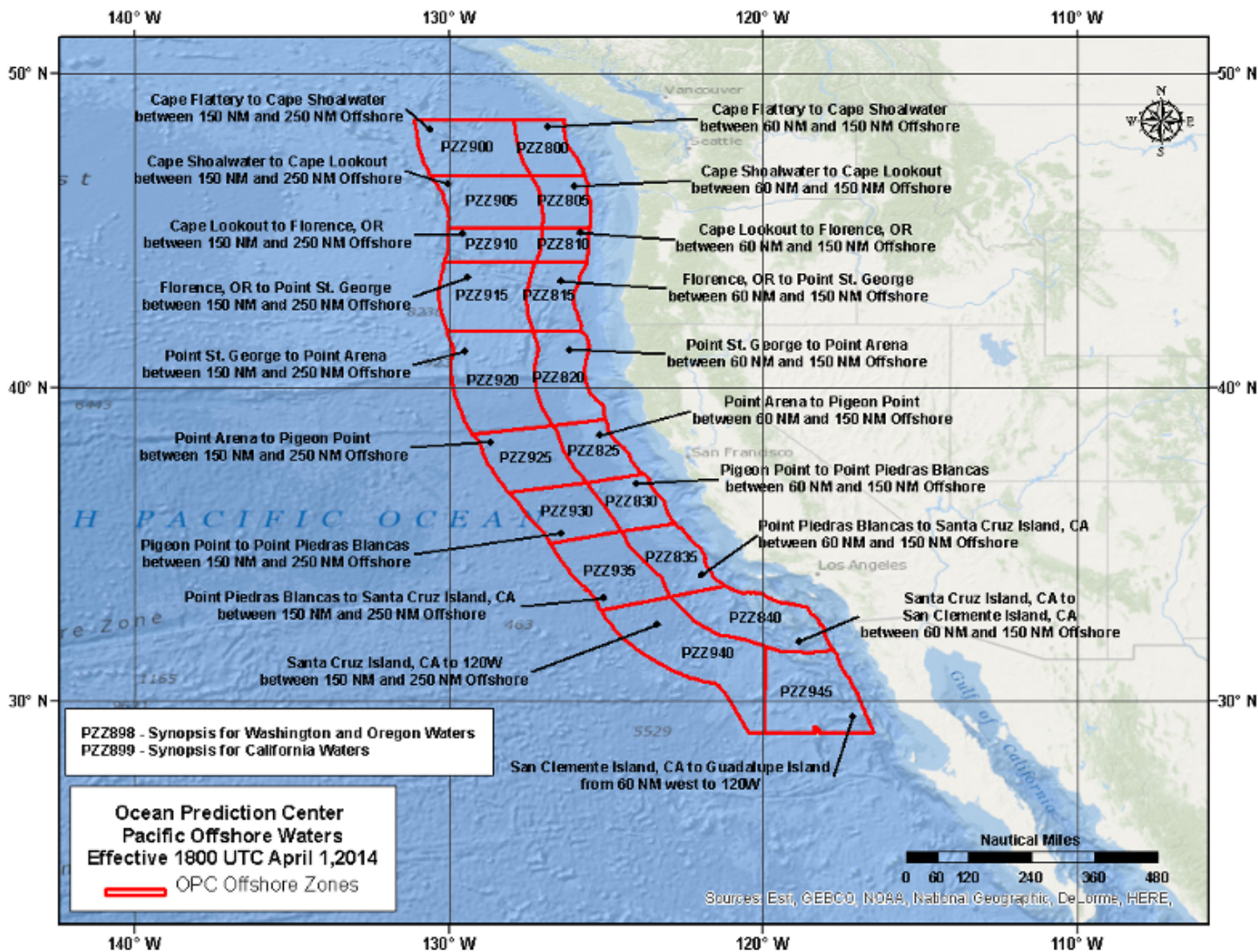
**WIND / WAVE ANALYSIS (METERS)**  
ISSUED: 18:27 UTC 16 MAY 2025  
VALID: 18:00 UTC 16 MAY 2025  
FCSTR: Rowland

**SIGNIFICANT WAVE HEIGHT IS SHOWN  
(THE AVERAGE HEIGHT OF THE  
HIGHEST ONE-THIRD OF THE WAVES)**



MARINE OBS: SigHav(M), SwellPd(SEC), SwellDir(DEG)  
NWS/NCEP - Ocean Prediction Center  
ocean.weather.gov

# OFFSHORE WATERS FORECAST: ZONE MAP



KWBC 162125

OFFPZ5

Offshore Waters Forecast

NWS Ocean Prediction Center Washington DC

225 PM PDT Fri May 16 2025

Washington and Oregon waters-

Inner waters from 60 nm to 150 nm offshore.

Outer waters from 150 nm to 250 nm offshore.

Seas given as significant wave height, which is the average height of the highest 1/3 of the waves. Individual waves may be more than twice the significant wave height.

PZZ898-171030-

225 PM PDT Fri May 16 2025

.SYNOPSIS FOR WASHINGTON AND OREGON WATERS...A cold front moving slowly through the inner waters will stall and eventually dissipate near the coast by this evening. Another cold front will move into the waters tonight and move E and SE across the area and out of the area by early Sat morning. High pressure will build in from the W behind the cold front and settle over the waters through Sun. The area of high pressure will move E of the waters Sun night as a warm front crosses the waters followed by a cold front moving E and SE over the area Mon and exiting the region by Mon night. On Tue and Tue night high pressure will be building E over the region and gradually moving over the waters Wed and Wed night.

PZZ800-171030-

Cape Flattery to Cape Shoalwater between 60 NM and 150 NM offshore-

225 PM PDT Fri May 16 2025

.TONIGHT...W winds 5 to 10 kt, becoming W to NW 5 to 15 kt. Seas 6 to 8 ft. Chance of rain.

.SAT...NW winds 10 to 20 kt. Seas 6 to 8 ft.

.SAT NIGHT...NW winds 15 to 25 kt. Seas 8 to 9 ft.

.SUN...NW winds 10 to 20 kt, becoming W 5 to 15 kt. Seas 6 to 9 ft.

.SUN NIGHT...S winds 15 to 25 kt. Seas 6 to 7 ft.

.MON...W to SW winds 10 to 20 kt. Seas 6 to 9 ft.

.MON NIGHT...W to SW winds 10 to 20 kt. Seas 7 to 12 ft.

.TUE...W winds 10 to 20 kt, becoming 10 to 15 kt. Seas 10 to 12 ft.

.TUE NIGHT...W winds 10 to 15 kt, becoming NW 5 to 10 kt. Seas

8 to 10 ft.

.WED...NW winds 5 to 10 kt. Seas 6 to 8 ft.

.WED NIGHT...NW winds 10 to 15 kt. Seas 5 to 7 ft.

PZZ900-171030-

Cape Flattery to Cape Shoalwater between 150 NM and 250 NM offshore-

225 PM PDT Fri May 16 2025

.TONIGHT...W winds 5 to 10 kt, increasing to 10 to 15 kt early, then, becoming NW 10 to 20 kt. Seas 6 to 8 ft. Chance of rain.

.SAT...NW winds 15 to 20 kt. Seas 6 to 8 ft.

.SAT NIGHT...NW winds 10 to 20 kt. Seas 6 to 9 ft.

.SUN...W to NW winds 5 to 15 kt, becoming S 10 to 20 kt. Seas 6 to 8 ft.

.SUN NIGHT...S to SW winds 15 to 25 kt. Seas 6 to 8 ft.

.MON...W to SW winds 15 to 25 kt. Seas 8 to 14 ft.

.MON NIGHT...W winds 15 to 25 kt. Seas 9 to 15 ft.

.TUE...W winds 10 to 20 kt. Seas 10 to 14 ft.

.TUE NIGHT...W winds 10 to 15 kt. Seas 8 to 10 ft.

.WED...W to NW winds 10 to 15 kt. Seas 6 to 8 ft.

.WED NIGHT...NW winds 10 to 15 kt. Seas 5 to 6 ft.

PZZ805-171030-

Cape Shoalwater to Cape Lookout between 60 NM and 150 NM offshore-

225 PM PDT Fri May 16 2025

.TONIGHT...W to SW winds 5 to 10 kt, becoming W to NW 5 to 15 kt. Seas 6 to 8 ft. Chance of rain.

.SAT...NW winds 15 to 20 kt. Seas 6 to 8 ft. Chance of rain.

.SAT NIGHT...NW winds 15 to 20 kt. Seas 7 to 8 ft.

.SUN...NW winds 10 to 20 kt, becoming W 5 to 10 kt. Seas 6 to 8 ft.

.SUN NIGHT...S winds 15 to 25 kt. Seas 6 to 7 ft.

.MON...W winds 10 to 20 kt. Seas 6 to 8 ft.

.MON NIGHT...W winds 15 to 20 kt, diminishing to 10 to 15 kt. Seas 7 to 12 ft.

.TUE...W winds 10 to 15 kt. Seas 10 to 12 ft.

.TUE NIGHT...W to NW winds 10 to 15 kt, becoming NW 5 to 10 kt. Seas 8 to 10 ft.

.WED...N to NW winds 5 to 10 kt. Seas 6 to 8 ft.

.WED NIGHT...N to NW winds 10 to 15 kt. Seas 5 to 7 ft.

PZZ905-171030-

Cape Shoalwater to Cape Lookout between 150 NM and 250 NM offshore-

225 PM PDT Fri May 16 2025

.TONIGHT...W winds 5 to 10 kt, becoming W to NW 10 to 15 kt early, then, becoming NW 10 to 20 kt. Seas 6 to 8 ft. Chance of rain.

.SAT...NW winds 15 to 20 kt. Seas 7 to 8 ft.

.SAT NIGHT...NW winds 10 to 20 kt. Seas 6 to 8 ft.

.SUN...W winds 5 to 15 kt, becoming S. Seas 6 to 7 ft.

.SUN NIGHT...S winds 10 to 20 kt, becoming W to SW 15 to 20 kt. Seas 6 to 8 ft.

.MON...W winds 15 to 25 kt. Seas 8 to 13 ft.

.MON NIGHT...W winds 15 to 20 kt. Seas 8 to 14 ft.

.TUE...W winds 10 to 20 kt, becoming 10 to 15 kt. Seas 10 to 13 ft.

.TUE NIGHT...W to NW winds 10 to 15 kt, becoming NW 5 to 10 kt. Seas 8 to 10 ft.

.WED...NW winds 5 to 10 kt, increasing to 10 to 15 kt. Seas 6 to 8 ft.

.WED NIGHT...NW winds 10 to 15 kt. Seas 5 to 6 ft.

PZZ810-171030-

Cape Lookout to Florence, OR between 60 NM and 150 NM offshore-  
225 PM PDT Fri May 16 2025

.TONIGHT...W winds 5 to 10 kt, increasing to 10 to 15 kt early, then, becoming NW. Seas 6 to 8 ft. Chance of rain.

.SAT...NW winds 15 to 20 kt. Seas 6 to 8 ft.

.SAT NIGHT...NW winds 15 to 20 kt, diminishing to 10 to 15 kt. Seas 7 to 8 ft.

.SUN...NW winds 10 to 15 kt, becoming W to SW 5 to 10 kt. Seas 6 to 7 ft.

.SUN NIGHT...S to SW winds 10 to 15 kt, becoming 10 to 20 kt. Seas 5 to 7 ft.

.MON...W winds 15 to 20 kt, diminishing to 10 to 15 kt. Seas 5 to 7 ft.

.MON NIGHT...W winds 10 to 15 kt. Seas 6 to 11 ft.

.TUE...W to NW winds 10 to 15 kt, becoming NW 5 to 10 kt. Seas 10 to 11 ft.

.TUE NIGHT...N to NW winds 10 to 15 kt. Seas 8 to 10 ft.

.WED...N winds 10 to 15 kt. Seas 6 to 8 ft.

.WED NIGHT...N winds 10 to 15 kt. Seas 5 to 7 ft.

PZZ910-171030-

Cape Lookout to Florence, OR between 150 NM and 250 NM offshore-  
225 PM PDT Fri May 16 2025

.TONIGHT...W to NW winds 10 to 15 kt, becoming NW 10 to 20 kt. Seas 6 to 8 ft. Chance of rain.

.SAT...NW winds 15 to 20 kt. Seas 7 to 8 ft.  
.SAT NIGHT...NW winds 15 to 20 kt, diminishing to 10 to 15 kt.  
Seas 6 to 8 ft.  
.SUN...W to NW winds 5 to 15 kt, becoming S to SW. Seas 6 to  
7 ft.  
.SUN NIGHT...SW winds 10 to 15 kt, becoming W to SW 10 to 20 kt.  
Seas 5 to 7 ft.  
.MON...W winds 15 to 20 kt. Seas 6 to 11 ft.  
.MON NIGHT...W winds 15 to 20 kt, diminishing to 10 to 15 kt.  
Seas 7 to 13 ft.  
.TUE...W winds 10 to 15 kt, diminishing to 5 to 10 kt. Seas  
10 to 12 ft.  
.TUE NIGHT...N to NW winds 5 to 10 kt. Seas 8 to 9 ft.  
.WED...N to NW winds 5 to 10 kt, increasing to 10 to 15 kt. Seas  
6 to 8 ft.  
.WED NIGHT...N to NW winds 10 to 15 kt. Seas 5 to 6 ft.

PZZ815-171030-

Florence, OR to Point St. George between 60 NM and 150 NM  
offshore-  
225 PM PDT Fri May 16 2025

.TONIGHT...W winds 5 to 10 kt, becoming W to NW 10 to 15 kt.  
Seas 5 to 7 ft.  
.SAT...N to NW winds 10 to 20 kt. Seas 6 to 7 ft. Chance of  
rain.  
.SAT NIGHT...N to NW winds 15 to 20 kt. Seas 7 to 8 ft.  
.SUN...NW winds 10 to 15 kt, becoming W to SW 5 to 10 kt. Seas  
6 to 7 ft.  
.SUN NIGHT...S to SW winds 5 to 15 kt, becoming W to SW. Seas  
5 to 7 ft.  
.MON...W winds 5 to 15 kt, becoming NW 10 to 15 kt. Seas 5 to  
7 ft.  
.MON NIGHT...NW winds 10 to 15 kt. Seas 6 to 10 ft.  
.TUE...N to NW winds 10 to 15 kt. Seas 8 to 11 ft.  
.TUE NIGHT...N winds 15 to 25 kt. Seas 8 to 10 ft.  
.WED...N winds 15 to 25 kt. Seas 6 to 9 ft.  
.WED NIGHT...N winds 10 to 20 kt. Seas 5 to 8 ft.

PZZ915-171030-

Florence, OR to Point St. George between 150 NM and 250 NM  
offshore-  
225 PM PDT Fri May 16 2025

.TONIGHT...W winds 10 to 15 kt, becoming NW 10 to 20 kt. Seas  
6 to 7 ft. Chance of rain.  
.SAT...N to NW winds 15 to 20 kt. Seas 6 to 8 ft.  
.SAT NIGHT...NW winds 15 to 20 kt, diminishing to 10 to 15 kt.

Seas 6 to 8 ft.

.SUN...W to NW winds 10 to 15 kt, becoming SW 5 to 15 kt. Seas 6 to 7 ft.

.SUN NIGHT...W to SW winds 10 to 15 kt, becoming W 10 to 20 kt. Seas 5 to 7 ft.

.MON...W to NW winds 10 to 20 kt. Seas 5 to 9 ft.

.MON NIGHT...W to NW winds 15 to 20 kt, becoming NW 10 to 15 kt. Seas 7 to 12 ft.

.TUE...N to NW winds 10 to 15 kt. Seas 9 to 12 ft.

.TUE NIGHT...N to NW winds 10 to 15 kt, becoming N 10 to 20 kt. Seas 7 to 9 ft.

.WED...N winds 10 to 15 kt. Seas 6 to 8 ft.

.WED NIGHT...N winds 10 to 15 kt. Seas 5 to 7 ft.



KWBC 162146

OFFPZ6

Offshore Waters Forecast

NWS Ocean Prediction Center Washington DC

246 PM PDT Fri May 16 2025

California waters-

Inner waters from 60 nm to 150 nm offshore.

Outer waters from 150 nm to 250 nm offshore.

Seas given as significant wave height, which is the average height of the highest 1/3 of the waves. Individual waves may be more than twice the significant wave height.

PZZ899-171100-

246 PM PDT Fri May 16 2025

.SYNOPSIS FOR CALIFORNIA WATERS...High pressure will be centered well to the W of the N and central waters tonight and Sat. A cold front will move S over the N and central waters tonight through Sat, then over the S waters later Sat and Sat night. A coastal trough will persist along central and S California tonight and weaken through early Sat. The area of high pressure will build E to SE over the N and central waters behind the cold front later Sat and Sat night through Mon night. A coastal trough will redevelop and expand along the entire coast Sat night and Sun while strengthening especially over the central and S areas from Sun night into Mon night then persisting along much of the coast Tue through Wed night. The center of high pressure will move closer to the N and central waters later Mon night and then move to the N and NW of the region Tue and Tue night and persist over this area through Wed night.

PZZ820-171100-

Point St. George to Point Arena between 60 NM and 150 NM offshore-

246 PM PDT Fri May 16 2025

.TONIGHT...NW winds 10 to 20 kt. Seas 5 to 7 ft.

.SAT...NW winds 10 to 20 kt, becoming N. Seas 6 to 7 ft. Chance of rain.

.SAT NIGHT...N winds 15 to 25 kt. Seas 7 to 9 ft.

.SUN...N winds 15 to 25 kt. Seas 6 to 10 ft.

.SUN NIGHT...W to NW winds 15 to 25 kt. Seas 5 to 9 ft.

.MON...NW winds 5 to 15 kt, increasing to 10 to 20 kt. Seas 5 to 7 ft.

.MON NIGHT...N to NW winds 15 to 25 kt. Seas 5 to 8 ft.

.TUE...N winds 20 to 30 kt. Seas 7 to 11 ft.  
.TUE NIGHT...N winds 20 to 30 kt. Seas 8 to 12 ft.  
.WED...N winds 15 to 25 kt. Seas 7 to 11 ft.  
.WED NIGHT...N winds 15 to 25 kt. Seas 6 to 10 ft.

PZZ920-171100-

Point St. George to Point Arena between 150 NM and 250 NM  
offshore-

246 PM PDT Fri May 16 2025

.TONIGHT...W to NW winds 5 to 15 kt, increasing to 10 to 20 kt.  
Seas 5 to 7 ft.  
.SAT...N to NW winds 10 to 20 kt. Seas 6 to 8 ft.  
.SAT NIGHT...N to NW winds 10 to 20 kt. Seas 6 to 8 ft.  
.SUN...N to NW winds 10 to 20 kt, becoming W to NW 10 to 15 kt.  
Seas 5 to 8 ft.  
.SUN NIGHT...W winds 10 to 15 kt. Seas 5 to 6 ft.  
.MON...W to NW winds 10 to 15 kt. Seas 4 to 6 ft.  
.MON NIGHT...NW winds 10 to 15 kt, becoming N 10 to 20 kt. Seas  
7 to 11 ft.  
.TUE...N winds 10 to 20 kt. Seas 7 to 11 ft.  
.TUE NIGHT...N winds 15 to 25 kt. Seas 7 to 10 ft.  
.WED...N winds 15 to 25 kt. Seas 6 to 10 ft.  
.WED NIGHT...N winds 10 to 20 kt. Seas 5 to 9 ft.

PZZ825-171100-

Point Arena to Pigeon Point between 60 NM and 150 NM offshore-  
246 PM PDT Fri May 16 2025

.TONIGHT...NW winds 15 to 25 kt. Seas 5 to 9 ft.  
.SAT...NW winds 10 to 20 kt. Seas 6 to 8 ft.  
.SAT NIGHT...N to NW winds 20 to 30 kt. Seas 7 to 12 ft.  
.SUN...N to NW winds 20 to 30 kt. Seas 7 to 12 ft.  
.SUN NIGHT...NW winds 20 to 30 kt. Seas 7 to 12 ft.  
.MON...N to NW winds 20 to 30 kt. Seas 6 to 10 ft.  
.MON NIGHT...N to NW winds 20 to 30 kt. Seas 6 to 10 ft.  
.TUE...N winds 20 to 30 kt. Seas 7 to 11 ft.  
.TUE NIGHT...N winds 20 to 30 kt. Seas 10 to 13 ft.  
.WED...N winds 20 to 25 kt. Seas 9 to 13 ft.  
.WED NIGHT...N winds 20 to 30 kt. Seas 8 to 12 ft.

PZZ925-171100-

Point Arena to Pigeon Point between 150 NM and 250 NM offshore-  
246 PM PDT Fri May 16 2025

.TONIGHT...NW winds 10 to 20 kt. Seas 5 to 7 ft.  
.SAT...NW winds 10 to 20 kt, becoming N. Seas 6 to 7 ft. Chance

of rain.

.SAT NIGHT...N winds 15 to 25 kt. Seas 6 to 9 ft.  
.SUN...N winds 15 to 25 kt. Seas 6 to 10 ft.  
.SUN NIGHT...N to NW winds 15 to 25 kt. Seas 5 to 9 ft.  
.MON...N to NW winds 10 to 20 kt. Seas 4 to 7 ft.  
.MON NIGHT...N to NW winds 10 to 20 kt. Seas 4 to 7 ft.  
.TUE...N winds 15 to 25 kt. Seas 6 to 10 ft.  
.TUE NIGHT...N winds 15 to 25 kt. Seas 8 to 11 ft.  
.WED...N winds 15 to 25 kt. Seas 7 to 11 ft.  
.WED NIGHT...N winds 15 to 25 kt. Seas 6 to 10 ft.

PZZ830-171100-

Pigeon Point to Point Piedras Blancas between 60 NM and 150 NM offshore-

246 PM PDT Fri May 16 2025

.TONIGHT...NW winds 15 to 25 kt. Seas 6 to 10 ft.  
.SAT...NW winds 15 to 25 kt. Seas 6 to 9 ft.  
.SAT NIGHT...NW winds 20 to 30 kt. Seas 7 to 12 ft.  
.SUN...N to NW winds 25 to 30 kt. Seas 9 to 13 ft.  
.SUN NIGHT...NW winds 20 to 30 kt. Seas 8 to 12 ft.  
.MON...N to NW winds 20 to 30 kt. Seas 7 to 12 ft.  
.MON NIGHT...NW winds 20 to 25 kt, becoming N. Seas 6 to 10 ft.  
.TUE...N to NW winds 20 to 30 kt. Seas 8 to 11 ft.  
.TUE NIGHT...N winds 20 to 30 kt. Seas 10 to 13 ft.  
.WED...N to NW winds 20 to 30 kt. Seas 11 to 13 ft.  
.WED NIGHT...N to NW winds 20 to 30 kt. Seas 10 to 12 ft.

PZZ930-171100-

Pigeon Point to Point Piedras Blancas between 150 NM and 250 NM offshore-

246 PM PDT Fri May 16 2025

.TONIGHT...NW winds 10 to 20 kt. Seas 5 to 9 ft.  
.SAT...N to NW winds 10 to 20 kt. Seas 6 to 7 ft.  
.SAT NIGHT...N winds 15 to 25 kt. Seas 6 to 10 ft.  
.SUN...N winds 15 to 25 kt. Seas 7 to 11 ft.  
.SUN NIGHT...N winds 15 to 25 kt. Seas 6 to 11 ft.  
.MON...N winds 20 to 30 kt. Seas 6 to 11 ft.  
.MON NIGHT...N winds 15 to 25 kt. Seas 5 to 9 ft.  
.TUE...N winds 15 to 25 kt. Seas 6 to 10 ft.  
.TUE NIGHT...N winds 20 to 25 kt. Seas 9 to 12 ft.  
.WED...N winds 20 to 25 kt. Seas 9 to 12 ft.  
.WED NIGHT...N winds 20 to 25 kt. Seas 8 to 11 ft.

PZZ835-171100-

Point Piedras Blancas to Santa Cruz Island, CA between 60 NM and

150 NM offshore-  
246 PM PDT Fri May 16 2025

.TONIGHT...NW winds 15 to 25 kt. Seas 8 to 9 ft.  
.SAT...NW winds 15 to 25 kt. Seas 6 to 9 ft.  
.SAT NIGHT...NW winds 20 to 30 kt. Seas 6 to 10 ft.  
.SUN...N to NW winds 20 to 30 kt. Seas 8 to 12 ft.  
.SUN NIGHT...NW winds 25 to 30 kt. Seas 11 to 12 ft.  
.MON...N winds 20 to 30 kt. Seas 9 to 12 ft.  
.MON NIGHT...N winds 20 to 30 kt. Seas 8 to 12 ft.  
.TUE...N to NW winds 20 to 25 kt. Seas 9 to 11 ft.  
.TUE NIGHT...N winds 20 to 25 kt. Seas 9 to 11 ft.  
.WED...N winds 20 to 25 kt. Seas 9 to 12 ft.  
.WED NIGHT...N winds 20 to 25 kt. Seas 9 to 11 ft.

PZZ935-171100-  
Point Piedras Blancas to Santa Cruz Island, CA between 150 NM  
and 250 NM offshore-  
246 PM PDT Fri May 16 2025

.TONIGHT...N to NW winds 15 to 20 kt. Seas 6 to 9 ft.  
.SAT...NW winds 10 to 20 kt, becoming 10 to 15 kt. Seas 6 to  
8 ft.  
.SAT NIGHT...N to NW winds 15 to 25 kt. Seas 6 to 9 ft.  
.SUN...N winds 20 to 25 kt. Seas 8 to 12 ft.  
.SUN NIGHT...N winds 20 to 25 kt. Seas 8 to 12 ft.  
.MON...N winds 20 to 30 kt. Seas 7 to 12 ft.  
.MON NIGHT...N winds 15 to 25 kt. Seas 6 to 11 ft.  
.TUE...N winds 20 to 25 kt. Seas 7 to 10 ft.  
.TUE NIGHT...N winds 20 to 25 kt. Seas 9 to 11 ft.  
.WED...N winds 20 to 25 kt. Seas 10 to 12 ft.  
.WED NIGHT...N winds 20 to 25 kt. Seas 9 to 11 ft.

PZZ840-171100-  
Santa Cruz Island, CA to San Clemente Island, CA between 60 NM  
and 150 NM offshore-  
246 PM PDT Fri May 16 2025

.TONIGHT...NW winds 15 to 25 kt. Seas 5 to 9 ft.  
.SAT...NW winds 10 to 20 kt. Seas 5 to 9 ft.  
.SAT NIGHT...NW winds 20 to 30 kt. Seas 6 to 9 ft.  
.SUN...NW winds 20 to 30 kt. Seas 7 to 12 ft.  
.SUN NIGHT...NW winds 20 to 30 kt. Seas 7 to 12 ft.  
.MON...N to NW winds 15 to 25 kt. Seas 7 to 12 ft.  
.MON NIGHT...N to NW winds 15 to 25 kt. Seas 7 to 11 ft.  
.TUE...N to NW winds 15 to 25 kt. Seas 6 to 11 ft.  
.TUE NIGHT...N to NW winds 15 to 25 kt. Seas 6 to 10 ft.  
.WED...N to NW winds 15 to 25 kt. Seas 6 to 11 ft.

.WED NIGHT...NW winds 10 to 20 kt. Seas 6 to 11 ft.

PZZ940-171100-

Santa Cruz Island, CA to 120W between 150 NM and 250 NM offshore-  
246 PM PDT Fri May 16 2025

.TONIGHT...N to NW winds 10 to 20 kt. Seas 7 to 9 ft.

.SAT...NW winds 15 to 20 kt, diminishing to 10 to 15 kt. Seas  
6 to 8 ft.

.SAT NIGHT...NW winds 10 to 20 kt. Seas 6 to 8 ft.

.SUN...N to NW winds 15 to 25 kt. Seas 6 to 11 ft.

.SUN NIGHT...N to NW winds 15 to 25 kt. Seas 8 to 12 ft.

.MON...N to NW winds 15 to 25 kt. Seas 9 to 12 ft.

.MON NIGHT...N winds 15 to 25 kt. Seas 8 to 11 ft.

.TUE...N winds 15 to 25 kt. Seas 8 to 10 ft.

.TUE NIGHT...N winds 15 to 25 kt. Seas 7 to 10 ft.

.WED...N winds 15 to 25 kt. Seas 7 to 11 ft.

.WED NIGHT...N to NW winds 10 to 20 kt. Seas 7 to 11 ft.

PZZ945-171100-

San Clemente Island, CA to 30N from 60 NM offshore west to 120W-  
246 PM PDT Fri May 16 2025

.TONIGHT...NW winds 5 to 10 kt, increasing to 10 to 20 kt early,  
then, diminishing to 5 to 15 kt. Seas 5 to 8 ft.

.SAT...NW winds 10 to 20 kt, becoming 10 to 15 kt. Seas 5 to  
8 ft.

.SAT NIGHT...NW winds 15 to 20 kt. Seas 6 to 8 ft.

.SUN...NW winds 15 to 20 kt. Seas 6 to 9 ft.

.SUN NIGHT...NW winds 10 to 20 kt. Seas 6 to 10 ft.

.MON...NW winds 10 to 20 kt, diminishing to 5 to 15 kt. Seas  
7 to 10 ft.

.MON NIGHT...N to NW winds 5 to 15 kt. Seas 6 to 9 ft.

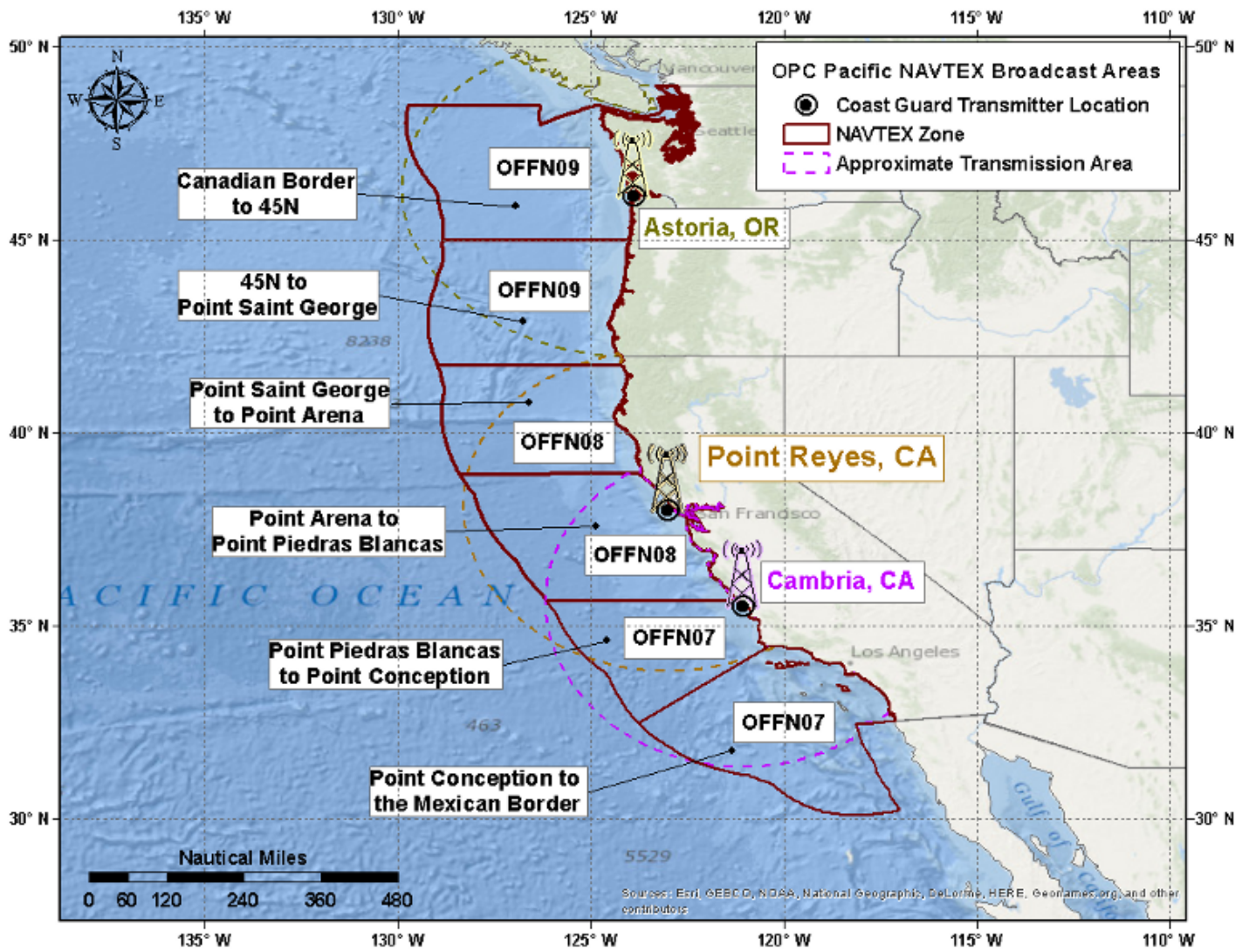
.TUE...N to NW winds 5 to 15 kt. Seas 6 to 9 ft.

.TUE NIGHT...NW winds 10 to 15 kt. Seas 5 to 8 ft.

.WED...NW winds 10 to 15 kt. Seas 5 to 7 ft.

.WED NIGHT...NW winds 10 to 15 kt. Seas 5 to 8 ft.

# NAVTEX MARINE FORECAST: ZONE MAP



KWNM 162218

OFFN09

NAVTEX Marine Forecast for Washington and Oregon waters

NWS Ocean Prediction Center Washington DC

318 PM PDT Fri May 16 2025

Conditions given represent the highest within that period.

...Please refer to Coastal Waters Forecasts (CWF) available through NOAA Weather Radio and other means for detailed coastal waters forecasts...

.SYNOPSIS...A cold front moving slowly through the inner waters will stall and eventually dissipate near the coast by this evening. Another cold front will move into the waters tonight and move E and SE across the area and out of the area by early Sat morning. High pressure will build in from the W behind the cold front and settle over the waters through Sun. The area of high pressure will move E of the waters Sun night as a warm front crosses the waters followed by a cold front moving E and SE over the area Mon and exiting the region by Mon night. On Tue and Tue night high pressure will be building E over the region and gradually moving over the waters Wed and Wed night.

Canadian border to 45N

.TONIGHT...NW winds 10 to 20 kt. Seas 4 to 8 ft. Chance of rain.  
.SAT...NW winds 15 to 25 kt. Seas 5 to 9 ft.  
.SAT NIGHT...NW winds 15 to 25 kt. Seas 7 to 10 ft.  
.SUN...W winds 15 to 25 kt. Seas 5 to 9 ft.  
.SUN NIGHT...S winds 20 to 30 kt. Seas 5 to 9 ft.  
.MON...W winds 15 to 25 kt. Seas 7 to 12 ft.  
.MON NIGHT...W winds 10 to 20 kt. Seas 10 to 14 ft.  
.TUE...W winds 10 to 20 kt. Seas 8 to 13 ft.  
.TUE NIGHT...W to NW winds 5 to 15 kt. Seas 7 to 10 ft.  
.WED...NW winds 5 to 15 kt. Seas 5 to 9 ft.  
.WED NIGHT...NW winds 5 to 15 kt. Seas 4 to 7 ft.

45N to Point Saint George

.TONIGHT...NW winds 10 to 20 kt. Seas 4 to 8 ft. Chance of rain with vsby 1 nm or less.  
.SAT...NW winds 10 to 20 kt. Seas 5 to 8 ft.  
.SAT NIGHT...N to NW winds 15 to 25 kt. Seas 5 to 9 ft.  
.SUN...NW winds 10 to 20 kt. Seas 4 to 8 ft.  
.SUN NIGHT...W to SW winds 15 to 25 kt. Seas 4 to 7 ft.  
.MON...W to NW winds 10 to 20 kt. Seas 5 to 9 ft.  
.MON NIGHT...W to NW winds 10 to 20 kt. Seas 7 to 12 ft.  
.TUE...N winds 15 to 25 kt. Seas 7 to 12 ft.

.TUE NIGHT...N winds 15 to 25 kt. Seas 7 to 10 ft.

.WED...N winds 15 to 25 kt. Seas 6 to 10 ft.

.WED NIGHT...N winds 10 to 20 kt. Seas 4 to 8 ft.



KWNM 162218

OFFN08

NAVTEX Marine Forecast for northern California waters

NWS Ocean Prediction Center Washington DC

318 PM PDT Fri May 16 2025

Conditions given represent the highest within that period.

...Please refer to Coastal Waters Forecasts (CWF) available through NOAA Weather Radio and other means for detailed coastal waters forecasts...

.SYNOPSIS...High pressure will be centered well to the W of the N and central waters tonight and Sat. A cold front will move S over the N and central waters tonight through Sat, then over the S waters later Sat and Sat night. A coastal trough will persist along central and S California tonight and weaken through early Sat. The area of high pressure will build E to SE over the N and central waters behind the cold front later Sat and Sat night through Mon night. A coastal trough will redevelop and expand along the entire coast Sat night and Sun while strengthening especially over the central and S areas from Sun night into Mon night then persisting along much of the coast Tue through Wed night. The center of high pressure will move closer to the N and central waters later Mon night and then move to the N and NW of the region Tue and Tue night and persist over this area through Wed night.

Point Saint George to Point Arena

.TONIGHT...NW winds 15 to 25 kt. Seas 5 to 8 ft.  
.SAT...N to NW winds 15 to 25 kt. Seas 5 to 8 ft.  
.SAT NIGHT...N winds 20 to 30 kt. Seas 5 to 9 ft.  
.SUN...N to NW winds 20 to 30 kt. Seas 6 to 10 ft.  
.SUN NIGHT...N to NW winds 15 to 25 kt. Seas 6 to 9 ft.  
.MON...NW winds 10 to 20 kt. Seas 5 to 8 ft.  
.MON NIGHT...N winds 15 to 25 kt. Seas 6 to 10 ft.  
.TUE...N winds 20 to 30 kt. Seas 7 to 11 ft.  
.TUE NIGHT...N winds 20 to 30 kt. Seas 8 to 12 ft.  
.WED...N winds 20 to 30 kt. Seas 8 to 12 ft.  
.WED NIGHT...N winds 15 to 25 kt. Seas 7 to 11 ft.

Point Arena to Point Piedras Blancas

...GALE WARNING...

.TONIGHT...NW winds 20 to 30 kt. Seas 6 to 10 ft.  
.SAT...NW winds 20 to 30 kt. Seas 6 to 9 ft.  
.SAT NIGHT...N to NW winds 25 to 35 kt. Seas 7 to 13 ft.

.SUN...N to NW winds 20 to 30 kt. Seas 9 to 13 ft.  
.SUN NIGHT...NW winds 20 to 30 kt. Seas 8 to 13 ft.  
.MON...NW winds 20 to 30 kt. Seas 7 to 13 ft.  
.MON NIGHT...N to NW winds 20 to 30 kt. Seas 6 to 11 ft.  
.TUE...N to NW winds 20 to 30 kt. Seas 7 to 11 ft.  
.TUE NIGHT...N winds 20 to 30 kt. Seas 8 to 13 ft.  
.WED...N winds 20 to 30 kt. Seas 8 to 13 ft.  
.WED NIGHT...N winds 20 to 30 kt. Seas 8 to 12 ft.

KWNM 162219

OFFN07

NAVTEX Marine Forecast for southern California waters

NWS Ocean Prediction Center Washington DC

319 PM PDT Fri May 16 2025

Conditions given represent the highest within that period.

...Please refer to Coastal Waters Forecasts (CWF) available through NOAA Weather Radio and other means for detailed coastal waters forecasts...

.SYNOPSIS...High pressure will be centered well to the W of the N and central waters tonight and Sat. A cold front will move S over the N and central waters tonight through Sat, then over the S waters later Sat and Sat night. A coastal trough will persist along central and S California tonight and weaken through early Sat. The area of high pressure will build E to SE over the N and central waters behind the cold front later Sat and Sat night through Mon night. A coastal trough will redevelop and expand along the entire coast Sat night and Sun while strengthening especially over the central and S areas from Sun night into Mon night then persisting along much of the coast Tue through Wed night. The center of high pressure will move closer to the N and central waters later Mon night and then move to the N and NW of the region Tue and Tue night and persist over this area through Wed night.

Point Piedras Blancas to Point Conception

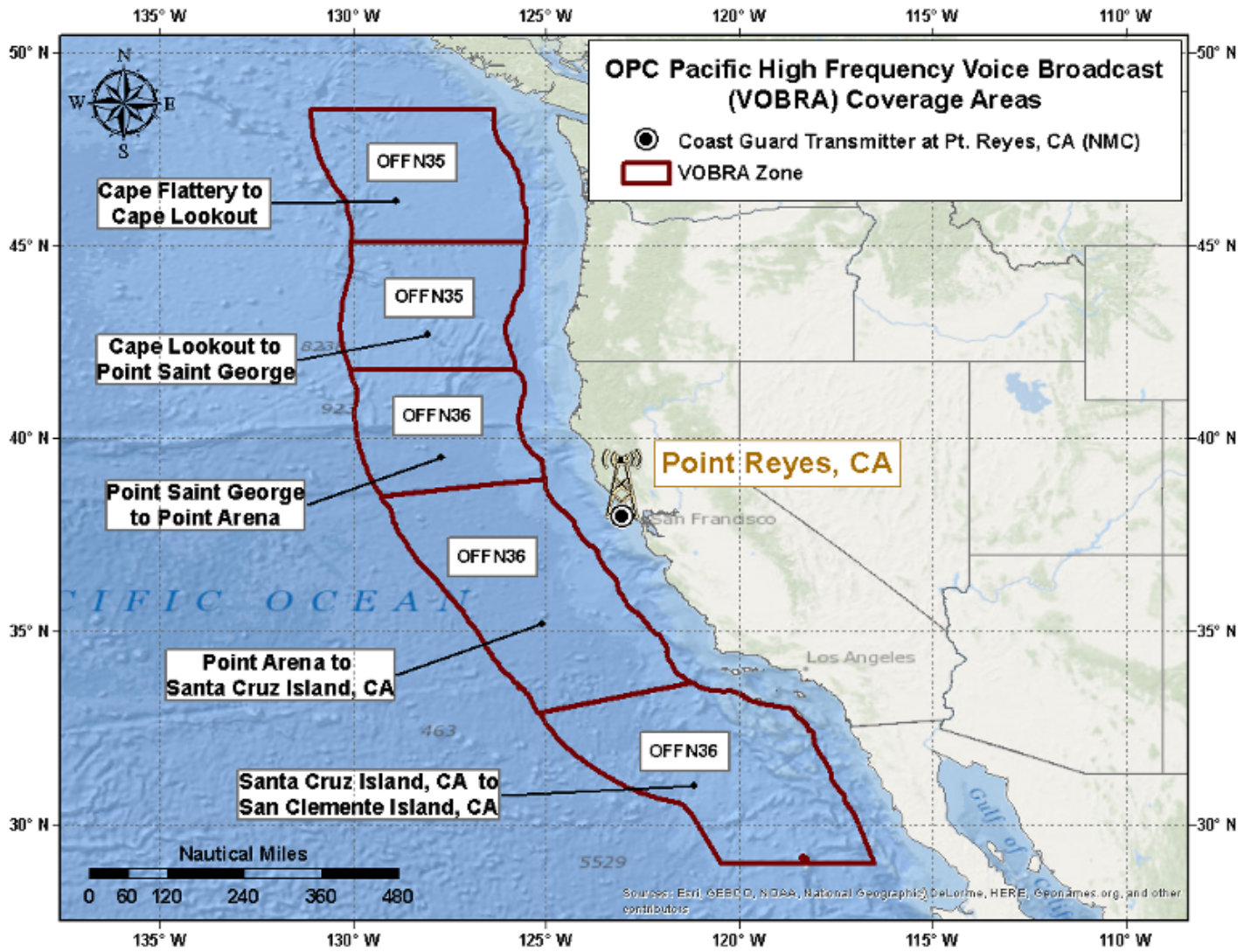
.TONIGHT...NW winds 15 to 25 kt. Seas 6 to 9 ft.  
.SAT...NW winds 20 to 30 kt. Seas 6 to 9 ft.  
.SAT NIGHT...N to NW winds 20 to 30 kt. Seas 7 to 10 ft.  
.SUN...N to NW winds 20 to 30 kt. Seas 8 to 12 ft.  
.SUN NIGHT...N to NW winds 20 to 30 kt. Seas 8 to 13 ft.  
.MON...N winds 20 to 30 kt. Seas 8 to 12 ft.  
.MON NIGHT...N winds 20 to 30 kt. Seas 8 to 12 ft.  
.TUE...N to NW winds 15 to 25 kt. Seas 7 to 11 ft.  
.TUE NIGHT...N winds 15 to 25 kt. Seas 7 to 11 ft.  
.WED...N winds 15 to 25 kt. Seas 7 to 12 ft.  
.WED NIGHT...N winds 15 to 25 kt. Seas 7 to 11 ft.

Point Conception to the Mexican border

.TONIGHT...NW winds 15 to 25 kt. Seas 6 to 9 ft.  
.SAT...NW winds 15 to 25 kt. Seas 6 to 9 ft.  
.SAT NIGHT...NW winds 20 to 30 kt. Seas 7 to 10 ft.  
.SUN...NW winds 20 to 30 kt. Seas 8 to 12 ft.  
.SUN NIGHT...NW winds 20 to 30 kt. Seas 8 to 12 ft.

.MON...N to NW winds 15 to 25 kt. Seas 8 to 12 ft.  
.MON NIGHT...N winds 15 to 25 kt. Seas 8 to 12 ft.  
.TUE...N winds 15 to 25 kt. Seas 7 to 11 ft.  
.TUE NIGHT...N to NW winds 15 to 25 kt. Seas 6 to 9 ft.  
.WED...N to NW winds 15 to 25 kt. Seas 7 to 10 ft.  
.WED NIGHT...NW winds 10 to 20 kt. Seas 7 to 10 ft.

# MARINE WEATHER HF VOICE BROADCAST: ZONE MAP



KWBC 162125

OFFN35

Marine Weather HF Voice Broadcast  
NWS Ocean Prediction Center Washington DC  
225 PM PDT Fri May 16 2025

Washington and Oregon waters-  
Inner waters from 60 nm to 150 nm offshore.  
Outer waters from 150 nm to 250 nm offshore.

Conditions given represent the highest within that period.

Seas given as significant wave height, which is the average height of the highest 1/3 of the waves. Individual waves may be more than twice the significant wave height.

.SYNOPSIS FOR WASHINGTON AND OREGON WATERS...A cold front moving slowly through the inner waters will stall and eventually dissipate near the coast by this evening. Another cold front will move into the waters tonight and move E and SE across the area and out of the area by early Sat morning. High pressure will build in from the W behind the cold front and settle over the waters through Sun. The area of high pressure will move E of the waters Sun night as a warm front crosses the waters followed by a cold front moving E and SE over the area Mon and exiting the region by Mon night. On Tue and Tue night high pressure will be building E over the region and gradually moving over the waters Wed and Wed night.

Cape Flattery to Cape Lookout

.TONIGHT...W winds 5 to 10 kt, becoming NW 10 to 20 kt. Seas 6 to 8 ft. Chance of rain.  
.SAT...NW winds 10 to 20 kt. Seas 6 to 8 ft.  
.SAT NIGHT...NW winds 15 to 25 kt. Seas 6 to 9 ft.  
.SUN...W to NW winds 10 to 20 kt. Seas 6 to 9 ft.  
.SUN NIGHT...S winds 15 to 25 kt. Seas 6 to 8 ft.  
.MON...W winds 15 to 25 kt. Seas 8 to 14 ft.  
.MON NIGHT...W winds 15 to 25 kt. Seas 9 to 15 ft.  
.TUE...W winds 10 to 20 kt. Seas 10 to 14 ft.  
.TUE NIGHT...W to NW winds 10 to 15 kt. Seas 8 to 10 ft.  
.WED...NW winds 10 to 15 kt. Seas 6 to 8 ft.  
.WED NIGHT...NW winds 10 to 15 kt. Seas 5 to 6 ft.

Cape Lookout to Point St. George

.TONIGHT...W winds 5 to 15 kt, becoming W to NW 10 to 20 kt. Seas 5 to 7 ft.  
.SAT...NW winds 10 to 20 kt. Seas 6 to 7 ft.

.SAT NIGHT...NW winds 10 to 20 kt. Seas 6 to 8 ft.  
.SUN...W to NW winds 5 to 15 kt. Seas 6 to 7 ft.  
.SUN NIGHT...W to SW winds 10 to 20 kt. Seas 5 to 7 ft.  
.MON...W winds 10 to 20 kt. Seas 6 to 11 ft.  
.MON NIGHT...W to NW winds 10 to 20 kt. Seas 8 to 13 ft.  
.TUE...NW winds 10 to 15 kt. Seas 8 to 12 ft.  
.TUE NIGHT...N winds 15 to 25 kt. Seas 7 to 10 ft.  
.WED...N winds 15 to 25 kt. Seas 6 to 9 ft.  
.WED NIGHT...N winds 10 to 20 kt. Seas 5 to 8 ft.

KWBC 162146

OFFN36

Marine Weather HF Voice Broadcast  
NWS Ocean Prediction Center Washington DC  
246 PM PDT Fri May 16 2025

California waters-

Inner waters from 60 nm to 150 nm offshore.

Outer waters from 150 nm to 250 nm offshore.

Conditions given represent the highest within that period.

Seas given as significant wave height, which is the average height of the highest 1/3 of the waves. Individual waves may be more than twice the significant wave height.

.SYNOPSIS FOR CALIFORNIA WATERS...High pressure will be centered well to the W of the N and central waters tonight and Sat. A cold front will move S over the N and central waters tonight through Sat, then over the S waters later Sat and Sat night. A coastal trough will persist along central and S California tonight and weaken through early Sat. The area of high pressure will build E to SE over the N and central waters behind the cold front later Sat and Sat night through Mon night. A coastal trough will redevelop and expand along the entire coast Sat night and Sun while strengthening especially over the central and S areas from Sun night into Mon night then persisting along much of the coast Tue through Wed night. The center of high pressure will move closer to the N and central waters later Mon night and then move to the N and NW of the region Tue and Tue night and persist over this area through Wed night.

Point St. George to Point Arena

.TONIGHT...NW winds 10 to 20 kt. Seas 5 to 7 ft.  
.SAT...N to NW winds 10 to 20 kt. Seas 6 to 8 ft.  
.SAT NIGHT...N winds 15 to 25 kt. Seas 6 to 9 ft.  
.SUN...N to NW winds 15 to 25 kt. Seas 6 to 10 ft.  
.SUN NIGHT...W to NW winds 15 to 25 kt. Seas 5 to 9 ft.  
.MON...NW winds 10 to 20 kt. Seas 4 to 7 ft.  
.MON NIGHT...N to NW winds 15 to 25 kt. Seas 7 to 11 ft.  
.TUE...N winds 20 to 30 kt. Seas 7 to 11 ft.  
.TUE NIGHT...N winds 20 to 30 kt. Seas 7 to 12 ft.  
.WED...N winds 15 to 25 kt. Seas 6 to 11 ft.  
.WED NIGHT...N winds 15 to 25 kt. Seas 6 to 10 ft.

Point Arena to Santa Cruz Island, CA

.TONIGHT...NW winds 15 to 25 kt. Seas 6 to 10 ft.



.SAT...NW winds 15 to 25 kt. Seas 6 to 9 ft.  
.SAT NIGHT...N to NW winds 20 to 30 kt. Seas 7 to 12 ft.  
.SUN...N winds 20 to 30 kt. Seas 8 to 13 ft.  
.SUN NIGHT...N to NW winds 20 to 30 kt. Seas 7 to 12 ft.  
.MON...N winds 20 to 30 kt. Seas 7 to 12 ft.  
.MON NIGHT...N winds 20 to 30 kt. Seas 7 to 12 ft.  
.TUE...N winds 20 to 30 kt. Seas 6 to 11 ft.  
.TUE NIGHT...N winds 20 to 30 kt. Seas 8 to 13 ft.  
.WED...N to NW winds 20 to 30 kt. Seas 7 to 13 ft.  
.WED NIGHT...N winds 20 to 30 kt. Seas 7 to 12 ft.

Santa Cruz Island, CA to San Clemente Island, CA...south to  
Guadalupe Island

.TONIGHT...N to NW winds 15 to 25 kt. Seas 5 to 9 ft.  
.SAT...NW winds 10 to 20 kt. Seas 5 to 9 ft.  
.SAT NIGHT...NW winds 20 to 30 kt. Seas 6 to 9 ft.  
.SUN...NW winds 20 to 30 kt. Seas 7 to 12 ft.  
.SUN NIGHT...NW winds 20 to 30 kt. Seas 7 to 12 ft.  
.MON...N to NW winds 15 to 25 kt. Seas 7 to 12 ft.  
.MON NIGHT...N winds 15 to 25 kt. Seas 7 to 11 ft.  
.TUE...N winds 15 to 25 kt. Seas 7 to 11 ft.  
.TUE NIGHT...N to NW winds 15 to 25 kt. Seas 6 to 10 ft.  
.WED...N to NW winds 15 to 25 kt. Seas 7 to 11 ft.  
.WED NIGHT...N to NW winds 10 to 20 kt. Seas 7 to 11 ft.