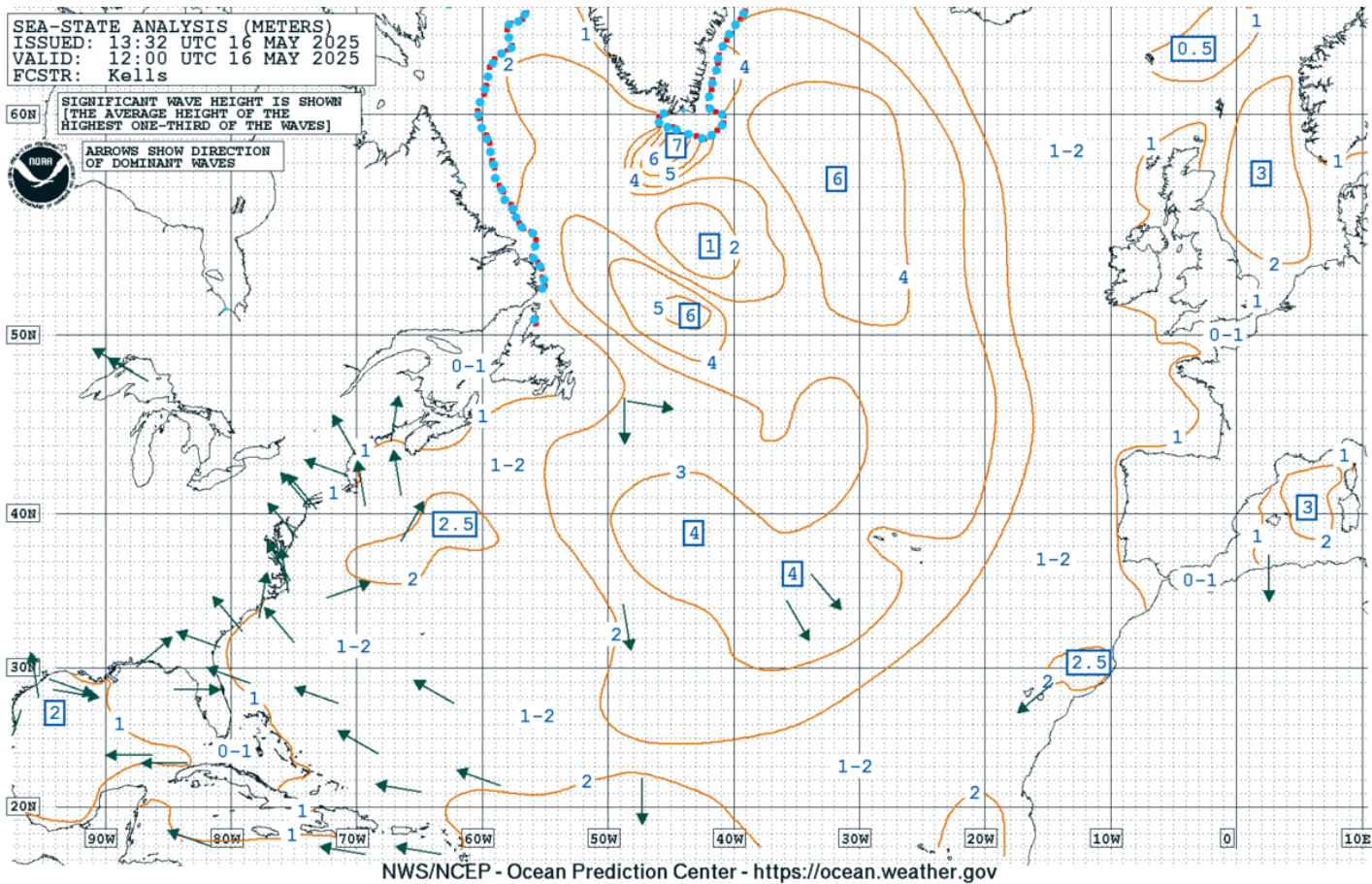
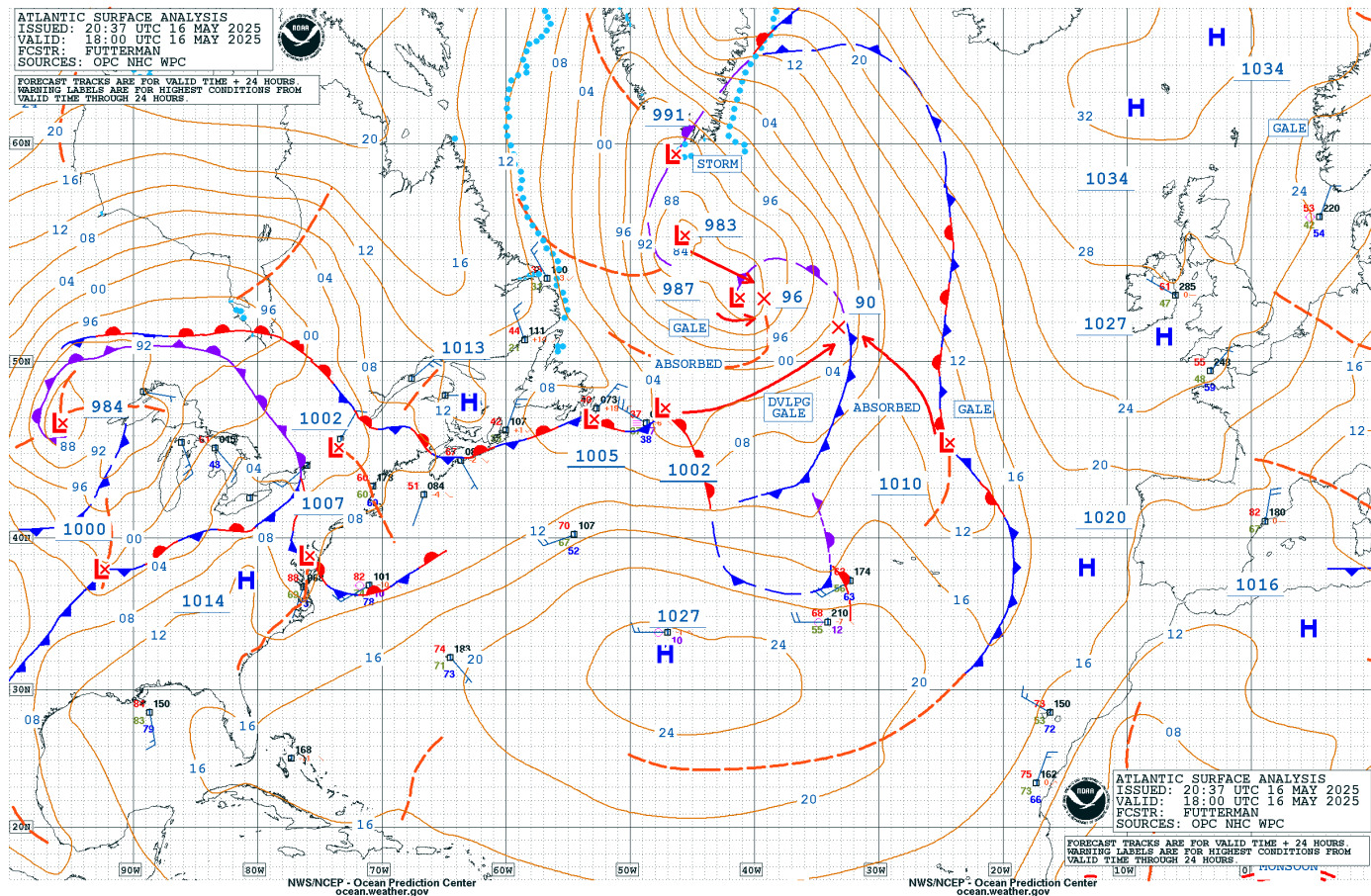
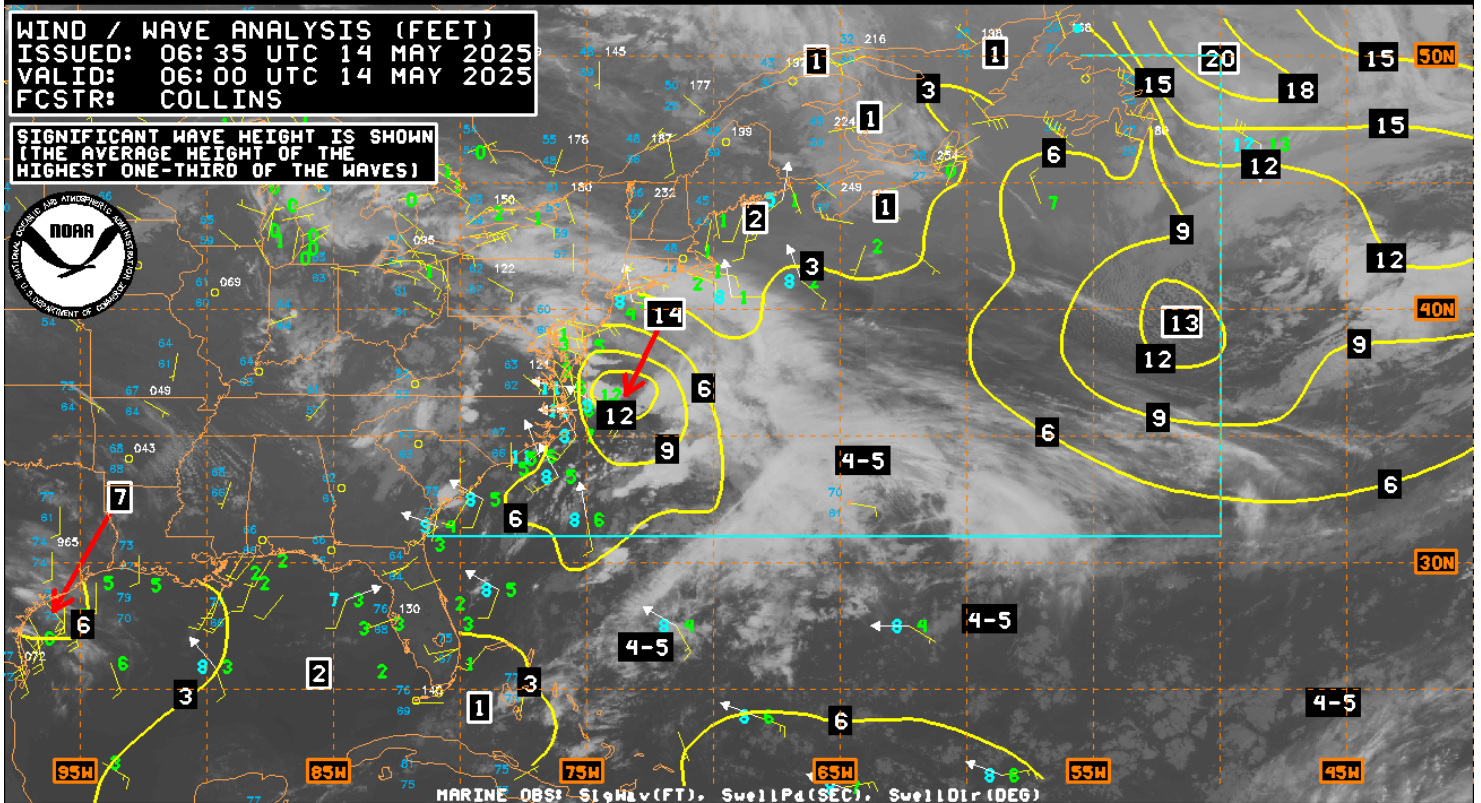


# ATLANTIC OCEAN ANALYSIS



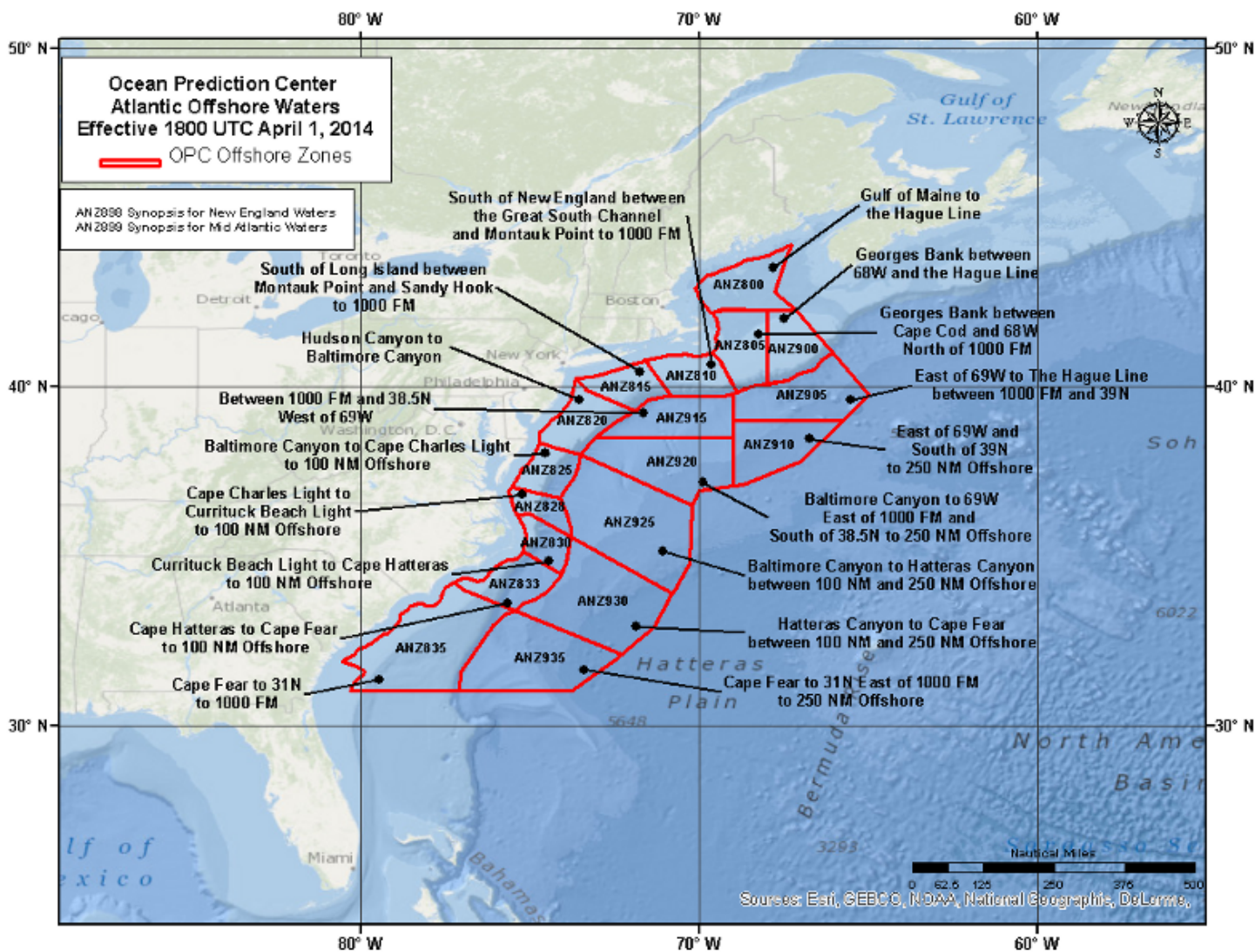
**WIND / WAVE ANALYSIS (FEET)**  
ISSUED: 06:35 UTC 14 MAY 2025  
VALID: 06:00 UTC 14 MAY 2025  
FCSTR: COLLINS

**SIGNIFICANT WAVE HEIGHT IS SHOWN**  
(THE AVERAGE HEIGHT OF THE  
HIGHEST ONE-THIRD OF THE WAVES)



MARINE OBS: SigWav(FT), SwellPd(SEC), SwellDir(DEG)  
NWS/NCEP - Ocean Prediction Center  
ocean.weather.gov

# OFFSHORE WATERS FORECAST: ZONE MAP



KWBC 162023

OFFNT1

Offshore Waters Forecast

NWS Ocean Prediction Center Washington DC

423 PM EDT Fri May 16 2025

New England continental shelf and slope waters from 25 nm offshore to the Hague Line, except to 1000 fm south of New England.

Seas given as significant wave height, which is the average height of the highest 1/3 of the waves. Individual waves may be more than twice the significant wave height.

Locally higher winds and seas can be expected in and near tstms.

ANZ898-170830-

423 PM EDT Fri May 16 2025

.SYNOPSIS FOR NEW ENGLAND WATERS...A stationary front will continue S of the waters tonight, then lift NE over the area as a warm front Sat into Sat night. Low pressure will move offshore over the Gulf of Maine Sat night into Sun while pulling a cold front across the region. The low will then drift off to the E Sun night into Mon. A series of secondary cold fronts or low pressure troughs will move SE across the area Sun night into Tue. A weak high pressure ridge will build E over the region Tue night and Wed, then shift E of the area Wed night as a warm front approaches from the SW.

ANZ800-170830-

Gulf of Maine to the Hague Line-

423 PM EDT Fri May 16 2025

.TONIGHT...S winds 5 to 10 kt, becoming 5 to 15 kt. Seas 3 to 4 ft. Areas of fog early. Chance of showers. Vsby 1 NM or less.  
.SAT...S winds 10 to 15 kt, becoming SE 10 to 20 kt. Seas 3 to 4 ft. Areas of fog. Showers likely. Isolated tstms. Vsby 1 NM or less.  
.SAT NIGHT...S winds 10 to 20 kt, becoming S to SW 5 to 15 kt. Seas 3 to 5 ft. Scattered tstms. Showers likely. Patchy fog. Vsby 1 NM or less.  
.SUN...W winds 10 to 15 kt, becoming SW. Seas 3 to 5 ft. Scattered showers and tstms with vsby 1 nm or less.  
.SUN NIGHT...W to SW winds 10 to 20 kt, becoming W to NW. Seas 3 to 6 ft.  
.MON...NW winds 10 to 20 kt. Seas 3 to 6 ft.  
.MON NIGHT...N to NW winds 10 to 20 kt. Seas 3 to 6 ft.

.TUE...N winds 15 to 20 kt, becoming NE 10 to 20 kt. Seas 3 to 6 ft.

.TUE NIGHT...NE winds 10 to 20 kt. Seas 3 to 6 ft.

.WED...NE winds 10 to 15 kt, becoming E 10 to 20 kt. Seas 4 to 7 ft.

.WED NIGHT...E winds 15 to 25 kt. Seas 4 to 8 ft.

ANZ805-170830-

Georges Bank between Cape Cod and 68W north of 1000 FM-  
423 PM EDT Fri May 16 2025

.TONIGHT...S to SW winds 5 to 10 kt. Seas 3 to 5 ft. Areas of fog early. Chance of showers and tstms. Vsby 1 NM or less.

.SAT...S to SE winds 10 to 15 kt, increasing to 15 to 20 kt. Seas 3 to 4 ft. Areas of fog. Chance of showers. Slight chance of tstms. Vsby 1 NM or less.

.SAT NIGHT...S to SW winds 10 to 20 kt, becoming SW 10 to 15 kt. Seas 3 to 5 ft. Scattered showers and chance of tstms with vsby 1 nm or less.

.SUN...W winds 10 to 15 kt, becoming W to SW 10 to 20 kt. Seas 3 to 6 ft. Scattered showers and tstms with vsby 1 nm or less.

.SUN NIGHT...W winds 15 to 20 kt. Seas 4 to 7 ft.

.MON...W to NW winds 10 to 20 kt. Seas 4 to 7 ft.

.MON NIGHT...NW winds 10 to 20 kt. Seas 4 to 7 ft.

.TUE...N winds 10 to 20 kt. Seas 4 to 6 ft.

.TUE NIGHT...NE winds 10 to 20 kt. Seas 4 to 6 ft.

.WED...NE winds 10 to 20 kt, becoming E 15 to 20 kt. Seas 4 to 7 ft.

.WED NIGHT...E winds 15 to 25 kt. Seas 6 to 8 ft.

ANZ900-170830-

Georges Bank between 68W and the Hague Line-  
423 PM EDT Fri May 16 2025

.TONIGHT...Variable winds less than 5 kt, becoming W to SW, then, becoming S. Seas 4 to 5 ft. Areas of fog early. Chance of showers and tstms. Vsby 1 NM or less.

.SAT...S to SE winds 5 to 15 kt, increasing to 10 to 20 kt. Seas 4 to 5 ft. Areas of fog. Chance of showers. Vsby 1 NM or less.

.SAT NIGHT...S winds 10 to 20 kt, becoming SW 10 to 15 kt. Seas 4 to 5 ft. Scattered showers and tstms. Patchy fog. Vsby 1 NM or less.

.SUN...W to SW winds 10 to 20 kt. Seas 4 to 6 ft. Scattered showers and tstms. Areas of fog. Vsby 1 NM or less.

.SUN NIGHT...W to SW winds 10 to 20 kt. Seas 5 to 7 ft.

.MON...W winds 15 to 25 kt. Seas 6 to 7 ft.

.MON NIGHT...W to NW winds 15 to 20 kt. Seas 5 to 8 ft.

.TUE...N to NW winds 10 to 20 kt. Seas 5 to 6 ft.

.TUE NIGHT...NE winds 10 to 20 kt. Seas 5 to 8 ft.

.WED...E to NE winds 15 to 20 kt. Seas 6 to 9 ft.

.WED NIGHT...E winds 15 to 25 kt. Seas 6 to 8 ft.

ANZ810-170830-

South of New England between the Great South Channel and Montauk Point to 1000 FM-

423 PM EDT Fri May 16 2025

.TONIGHT...S to SW winds 5 to 10 kt, becoming S 5 to 15 kt. Seas 3 to 5 ft. Areas of fog with vsby 1 nm or less early. Chance of showers and tstms with vsby 1 nm or less.

.SAT...S winds 10 to 15 kt, becoming S to SW 10 to 20 kt. Seas 3 to 4 ft. Chance of showers. Slight chance of tstms. Vsby 1 NM or less.

.SAT NIGHT...SW winds 15 to 20 kt, becoming W 10 to 15 kt. Seas 4 to 6 ft. Chance of showers and tstms with vsby 1 nm or less.

.SUN...W winds 15 to 20 kt. Seas 4 to 6 ft.

.SUN NIGHT...W winds 15 to 25 kt. Seas 5 to 7 ft.

.MON...W to NW winds 15 to 25 kt. Seas 4 to 8 ft.

.MON NIGHT...NW winds 10 to 20 kt. Seas 4 to 7 ft.

.TUE...NW winds 10 to 15 kt, becoming N. Seas 3 to 6 ft.

.TUE NIGHT...NE winds 10 to 15 kt. Seas 3 to 5 ft.

.WED...E winds 10 to 20 kt. Seas 4 to 7 ft.

.WED NIGHT...E to SE winds 20 to 30 kt. Seas 5 to 8 ft.

ANZ815-170830-

South of Long Island between Montauk Point and Sandy Hook to 1000 FM-

423 PM EDT Fri May 16 2025

.TONIGHT...S winds 10 to 15 kt, diminishing to 5 to 10 kt. Seas 3 to 4 ft. Chance of showers and scattered tstms with vsby 1 nm or less.

.SAT...S to SW winds 10 to 20 kt. Seas 3 to 5 ft. Chance of showers and tstms with vsby 1 nm or less.

.SAT NIGHT...SW winds 10 to 20 kt, becoming W 15 to 20 kt. Seas 4 to 6 ft. Chance of showers and tstms with vsby 1 nm or less.

.SUN...W winds 15 to 20 kt. Seas 4 to 6 ft.

.SUN NIGHT...W winds 15 to 20 kt, becoming NW 15 to 25 kt. Seas 4 to 7 ft.

.MON...NW winds 15 to 25 kt, becoming W 10 to 20 kt. Seas 4 to 7 ft.

.MON NIGHT...NW winds 15 to 20 kt. Seas 3 to 5 ft.

.TUE...N to NW winds 5 to 15 kt. Seas 3 to 5 ft.

.TUE NIGHT...NE winds 5 to 15 kt. Seas 3 to 4 ft.

.WED...E winds 10 to 20 kt. Seas 3 to 6 ft.

.WED NIGHT...E to SE winds 20 to 30 kt. Seas 5 to 9 ft.



KWBC 162023

OFFNT2

Offshore Waters Forecast

NWS Ocean Prediction Center Washington DC

423 PM EDT Fri May 16 2025

West central North Atlantic continental shelf and slope waters beyond 20 nm to 250 nm offshore, including south of Georges Bank from 1000 fm to 250 nm offshore.

Seas given as significant wave height, which is the average height of the highest 1/3 of the waves. Individual waves may be more than twice the significant wave height.

Locally higher winds and seas can be expected in and near tstms.

ANZ899-170830-

423 PM EDT Fri May 16 2025

.SYNOPSIS FOR MID ATLC WATERS...A stationary front over the central and N waters this evening will lift N of the area as a warm front tonight into Sat. Mariners should use caution for locally gusty winds and rough seas in and near locally heavy tstms. A cold front will approach from the W Sat, and then move E and SE over the waters Sat night into Sun. Broad low pressure will drift E and pass N and then NE of the area Sun night into Tue as a series of secondary cold fronts or low pressure troughs move E and SE over the region. A weak high pressure ridge will build S over the waters later Tue and Tue night as a warm front extend E off the SE coast. The warm front will lift N across the area Wed and Wed night as an associated cold front approaches from the W.

ANZ820-170830-

Hudson Canyon to Baltimore Canyon to 1000 FM-

423 PM EDT Fri May 16 2025

.TONIGHT...S to SW winds 5 to 15 kt. Seas 3 to 4 ft. Scattered showers and tstms with vsby 1 nm or less.

.SAT...S to SW winds 10 to 20 kt. Seas 3 to 5 ft. Scattered showers and tstms with vsby 1 nm or less.

.SAT NIGHT...W to SW winds 10 to 20 kt. Seas 3 to 6 ft. Chance of showers and tstms.

.SUN...W winds 15 to 25 kt. Seas 3 to 6 ft.

.SUN NIGHT...W winds 15 to 20 kt, becoming NW 15 to 25 kt. Seas 4 to 7 ft.

.MON...NW winds 15 to 25 kt, becoming W 10 to 20 kt. Seas 4 to 7 ft.



.MON NIGHT...NW winds 10 to 20 kt, becoming N 15 to 20 kt. Seas 3 to 5 ft.  
.TUE...N winds 5 to 15 kt. Seas 3 to 5 ft.  
.TUE NIGHT...E to NE winds 5 to 10 kt, becoming E 10 to 15 kt. Seas 3 to 4 ft.  
.WED...E winds 15 to 25 kt. Seas 3 to 5 ft.  
.WED NIGHT...E winds 15 to 25 kt, becoming S to SE. Seas 5 to 9 ft.

ANZ915-170830-

Between 1000FM and 38.5 N west of 69 W-  
423 PM EDT Fri May 16 2025

.TONIGHT...W to SW winds 5 to 10 kt, becoming S, then, becoming S to SW 5 to 15 kt. Seas 4 to 5 ft. Scattered showers and tstms with vsby 1 nm or less.  
.SAT...S to SW winds 10 to 20 kt. Seas 4 to 5 ft. Areas of fog. Chance of showers and slight chance of tstms. Vsby 1 NM or less.  
.SAT NIGHT...SW winds 15 to 20 kt, becoming W. Seas 5 to 6 ft. Chance of showers and tstms with vsby 1 nm or less.  
.SUN...W winds 15 to 25 kt. Seas 5 to 7 ft. Scattered showers and tstms with vsby 1 nm or less.  
.SUN NIGHT...W to NW winds 20 to 30 kt. Seas 5 to 8 ft.  
.MON...NW winds 20 to 30 kt, becoming W 15 to 25 kt. Seas 5 to 9 ft.  
.MON NIGHT...W to NW winds 15 to 25 kt. Seas 5 to 9 ft.  
.TUE...N to NW winds 10 to 20 kt. Seas 4 to 6 ft.  
.TUE NIGHT...N to NE winds 10 to 15 kt. Seas 3 to 5 ft.  
.WED...E to NE winds 10 to 20 kt. Seas 4 to 7 ft.  
.WED NIGHT...E winds 15 to 25 kt, becoming SE 20 to 30 kt. Seas 6 to 9 ft.

ANZ920-170830-

Baltimore Canyon to 69W east of 1000 FM and south of 38.5N to 250 NM offshore-  
423 PM EDT Fri May 16 2025

.TONIGHT...W to SW winds 10 to 20 kt, becoming SW 5 to 15 kt, then, increasing to 10 to 20 kt. Seas 4 to 7 ft. Scattered showers and tstms with vsby 1 nm or less.  
.SAT...SW winds 15 to 25 kt. Seas 4 to 8 ft. Chance of showers and slight chance of tstms with vsby 1 nm or less.  
.SAT NIGHT...SW winds 15 to 25 kt, becoming W. Seas 6 to 10 ft. Chance of showers and tstms with vsby 1 nm or less.  
.SUN...W to NW winds 15 to 20 kt, becoming W 20 to 30 kt. Seas 5 to 9 ft. Scattered showers and tstms.  
.SUN NIGHT...W to NW winds 20 to 30 kt. Seas 6 to 10 ft.  
.MON...NW winds 20 to 30 kt, becoming W. Seas 7 to 12 ft.

.MON NIGHT...W to NW winds 20 to 30 kt. Seas 7 to 12 ft.  
.TUE...NW winds 10 to 20 kt. Seas 4 to 8 ft.  
.TUE NIGHT...N to NE winds 10 to 15 kt. Seas 3 to 6 ft.  
.WED...E to NE winds 10 to 20 kt. Seas 3 to 5 ft.  
.WED NIGHT...E to SE winds 20 to 30 kt. Seas 5 to 9 ft.

ANZ905-170830-

East of 69W to the Hague Line between 1000 FM and 39N-  
423 PM EDT Fri May 16 2025

.TONIGHT...W winds 5 to 15 kt, becoming variable. Seas 4 to  
7 ft. Areas of fog early. Scattered showers and tstms. Vsby 1 NM  
or less.  
.SAT...S to SE winds 5 to 15 kt, becoming S to SW 10 to 20 kt.  
Seas 4 to 6 ft. Areas of fog. Slight chance of tstms. Vsby 1 NM  
or less.  
.SAT NIGHT...SW winds 15 to 25 kt. Seas 4 to 8 ft. Scattered  
showers and tstms with vsby 1 nm or less.  
.SUN...W to SW winds 15 to 25 kt. Seas 5 to 9 ft. Scattered  
showers and tstms with vsby 1 nm or less.  
.SUN NIGHT...W winds 20 to 30 kt. Seas 6 to 10 ft.  
.MON...W winds 20 to 30 kt. Seas 6 to 11 ft.  
.MON NIGHT...W winds 20 to 30 kt, becoming NW 15 to 25 kt. Seas  
7 to 12 ft.  
.TUE...N to NW winds 15 to 25 kt. Seas 6 to 10 ft.  
.TUE NIGHT...N to NE winds 10 to 20 kt. Seas 4 to 8 ft.  
.WED...NE winds 15 to 20 kt. Seas 6 to 10 ft.  
.WED NIGHT...E to SE winds 15 to 25 kt. Seas 7 to 10 ft.

ANZ910-170830-

East of 69W and south of 39N to 250 NM offshore-  
423 PM EDT Fri May 16 2025

.TONIGHT...W winds 10 to 20 kt, diminishing to 5 to 15 kt, then,  
becoming SW 10 to 20 kt. Seas 4 to 8 ft. Scattered showers and  
tstms with vsby 1 nm or less.  
.SAT...S to SW winds 15 to 25 kt. Seas 4 to 8 ft. Areas of fog  
with vsby 1 nm or less. Slight chance of tstms with vsby 1 nm or  
less.  
.SAT NIGHT...SW winds 15 to 25 kt. Seas 6 to 10 ft. Scattered  
showers and tstms with vsby 1 nm or less.  
.SUN...W winds 20 to 30 kt. Seas 6 to 9 ft. Scattered showers  
and tstms with vsby 1 nm or less.  
.SUN NIGHT...W winds 20 to 30 kt. Seas 7 to 11 ft.  
.MON...W winds 25 to 30 kt. Seas 8 to 12 ft.  
.MON NIGHT...W to NW winds 20 to 30 kt. Seas 7 to 12 ft.  
.TUE...NW winds 15 to 25 kt. Seas 6 to 10 ft.  
.TUE NIGHT...N winds 15 to 20 kt, diminishing to 10 to 15 kt.

Seas 4 to 8 ft.

.WED...N to NE winds 5 to 15 kt. Seas 5 to 9 ft.

.WED NIGHT...E winds 10 to 15 kt, becoming SE 15 to 25 kt. Seas 5 to 9 ft.

ANZ825-170830-

Baltimore Canyon to Cape Charles Light to 100 NM offshore-  
423 PM EDT Fri May 16 2025

.TONIGHT...SW winds 10 to 15 kt. Seas 3 to 5 ft. Scattered showers and tstms with vsby 1 nm or less.

.SAT...SW winds 15 to 20 kt. Seas 3 to 6 ft. Chance of showers and slight chance of tstms.

.SAT NIGHT...SW winds 10 to 20 kt, becoming W to NW. Seas 3 to 6 ft. Slight chance of showers and tstms.

.SUN...W winds 10 to 15 kt, becoming 10 to 20 kt. Seas 3 to 5 ft.

.SUN NIGHT...W to NW winds 10 to 20 kt. Seas 3 to 6 ft.

.MON...NW winds 10 to 20 kt, becoming W 5 to 15 kt. Seas 3 to 6 ft.

.MON NIGHT...W to NW winds 5 to 15 kt, becoming N. Seas 3 to 4 ft.

.TUE...N winds 10 to 15 kt, diminishing to 5 to 10 kt. Seas 3 to 4 ft.

.TUE NIGHT...E winds 10 to 15 kt, increasing to 15 to 20 kt. Seas 3 to 4 ft.

.WED...E winds 10 to 20 kt, becoming SE 20 to 25 kt. Seas 3 to 6 ft.

.WED NIGHT...SE winds 15 to 25 kt, becoming S to SW 15 to 20 kt. Seas 5 to 8 ft.

ANZ828-170830-

Cape Charles Light to Currituck Beach Light to 100 NM offshore-  
423 PM EDT Fri May 16 2025

.TONIGHT...SW winds 10 to 20 kt. Seas 3 to 6 ft. Scattered showers and tstms.

.SAT...SW winds 20 to 30 kt. Seas 5 to 9 ft. Chance of showers and slight chance of tstms.

.SAT NIGHT...W to SW winds 20 to 30 kt. Seas 5 to 9 ft. Chance of showers and tstms.

.SUN...W to NW winds 15 to 25 kt. Seas 4 to 8 ft.

.SUN NIGHT...W winds 15 to 25 kt, becoming NW. Seas 4 to 7 ft.

.MON...NW winds 10 to 20 kt, becoming W to NW 5 to 15 kt. Seas 4 to 7 ft.

.MON NIGHT...W to SW winds 5 to 15 kt, becoming W to NW. Seas 3 to 6 ft.

.TUE...N to NE winds 10 to 15 kt, diminishing to 5 to 10 kt.

Seas 3 to 4 ft.

.TUE NIGHT...E to NE winds 10 to 15 kt, becoming E 15 to 20 kt.

Seas 3 to 5 ft.

.WED...E winds 15 to 20 kt, becoming SE 15 to 25 kt. Seas 4 to 6 ft.

.WED NIGHT...S winds 15 to 20 kt, becoming SW 15 to 25 kt. Seas 4 to 8 ft.

ANZ925-170830-

Baltimore Canyon to Hatteras Canyon between 100 NM and 250 NM offshore-

423 PM EDT Fri May 16 2025

.TONIGHT...SW winds 10 to 20 kt. Seas 4 to 6 ft. Scattered showers and tstms with vsby 1 nm or less.

.SAT...SW winds 20 to 30 kt. Seas 5 to 9 ft. Chance of showers and slight chance of tstms with vsby 1 nm or less.

.SAT NIGHT...SW winds 20 to 30 kt, becoming W 15 to 25 kt. Seas 5 to 9 ft. Chance of showers and tstms.

.SUN...W to NW winds 15 to 25 kt. Seas 4 to 8 ft. Scattered showers and tstms.

.SUN NIGHT...W winds 15 to 25 kt, becoming NW 20 to 30 kt. Seas 4 to 8 ft.

.MON...NW winds 15 to 25 kt, becoming W. Seas 5 to 9 ft.

.MON NIGHT...W to NW winds 15 to 25 kt. Seas 5 to 9 ft.

.TUE...N to NW winds 5 to 15 kt. Seas 4 to 6 ft.

.TUE NIGHT...N to NE winds 5 to 15 kt, becoming E to NE. Seas 3 to 5 ft.

.WED...E winds 10 to 20 kt, becoming SE 15 to 25 kt. Seas 4 to 6 ft.

.WED NIGHT...SE winds 20 to 30 kt, becoming S 15 to 25 kt. Seas 5 to 9 ft.

ANZ830-170830-

Currituck Beach Light to Cape Hatteras to 100 NM offshore-

423 PM EDT Fri May 16 2025

.TONIGHT...SW winds 10 to 20 kt. Seas 3 to 6 ft. Slight chance of showers and tstms.

.SAT...SW winds 20 to 30 kt. Seas 5 to 9 ft. Slight chance of tstms.

.SAT NIGHT...W to SW winds 20 to 30 kt. Seas 5 to 9 ft. Slight chance of showers and tstms.

.SUN...W winds 15 to 25 kt. Seas 4 to 8 ft.

.SUN NIGHT...W winds 15 to 25 kt, becoming N to NW. Seas 4 to 7 ft.

.MON...NW winds 10 to 20 kt, diminishing to 5 to 15 kt. Seas 3 to 6 ft.

.MON NIGHT...W to SW winds 5 to 10 kt, becoming W 5 to 15 kt.  
Seas 3 to 6 ft.  
.TUE...N winds 5 to 15 kt, becoming NE. Seas 3 to 4 ft.  
.TUE NIGHT...NE winds 10 to 15 kt, becoming E 10 to 20 kt. Seas  
3 to 5 ft.  
.WED...S to SE winds 15 to 20 kt. Seas 4 to 6 ft.  
.WED NIGHT...S to SW winds 15 to 25 kt. Seas 5 to 8 ft.

ANZ833-170830-

Cape Hatteras to Cape Fear to 100 NM Offshore.-  
423 PM EDT Fri May 16 2025

.TONIGHT...SW winds 15 to 25 kt. Seas 4 to 7 ft. Slight chance  
of showers and tstms.  
.SAT...SW winds 15 to 20 kt, increasing to 20 to 30 kt. Seas  
4 to 8 ft.  
.SAT NIGHT...SW winds 20 to 30 kt, becoming W 15 to 25 kt. Seas  
5 to 9 ft. Slight chance of showers and tstms.  
.SUN...W winds 15 to 25 kt. Seas 4 to 8 ft.  
.SUN NIGHT...W to NW winds 10 to 20 kt. Seas 3 to 6 ft.  
.MON...N winds 5 to 15 kt, becoming variable. Seas 3 to 5 ft.  
.MON NIGHT...SW winds 5 to 10 kt, becoming W 5 to 15 kt. Seas  
3 to 5 ft.  
.TUE...W winds 5 to 10 kt, becoming N to NE 5 to 15 kt. Seas  
3 to 4 ft.  
.TUE NIGHT...E to SE winds less than 10 kt, becoming S to SW.  
Seas 3 to 4 ft.  
.WED...S to SW winds 15 to 25 kt. Seas 4 to 7 ft.  
.WED NIGHT...SW winds 20 to 25 kt. Seas 5 to 8 ft.

ANZ930-170830-

Hatteras Canyon to Cape Fear between 100 NM and 250 NM offshore-  
423 PM EDT Fri May 16 2025

.TONIGHT...SW winds 15 to 20 kt. Seas 5 to 7 ft. Slight chance  
of showers and tstms with vsby 1 nm or less.  
.SAT...SW winds 15 to 20 kt, increasing to 20 to 30 kt. Seas  
5 to 9 ft. Chance of showers and slight chance of tstms with  
vsby 1 nm or less.  
.SAT NIGHT...W to SW winds 20 to 30 kt. Seas 6 to 9 ft. Slight  
chance of showers and tstms.  
.SUN...W winds 15 to 25 kt. Seas 5 to 8 ft.  
.SUN NIGHT...W winds 15 to 25 kt. Seas 4 to 7 ft.  
.MON...W to NW winds 5 to 15 kt. Seas 4 to 6 ft.  
.MON NIGHT...W to NW winds 5 to 15 kt. Seas 3 to 6 ft.  
.TUE...S to SW winds less than 10 kt. Seas 3 to 5 ft.  
.TUE NIGHT...W winds 5 to 15 kt, becoming E. Seas 3 to 5 ft.  
.WED...E to SE winds 10 to 20 kt, becoming SW. Seas 4 to 6 ft.

.WED NIGHT...SW winds 15 to 25 kt. Seas 4 to 7 ft.

ANZ835-170830-

Cape Fear to 31N to 1000 FM-  
423 PM EDT Fri May 16 2025

.TONIGHT...SW winds 15 to 25 kt. Seas 4 to 7 ft.

.SAT...W to SW winds 15 to 25 kt. Seas 5 to 8 ft.

.SAT NIGHT...SW winds 15 to 25 kt, becoming W. Seas 5 to 8 ft.  
Slight chance of showers and tstms.

.SUN...W winds 10 to 20 kt, diminishing to 5 to 15 kt. Seas 4 to 7 ft.

.SUN NIGHT...W to SW winds 10 to 20 kt. Seas 3 to 5 ft.

.MON...W winds 5 to 15 kt, becoming variable. Seas 3 to 5 ft.

.MON NIGHT...SW winds 5 to 10 kt, becoming 5 to 15 kt. Seas 3 to 4 ft.

.TUE...W to SW winds 5 to 15 kt. Seas 3 to 4 ft.

.TUE NIGHT...S to SW winds 10 to 20 kt. Seas 3 to 5 ft.

.WED...SW winds 15 to 25 kt. Seas 3 to 6 ft.

.WED NIGHT...W to SW winds 15 to 25 kt. Seas 4 to 8 ft.

ANZ935-170830-

Cape Fear to 31N east of 1000 FM to 250 NM offshore-  
423 PM EDT Fri May 16 2025

.TONIGHT...SW winds 10 to 15 kt, becoming 10 to 20 kt. Seas 4 to 6 ft.

.SAT...SW winds 15 to 25 kt. Seas 4 to 7 ft.

.SAT NIGHT...W to SW winds 15 to 25 kt. Seas 5 to 8 ft.

.SUN...W to SW winds 10 to 20 kt. Seas 4 to 7 ft.

.SUN NIGHT...W winds 10 to 20 kt. Seas 3 to 5 ft.

.MON...W winds 5 to 15 kt, diminishing to less than 10 kt. Seas 3 to 5 ft.

.MON NIGHT...W winds 5 to 15 kt. Seas 3 to 4 ft.

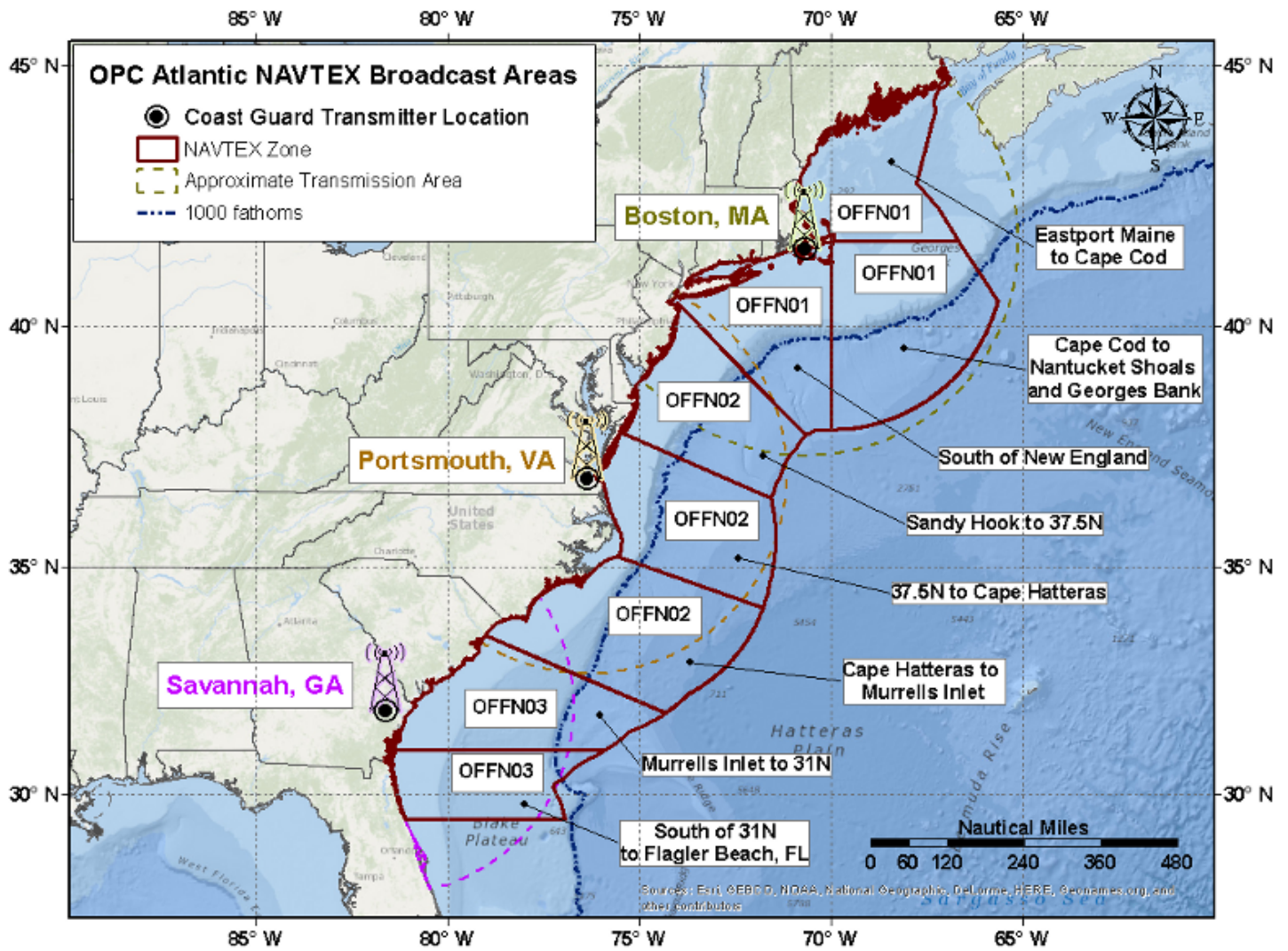
.TUE...W winds less than 10 kt, becoming SW. Seas 3 to 4 ft.

.TUE NIGHT...SW winds 10 to 15 kt, becoming 10 to 20 kt. Seas 4 to 5 ft.

.WED...SW winds 15 to 25 kt. Seas 4 to 6 ft.

.WED NIGHT...SW winds 15 to 25 kt. Seas 4 to 7 ft.

# NAVTEX MARINE FORECAST: ZONE MAP



KWNM 162039

OFFN01

NAVTEX Marine Forecast for NE US waters  
NWS Ocean Prediction Center Washington DC  
439 PM EDT Fri May 16 2025

Conditions given represent the highest within that period.

Locally higher winds and seas can be expected in and near tstms.

...Please refer to Coastal Waters Forecasts (CWF) available through NOAA Weather Radio and other means for detailed coastal waters forecasts...

.SYNOPSIS...A stationary front will continue S of the waters tonight, then lift NE over the area as a warm front Sat into Sat night. Low pressure will move offshore over the Gulf of Maine Sat night into Sun while pulling a cold front across the region. The low will then drift off to the E Sun night into Mon. A series of secondary cold fronts or low pressure troughs will move SE across the area Sun night into Tue. A weak high pressure ridge will build E over the region Tue night and Wed, then shift E of the area Wed night as a warm front approaches from the SW.

Eastport Maine to Cape Cod

.TONIGHT...S winds 5 to 15 kt. Seas 3 to 5 ft. Areas of fog with vsby 1 nm or less.

.SAT...SE winds 10 to 20 kt. Seas 3 to 4 ft. Chance of showers and areas of fog with vsby 1 nm or less.

.SAT NIGHT...S to SW winds 10 to 20 kt. Seas 3 to 5 ft. Scattered showers, tstms and patchy fog with vsby 1 nm or less.

.SUN...SW winds 10 to 20 kt. Seas 3 to 5 ft. Scattered showers and tstms with vsby 1 nm or less.

.SUN NIGHT...W to NW winds 10 to 20 kt. Seas 4 to 6 ft.

.MON...NW winds 10 to 20 kt. Seas 4 to 6 ft.

.MON NIGHT...N to NW winds 10 to 20 kt. Seas 4 to 6 ft.

.TUE...N to NE winds 10 to 20 kt. Seas 4 to 6 ft.

.TUE NIGHT...NE winds 10 to 20 kt. Seas 5 to 7 ft.

.WED...E winds 10 to 20 kt. Seas 5 to 8 ft.

.WED NIGHT...E winds 15 to 25 kt. Seas 5 to 8 ft.

Cape Cod to Nantucket Shoals and Georges Bank

.TONIGHT...S winds 5 to 15 kt. Seas 4 to 7 ft. Areas of fog early. Scattered showers and tstms. Vsby 1 NM or less.

.SAT...S to SW winds 10 to 20 kt. Seas 3 to 6 ft. Chance of showers, fog and tstms with vsby 1 nm or less.

.SAT NIGHT...SW winds 15 to 25 kt. Seas 5 to 8 ft. Chance of



showers and tstms with vsby 1 nm or less.

.SUN...W winds 15 to 25 kt. Seas 5 to 9 ft. Scattered showers and tstms with vsby 1 nm or less.

.SUN NIGHT...W winds 20 to 30 kt. Seas 6 to 10 ft.

.MON...W winds 20 to 30 kt. Seas 8 to 11 ft.

.MON NIGHT...NW winds 20 to 30 kt. Seas 8 to 12 ft.

.TUE...N to NW winds 15 to 25 kt. Seas 6 to 9 ft.

.TUE NIGHT...NE winds 10 to 20 kt. Seas 5 to 8 ft.

.WED...E to NE winds 10 to 20 kt. Seas 6 to 9 ft.

.WED NIGHT...E to SE winds 15 to 25 kt. Seas 6 to 9 ft.

#### South of New England

.TONIGHT...S winds 5 to 15 kt. Seas 3 to 5 ft. Areas of fog early. Scattered tstms and chance of showers. Vsby 1 NM or less.

.SAT...SW winds 10 to 20 kt. Seas 3 to 6 ft. Chance of showers and slight chance of tstms with vsby 1 nm or less.

.SAT NIGHT...W winds 10 to 20 kt. Seas 5 to 7 ft. Chance of showers and tstms with vsby 1 nm or less.

.SUN...W winds 15 to 25 kt. Seas 5 to 7 ft.

.SUN NIGHT...NW winds 20 to 30 kt. Seas 5 to 8 ft.

.MON...W winds 20 to 30 kt. Seas 6 to 9 ft.

.MON NIGHT...NW winds 10 to 20 kt. Seas 5 to 8 ft.

.TUE...N to NW winds 10 to 20 kt. Seas 3 to 6 ft.

.TUE NIGHT...NE winds 5 to 15 kt. Seas 3 to 5 ft.

.WED...E winds 10 to 20 kt. Seas 3 to 6 ft.

.WED NIGHT...E to SE winds 20 to 30 kt. Seas 5 to 9 ft.

KWNM 162038

OFFN02

NAVTEX Marine Forecast for Mid-Atlantic states waters  
NWS Ocean Prediction Center Washington DC  
438 PM EDT Fri May 16 2025

Conditions given represent the highest within that period.

Locally higher winds and seas can be expected in and near tstms.

...Please refer to Coastal Waters Forecasts (CWF) available through NOAA Weather Radio and other means for detailed coastal waters forecasts...

.SYNOPSIS...A stationary front over the central and N waters this evening will lift N of the area as a warm front tonight into Sat. Mariners should use caution for locally gusty winds and rough seas in and near locally heavy tstms. A cold front will approach from the W Sat, and then move E and SE over the waters Sat night into Sun. Broad low pressure will drift E and pass N and then NE of the area Sun night into Tue as a series of secondary cold fronts or low pressure troughs move E and SE over the region. A weak high pressure ridge will build S over the waters later Tue and Tue night as a warm front extend E off the SE coast. The warm front will lift N across the area Wed and Wed night as an associated cold front approaches from the W.

Sandy Hook to 37.5N

.TONIGHT...SW winds 5 to 15 kt. Seas 4 to 6 ft. Scattered showers and tstms with vsby 1 nm or less.  
.SAT...SW winds 15 to 25 kt. Seas 4 to 8 ft. Chance of showers and slight chance of tstms with vsby 1 nm or less.  
.SAT NIGHT...W winds 15 to 25 kt. Seas 6 to 9 ft. Chance of showers and tstms with vsby 1 nm or less.  
.SUN...W winds 15 to 25 kt. Seas 5 to 8 ft.  
.SUN NIGHT...NW winds 20 to 30 kt. Seas 5 to 9 ft.  
.MON...W winds 20 to 30 kt. Seas 7 to 10 ft.  
.MON NIGHT...N winds 15 to 25 kt. Seas 5 to 8 ft.  
.TUE...N winds 10 to 20 kt. Seas 4 to 6 ft.  
.TUE NIGHT...E to NE winds 5 to 15 kt. Seas 3 to 5 ft.  
.WED...E winds 15 to 25 kt. Seas 3 to 6 ft.  
.WED NIGHT...S winds 20 to 30 kt. Seas 5 to 9 ft.

37.5N to Cape Hatteras

.TONIGHT...SW winds 10 to 20 kt. Seas 4 to 6 ft. Scattered showers and tstms with vsby 1 nm or less.  
.SAT...SW winds 20 to 30 kt. Seas 5 to 9 ft. Chance of showers

and slight chance of tstms with vsby 1 nm or less.  
.SAT NIGHT...W winds 20 to 30 kt. Seas 6 to 9 ft. Chance of showers and tstms.  
.SUN...W winds 15 to 25 kt. Seas 5 to 8 ft.  
.SUN NIGHT...NW winds 15 to 25 kt. Seas 5 to 8 ft.  
.MON...W to NW winds 15 to 25 kt. Seas 5 to 8 ft.  
.MON NIGHT...W to NW winds 15 to 25 kt. Seas 4 to 7 ft.  
.TUE...N to NE winds 5 to 15 kt. Seas 3 to 5 ft.  
.TUE NIGHT...E winds 10 to 20 kt. Seas 3 to 5 ft.  
.WED...SE winds 15 to 25 kt. Seas 4 to 6 ft.  
.WED NIGHT...SW winds 20 to 30 kt. Seas 5 to 9 ft.

#### Cape Hatteras to Murrells Inlet

.TONIGHT...SW winds 15 to 25 kt. Seas 4 to 7 ft. Slight chance of showers and tstms with vsby 1 nm or less.  
.SAT...SW winds 20 to 30 kt. Seas 4 to 8 ft.  
.SAT NIGHT...W winds 20 to 30 kt. Seas 6 to 9 ft. Slight chance of showers and tstms.  
.SUN...W winds 15 to 25 kt. Seas 5 to 8 ft.  
.SUN NIGHT...W winds 15 to 25 kt. Seas 4 to 7 ft.  
.MON...Variable winds 5 to 15 kt. Seas 4 to 6 ft.  
.MON NIGHT...W winds 5 to 15 kt. Seas 3 to 5 ft.  
.TUE...N to NE winds 5 to 15 kt. Seas 3 to 5 ft.  
.TUE NIGHT...SW winds 10 to 20 kt. Seas 3 to 5 ft.  
.WED...SW winds 15 to 25 kt. Seas 4 to 7 ft.  
.WED NIGHT...SW winds 15 to 25 kt. Seas 5 to 8 ft.

KWNM 162038

OFFN03

NAVTEX Marine Forecast for southeast U.S. waters

NWS Ocean Prediction Center Washington DC

438 PM EDT Fri May 16 2025

Conditions given represent the highest within that period.

Locally higher winds and seas can be expected in and near tstms.

...Please refer to Coastal Waters Forecasts (CWF) available through NOAA Weather Radio and other means for detailed coastal waters forecasts...

.SYNOPSIS...A high pressure ridge will build W over the waters tonight into Sat night, then weaken Sun as a cold front approaches from the NW. The cold front will move SE into the northern portions Sun, then pass E of the area Sun night. A weak cold front or low pressure trough will move S over the area Mon and Mon night. Another weak cold front will approach the waters Tue, stall just N of the area Tue night, then return back N of the region as a warm front Wed and Wed night as a cold front approaches from the NW.

Murrells Inlet to 31N

.TONIGHT...SW winds 10 to 20 kt. Seas 4 to 6 ft.  
.SAT...SW winds 15 to 25 kt. Seas 4 to 7 ft.  
.SAT NIGHT...W winds 15 to 25 kt. Seas 5 to 8 ft.  
.SUN...W winds 10 to 20 kt. Seas 4 to 7 ft.  
.SUN NIGHT...W winds 5 to 15 kt. Seas 3 to 5 ft.  
.MON...W winds 5 to 15 kt. Seas 3 to 4 ft.  
.MON NIGHT...SW winds 5 to 15 kt. Seas 3 to 4 ft.  
.TUE...SW winds 5 to 15 kt. Seas 3 to 4 ft.  
.TUE NIGHT...SW winds 10 to 20 kt. Seas 3 to 5 ft.  
.WED...SW winds 15 to 25 kt. Seas 4 to 6 ft.  
.WED NIGHT...W to SW winds 15 to 25 kt. Seas 4 to 7 ft.

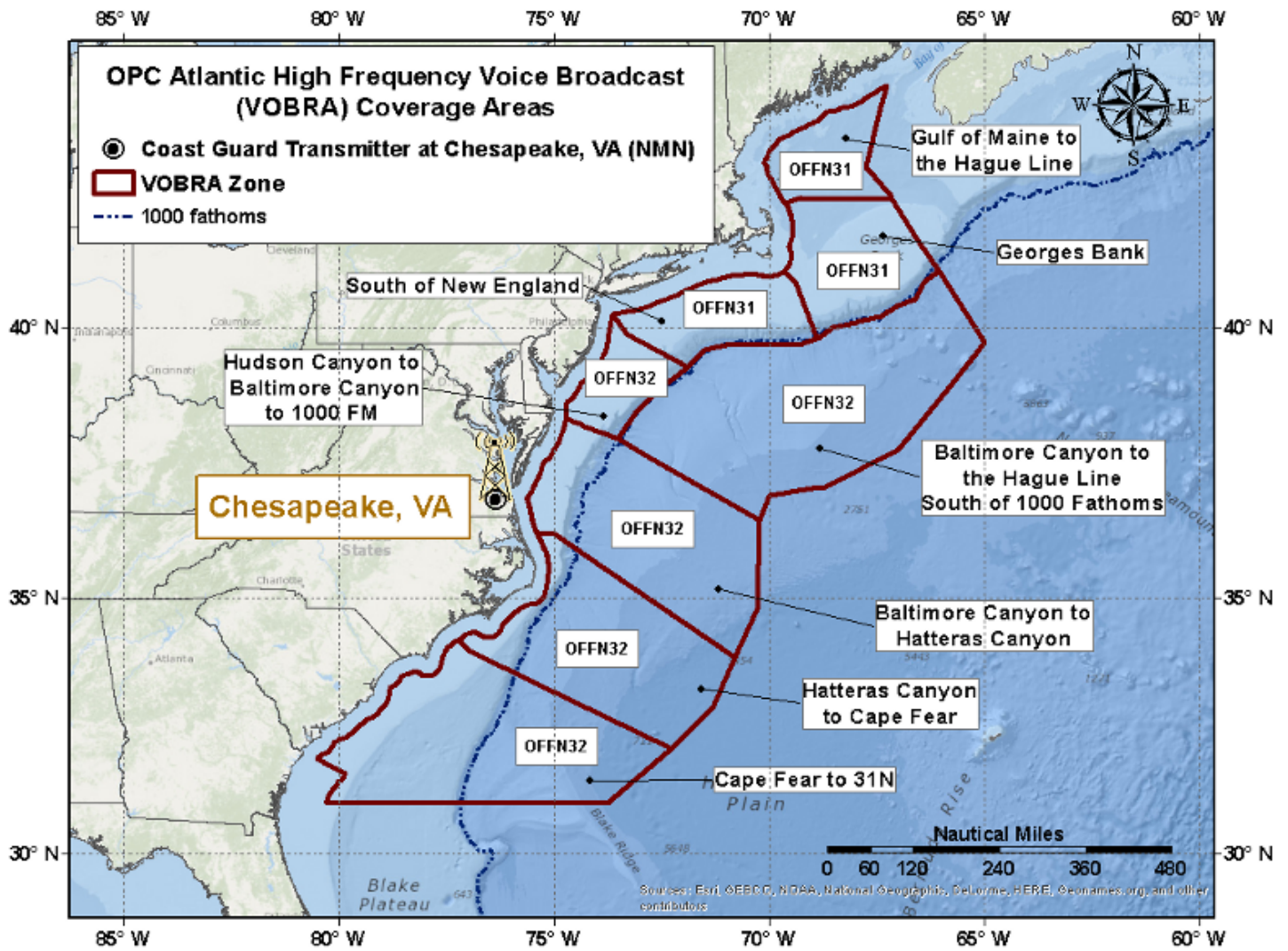
South of 31N

.TONIGHT...SW winds 5 to 15 kt. Seas 3 to 5 ft.  
.SAT...SW winds 5 to 15 kt. Seas 3 to 5 ft.  
.SAT NIGHT...W to SW winds 5 to 15 kt. Seas 3 to 5 ft.  
.SUN...W winds 5 to 15 kt. Seas 3 to 5 ft.  
.SUN NIGHT...W to SW winds 5 to 15 kt. Seas 3 to 4 ft.  
.MON...W winds less than 10 kt. Seas 3 to 4 ft.  
.MON NIGHT...SW winds 5 to 15 kt. Seas 3 to 4 ft.  
.TUE...SW winds 5 to 15 kt. Seas 3 to 4 ft.  
.TUE NIGHT...SW winds 10 to 20 kt. Seas 3 to 4 ft.

.WED...SW winds 10 to 20 kt. Seas 3 to 6 ft.

.WED NIGHT...W to SW winds 10 to 20 kt. Seas 4 to 7 ft.

# MARINE WEATHER HF VOICE BROADCAST: ZONE MAP



KWBC 162024

OFFN31

Marine Weather HF Voice Broadcast  
NWS Ocean Prediction Center Washington DC  
424 PM EDT Fri May 16 2025

New England continental shelf and slope waters from 25 nm offshore to the Hague Line, except to 1000 fm south of New England.

Conditions given represent the highest within that period.

Seas given as significant wave height, which is the average height of the highest 1/3 of the waves. Individual waves may be more than twice the significant wave height.

Locally higher winds and seas can be expected in and near tstms.

.SYNOPSIS FOR NEW ENGLAND WATERS...A stationary front will continue S of the waters tonight, then lift NE over the area as a warm front Sat into Sat night. Low pressure will move offshore over the Gulf of Maine Sat night into Sun while pulling a cold front across the region. The low will then drift off to the E Sun night into Mon. A series of secondary cold fronts or low pressure troughs will move SE across the area Sun night into Tue. A weak high pressure ridge will build E over the region Tue night and Wed, then shift E of the area Wed night as a warm front approaches from the SW.

Gulf of Maine to the Hague Line

.TONIGHT...S winds 5 to 10 kt, becoming 5 to 15 kt. Seas 3 to 4 ft. Areas of fog. Chance of showers. Vsby 1 NM or less.

.SAT...S winds 10 to 15 kt, becoming SE 10 to 20 kt. Seas 3 to 4 ft. Chance of showers and areas of fog with vsby 1 nm or less.

.SAT NIGHT...S winds 10 to 20 kt, becoming S to SW 5 to 15 kt. Seas 3 to 5 ft. Scattered showers and tstms with vsby 1 nm or less.

.SUN...W winds 10 to 15 kt, becoming SW. Seas 3 to 5 ft. Scattered showers and tstms with vsby 1 nm or less.

.SUN NIGHT...W to SW winds 10 to 20 kt, becoming W to NW. Seas 3 to 6 ft.

.MON...NW winds 10 to 20 kt. Seas 3 to 6 ft.

.MON NIGHT...N to NW winds 10 to 20 kt. Seas 3 to 6 ft.

.TUE...N winds 15 to 20 kt, becoming NE 10 to 20 kt. Seas 3 to 6 ft.

.TUE NIGHT...NE winds 10 to 20 kt. Seas 3 to 6 ft.

.WED...NE winds 10 to 15 kt, becoming E 10 to 20 kt. Seas 4 to 7 ft.

.WED NIGHT...E winds 15 to 25 kt. Seas 4 to 8 ft.

Georges Bank...from the Northeast Channel to the Great South Channel including waters east of Cape Cod...to the Hague Line

.TONIGHT...S to SW winds less than 10 kt. Seas 3 to 5 ft. Areas of fog. Chance of showers and isolated tstms. Vsby 1 NM or less.

.SAT...S to SE winds 5 to 15 kt, increasing to 10 to 20 kt. Seas 3 to 4 ft. Chance of showers, fog and tstms with vsby 1 nm or less.

.SAT NIGHT...S winds 10 to 20 kt, becoming SW 10 to 15 kt. Seas 3 to 5 ft. Scattered tstms and chance of showers with vsby 1 nm or less.

.SUN...W to SW winds 10 to 20 kt. Seas 3 to 6 ft. Scattered showers and tstms with vsby 1 nm or less.

.SUN NIGHT...W to SW winds 10 to 20 kt. Seas 4 to 7 ft.

.MON...W to NW winds 15 to 25 kt. Seas 4 to 7 ft.

.MON NIGHT...NW winds 10 to 20 kt. Seas 4 to 8 ft.

.TUE...N to NW winds 10 to 20 kt. Seas 4 to 6 ft.

.TUE NIGHT...NE winds 10 to 20 kt. Seas 4 to 8 ft.

.WED...NE winds 10 to 20 kt, becoming E 15 to 20 kt. Seas 5 to 9 ft.

.WED NIGHT...E winds 15 to 25 kt. Seas 6 to 8 ft.

South of New England...from the Great South Channel to Hudson Canyon including the waters south of Marthas Vineyard and Nantucket Island...out to 1000 fm

.TONIGHT...S to SW winds 5 to 15 kt, becoming S 5 to 10 kt, then, becoming 5 to 15 kt. Seas 3 to 5 ft. Areas of fog early. Chance of showers and tstms. Vsby 1 NM or less.

.SAT...S to SW winds 10 to 20 kt. Seas 3 to 5 ft. Chance of showers and slight chance of tstms with vsby 1 nm or less.

.SAT NIGHT...SW winds 10 to 20 kt, becoming W 15 to 20 kt. Seas 4 to 6 ft. Chance of showers and tstms with vsby 1 nm or less.

.SUN...W winds 15 to 20 kt. Seas 4 to 6 ft.

.SUN NIGHT...W to NW winds 15 to 25 kt. Seas 4 to 7 ft.

.MON...NW winds 15 to 25 kt, becoming W. Seas 4 to 8 ft.

.MON NIGHT...NW winds 10 to 20 kt. Seas 4 to 7 ft.

.TUE...NW winds 10 to 15 kt, becoming N 5 to 15 kt. Seas 3 to 6 ft.

.TUE NIGHT...NE winds 5 to 15 kt. Seas 3 to 5 ft.

.WED...E winds 10 to 20 kt. Seas 4 to 7 ft.

.WED NIGHT...E to SE winds 20 to 30 kt. Seas 5 to 9 ft.



KWBC 162025

OFFN32

Marine Weather HF Voice Broadcast  
NWS Ocean Prediction Center Washington DC  
425 PM EDT Fri May 16 2025

West central North Atlantic continental shelf and slope waters beyond 20 nm to 250 nm offshore, including south of Georges Bank from 1000 fm to 250 nm offshore.

Conditions given represent the highest within that period.

Seas given as significant wave height, which is the average height of the highest 1/3 of the waves. Individual waves may be more than twice the significant wave height.

Locally higher winds and seas can be expected in and near tstms.

.SYNOPSIS FOR MID ATLC WATERS...A stationary front over the central and N waters this evening will lift N of the area as a warm front tonight into Sat. Mariners should use caution for locally gusty winds and rough seas in and near locally heavy tstms. A cold front will approach from the W Sat, and then move E and SE over the waters Sat night into Sun. Broad low pressure will drift E and pass N and then NE of the area Sun night into Tue as a series of secondary cold fronts or low pressure troughs move E and SE over the region. A weak high pressure ridge will build S over the waters later Tue and Tue night as a warm front extend E off the SE coast. The warm front will lift N across the area Wed and Wed night as an associated cold front approaches from the W.

Hudson Canyon to Baltimore Canyon including the waters west of 39.3N 71.9W...SW to 37.7N 72.9W

.TONIGHT...S to SW winds 5 to 15 kt. Seas 3 to 4 ft. Scattered showers and tstms with vsby 1 nm or less.

.SAT...S to SW winds 10 to 20 kt. Seas 3 to 5 ft. Chance of showers and tstms with vsby 1 nm or less.

.SAT NIGHT...W to SW winds 10 to 20 kt. Seas 3 to 6 ft. Chance of showers and tstms.

.SUN...W winds 15 to 25 kt. Seas 3 to 6 ft.

.SUN NIGHT...W winds 15 to 20 kt, becoming NW 15 to 25 kt. Seas 4 to 7 ft.

.MON...NW winds 15 to 25 kt, becoming W 10 to 20 kt. Seas 4 to 7 ft.

.MON NIGHT...NW winds 10 to 20 kt, becoming N 15 to 20 kt. Seas 3 to 5 ft.

.TUE...N winds 5 to 15 kt. Seas 3 to 5 ft.

.TUE NIGHT...E to NE winds 5 to 10 kt, becoming E 10 to 15 kt.  
Seas 3 to 4 ft.

.WED...E winds 15 to 25 kt. Seas 3 to 5 ft.

.WED NIGHT...E winds 15 to 25 kt, becoming S to SE. Seas 5 to 9 ft.

Baltimore Canyon to the Hague Line south of 1000 fm

.TONIGHT...W winds 10 to 20 kt, becoming W to SW 5 to 15 kt, then, becoming S to SW 10 to 20 kt. Seas 4 to 8 ft. Scattered showers and tstms with vsby 1 nm or less.

.SAT...S to SW winds 15 to 25 kt. Seas 4 to 8 ft. Chance of showers, fog and tstms with vsby 1 nm or less.

.SAT NIGHT...W to SW winds 15 to 25 kt. Seas 6 to 10 ft. Chance of showers and tstms with vsby 1 nm or less.

.SUN...W winds 20 to 30 kt. Seas 5 to 9 ft. Scattered showers and tstms with vsby 1 nm or less.

.SUN NIGHT...W winds 20 to 30 kt. Seas 6 to 11 ft.

.MON...W to NW winds 20 to 30 kt. Seas 7 to 12 ft.

.MON NIGHT...W to NW winds 20 to 30 kt. Seas 7 to 12 ft.

.TUE...NW winds 15 to 25 kt. Seas 6 to 10 ft.

.TUE NIGHT...N to NE winds 10 to 20 kt. Seas 5 to 8 ft.

.WED...E to NE winds 10 to 20 kt. Seas 6 to 10 ft.

.WED NIGHT...E winds 15 to 25 kt, becoming SE 20 to 30 kt. Seas 6 to 10 ft.

Baltimore Canyon to Hatteras Canyon out to 36N 70W to 34N 71W

.TONIGHT...SW winds 10 to 20 kt. Seas 3 to 6 ft. Scattered showers and tstms with vsby 1 nm or less.

.SAT...SW winds 20 to 30 kt. Seas 5 to 9 ft. Chance of showers and slight chance of tstms with vsby 1 nm or less.

.SAT NIGHT...SW winds 20 to 30 kt, becoming W 15 to 25 kt. Seas 5 to 9 ft. Chance of showers and tstms.

.SUN...W to NW winds 15 to 25 kt. Seas 5 to 8 ft. Scattered showers and tstms.

.SUN NIGHT...W winds 15 to 25 kt, becoming NW 20 to 30 kt. Seas 5 to 8 ft.

.MON...NW winds 15 to 25 kt, becoming W. Seas 5 to 9 ft.

.MON NIGHT...W to NW winds 15 to 25 kt. Seas 5 to 9 ft.

.TUE...N winds 5 to 15 kt. Seas 3 to 6 ft.

.TUE NIGHT...N to NE winds 5 to 15 kt, becoming E to NE 10 to 20 kt. Seas 3 to 5 ft.

.WED...E winds 10 to 20 kt, becoming SE 15 to 25 kt. Seas 3 to 6 ft.

.WED NIGHT...SE winds 20 to 30 kt, becoming S 15 to 25 kt. Seas 5 to 9 ft.

Hatteras Canyon to Cape Fear out to 34N 71W to 32N 73W

.TONIGHT...SW winds 15 to 25 kt. Seas 4 to 7 ft. Slight chance of showers and tstms with vsby 1 nm or less.  
.SAT...SW winds 20 to 30 kt. Seas 5 to 9 ft.  
.SAT NIGHT...SW winds 20 to 30 kt, becoming W 15 to 25 kt. Seas 5 to 9 ft. Slight chance of showers and tstms.  
.SUN...W winds 15 to 25 kt. Seas 4 to 8 ft.  
.SUN NIGHT...W to NW winds 15 to 25 kt. Seas 4 to 7 ft.  
.MON...N to NW winds 10 to 20 kt, becoming NW 5 to 15 kt. Seas 3 to 6 ft.  
.MON NIGHT...W to NW winds 5 to 15 kt. Seas 3 to 6 ft.  
.TUE...N to NW winds 5 to 15 kt, becoming N to NE. Seas 3 to 5 ft.  
.TUE NIGHT...NE winds 5 to 15 kt, becoming E 10 to 20 kt. Seas 3 to 5 ft.  
.WED...SW winds 15 to 25 kt. Seas 4 to 7 ft.  
.WED NIGHT...SW winds 15 to 25 kt. Seas 4 to 8 ft.

Cape Fear to 31N out to 32N 73W to 31N 74W

.TONIGHT...SW winds 15 to 25 kt. Seas 4 to 7 ft.  
.SAT...SW winds 15 to 25 kt. Seas 5 to 8 ft.  
.SAT NIGHT...W to SW winds 15 to 25 kt. Seas 5 to 8 ft. Slight chance of showers and tstms.  
.SUN...W to SW winds 10 to 20 kt. Seas 4 to 7 ft.  
.SUN NIGHT...W to SW winds 10 to 20 kt. Seas 3 to 5 ft.  
.MON...W winds 5 to 15 kt, diminishing to less than 10 kt. Seas 3 to 5 ft.  
.MON NIGHT...W to SW winds 5 to 15 kt. Seas 3 to 4 ft.  
.TUE...W to SW winds 5 to 15 kt. Seas 3 to 4 ft.  
.TUE NIGHT...SW winds 10 to 20 kt. Seas 3 to 5 ft.  
.WED...SW winds 15 to 25 kt. Seas 3 to 6 ft.  
.WED NIGHT...SW winds 15 to 25 kt. Seas 4 to 8 ft.